

IF IT IS FOUND DESIRABLE TO CHANGE ANY TOLERANCE OR OTHER DETAIL SPECIFIED ON THIS DRAWING NOTIFY THE PURCHASER PROMPTLY.

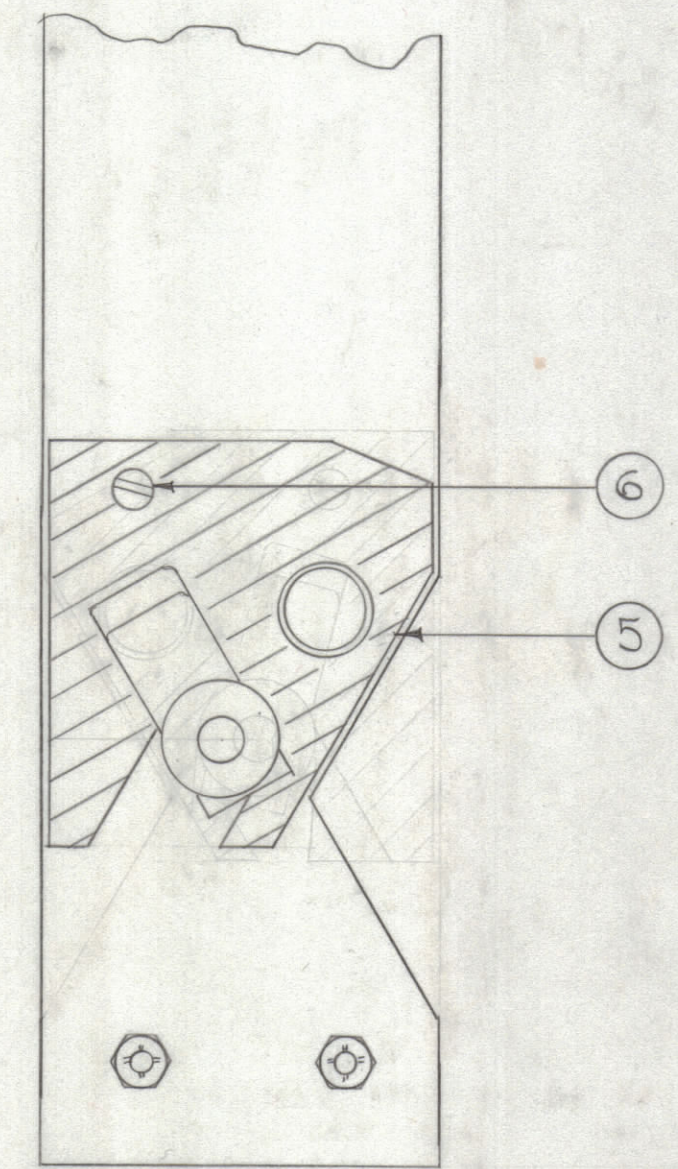
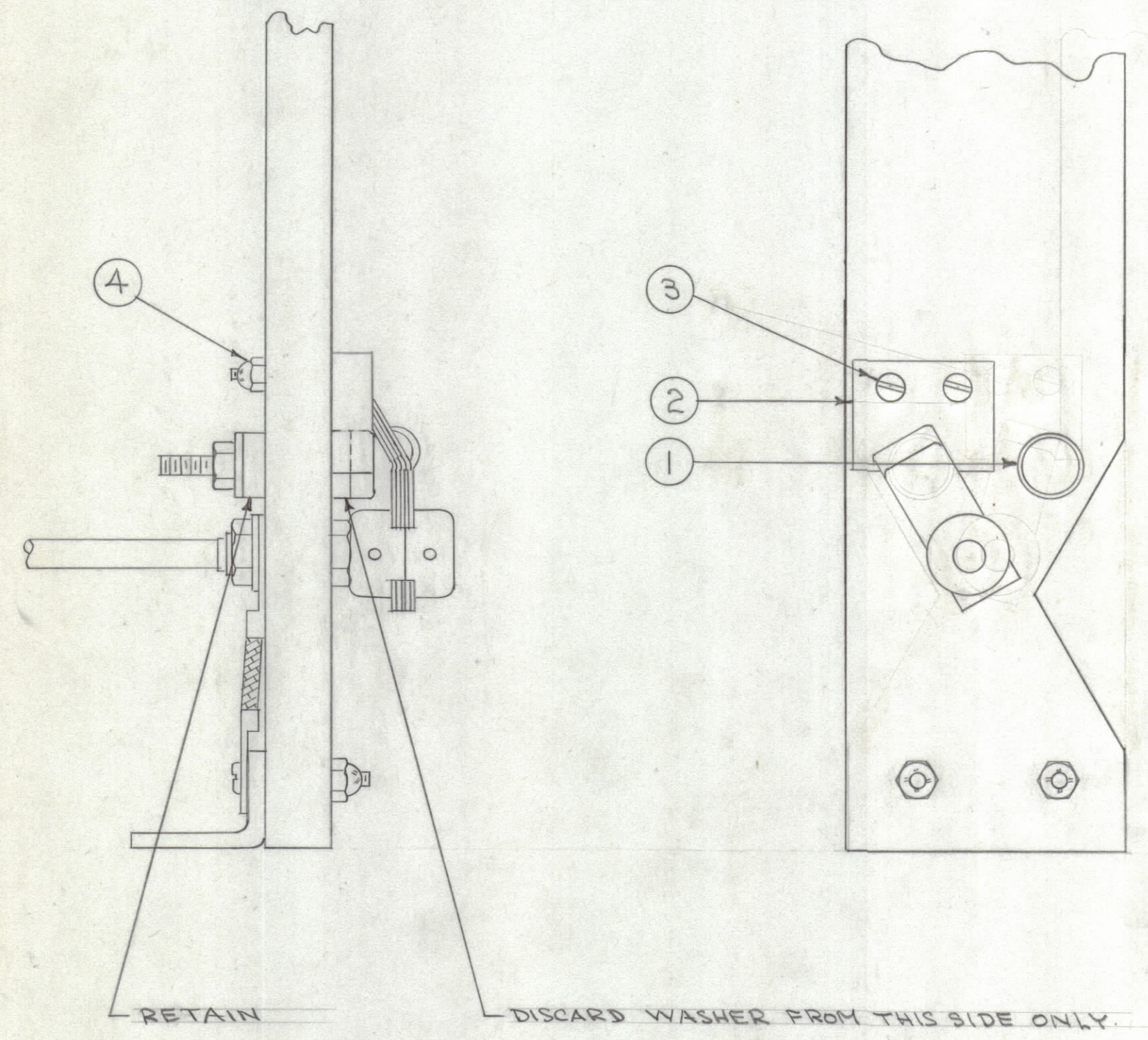
MAXIMUM ALLOWABLE TOLERANCES HAVE BEEN DETERMINED AND DEVIATIONS WILL BE CAUSE FOR REJECTION. REMOVE ALL BURRS AND SHARP EDGES

NOTICE TO PERSONS RECEIVING THIS DRAWING

THE TECHNICAL MATERIEL CORPORATION claims proprietary right in the material disclosed hereon. This drawing is issued in confidence for engineering information only and may not be reproduced or used to manufacture anything shown hereon without permission from THE TECHNICAL MATERIEL CORPORATION to the user. This drawing is loaned for mutual assistance and is subject to recall at any time.

Property of:
THE TECHNICAL MATERIEL CORPORATION
MAMARONECK, NEW YORK

- 1- REMOVE AND RETAIN SWITCH CONTACT (ITEM 1).
- 2- REMOVE AND DISCARD SWITCH REST (ITEM 2).
- 3- DISCARD FLAT HEAD SCREWS (ITEM 3)
- 4- RETAIN LOCK NUTS (ITEM 4).
- 5- REPLACE SWITCH REST (ITEM 2) WITH ITEM 5 (PX-247 SHADED AREA) FURNISHED.
- 6- REPLACE FLAT HEAD SCREWS (ITEM 3) WITH ITEM 6 FURNISHED.
- 7- REPLACE SWITCH CONTACT (ITEM 1) AND WASHER.



ID-134

ISSUE	ITEM	CHANGED FROM	DATE	CN. NO.	DRAFTS	CHECKER	ENG. APP.
TOLERANCES		SCALE:					
ALL OTHERS	DEC. DIM. ± FRAC. DIM. ± ANGULAR DIM. ±	DRILL, PUNCH, COMMERCIAL STOCK SIZES AND MANUFACTURERS TOLERANCES ARE NOT INCLUDED.					

MODEL	PROJECT NO.	ASS'Y. NO.	DATE
USED ON			

REQ. ITEM	PART NO.	DESCRIPTION	SYMBOL
THE TECHNICAL MATERIEL CORP. MAMARONECK, NEW YORK			
STOCK SIZE		SPACER PLATE INSTALLATION	
MATERIAL	WEIGHT PER PC.	ROTOR SWITCH TAC-1	
TYPE & TEMPER		CDD 8-4-54	AMP WDC
HEAT TREAT. SPEC.		DRAWN	ELEC. DES. APP. MECH. DES. APP.
FINISH & SPEC. NO.		CHECKED	FINAL APPROVAL
		ID-134	