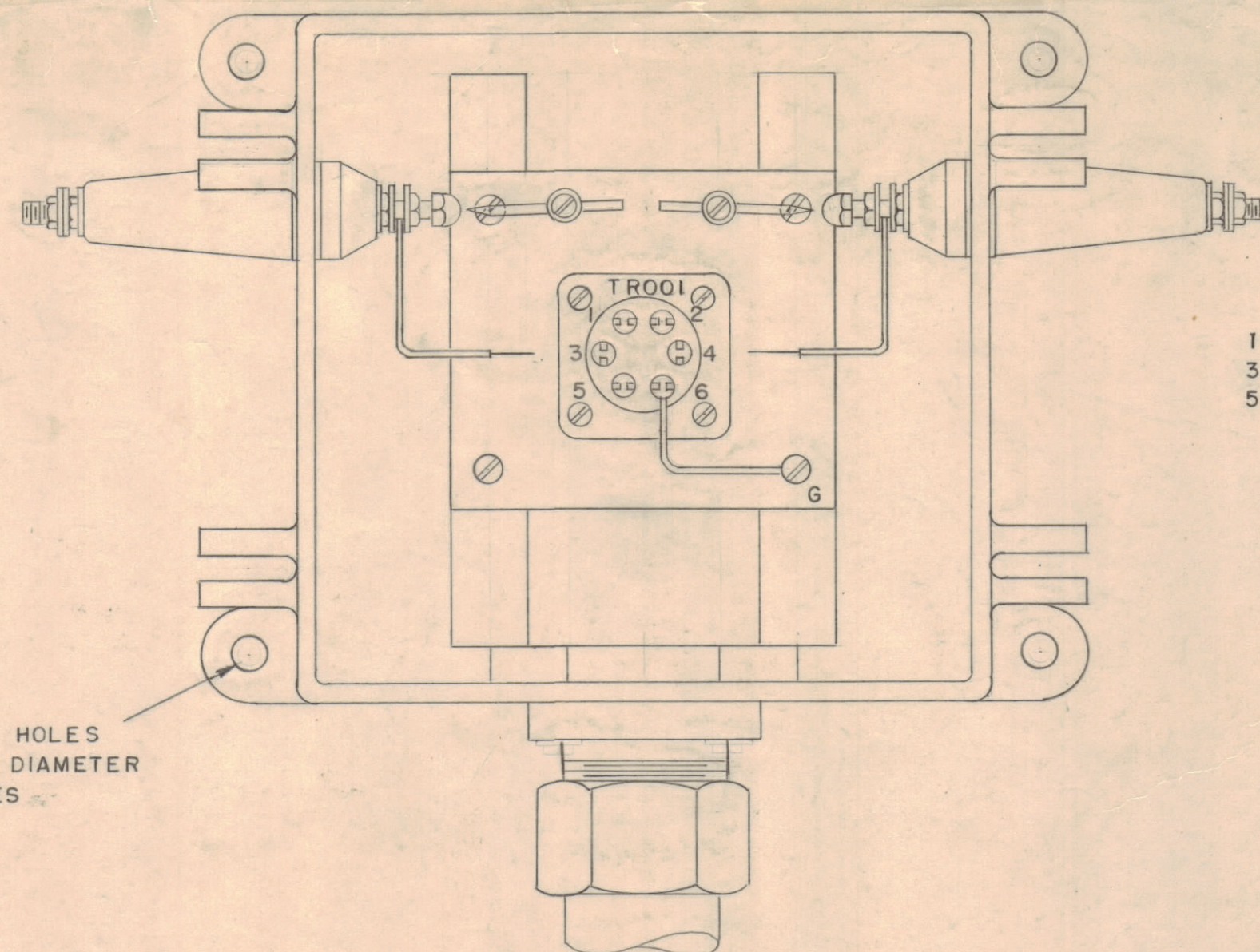
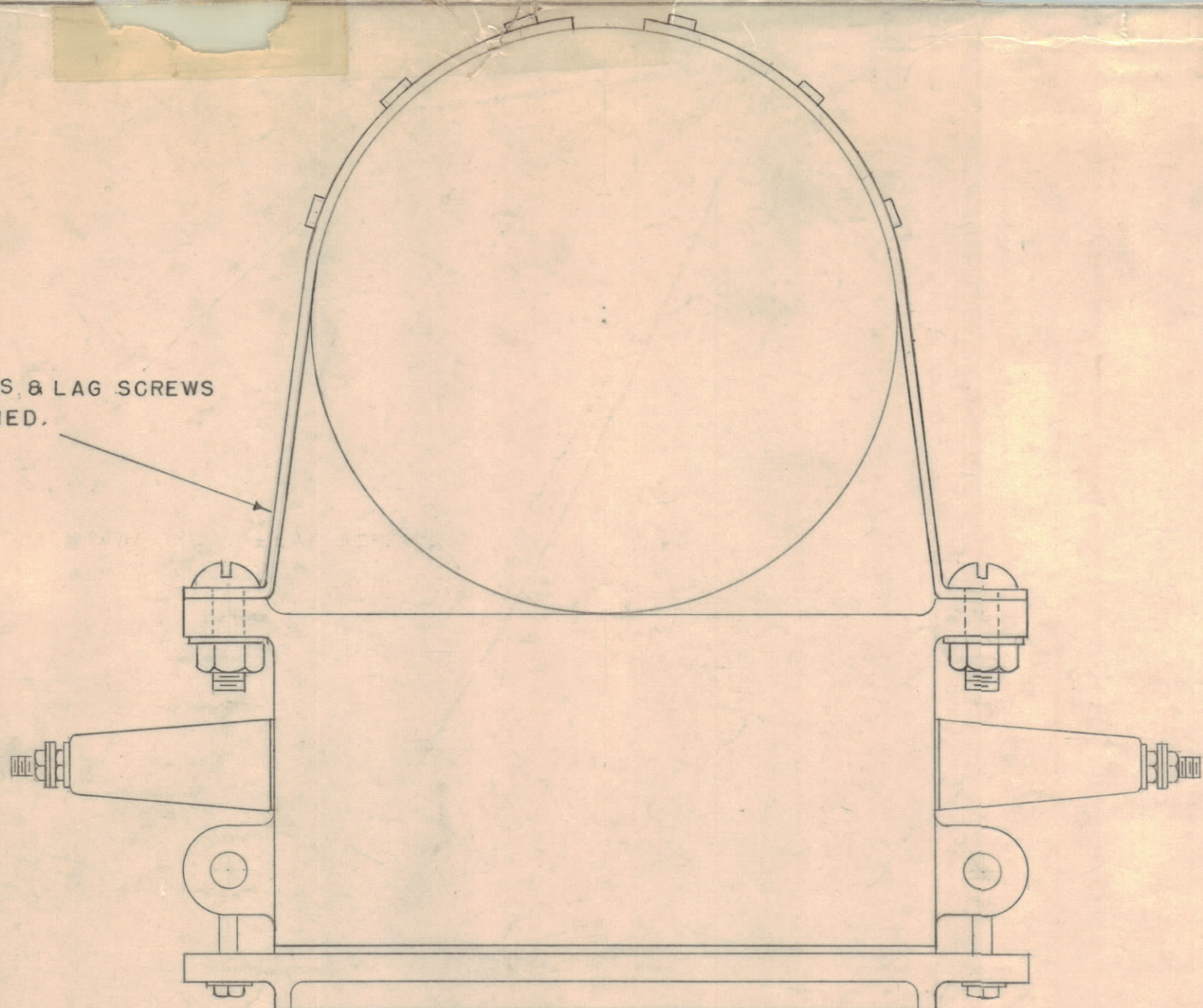


NOTE:

STRAP IRONS & LAG SCREWS
NOT SUPPLIED.

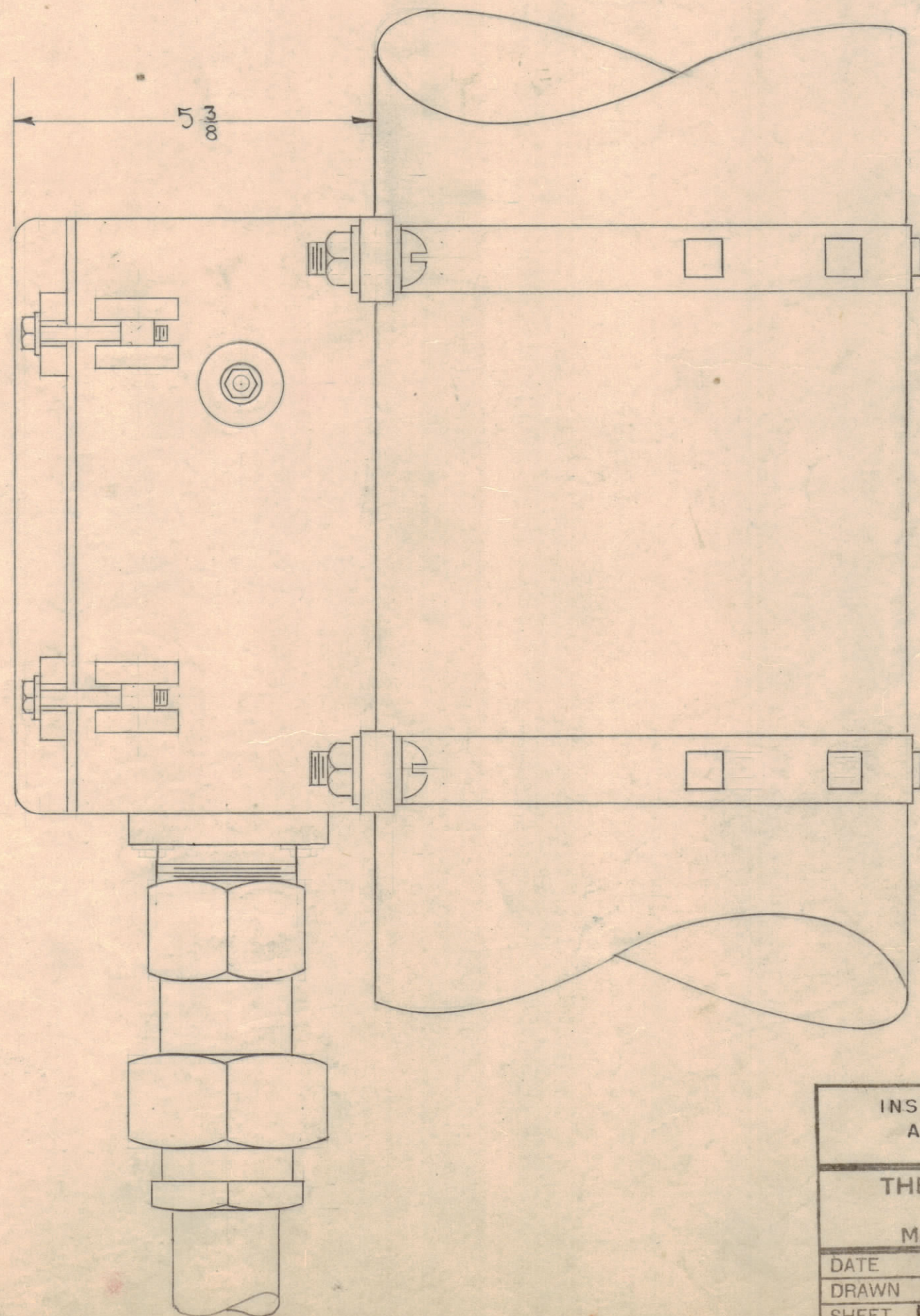
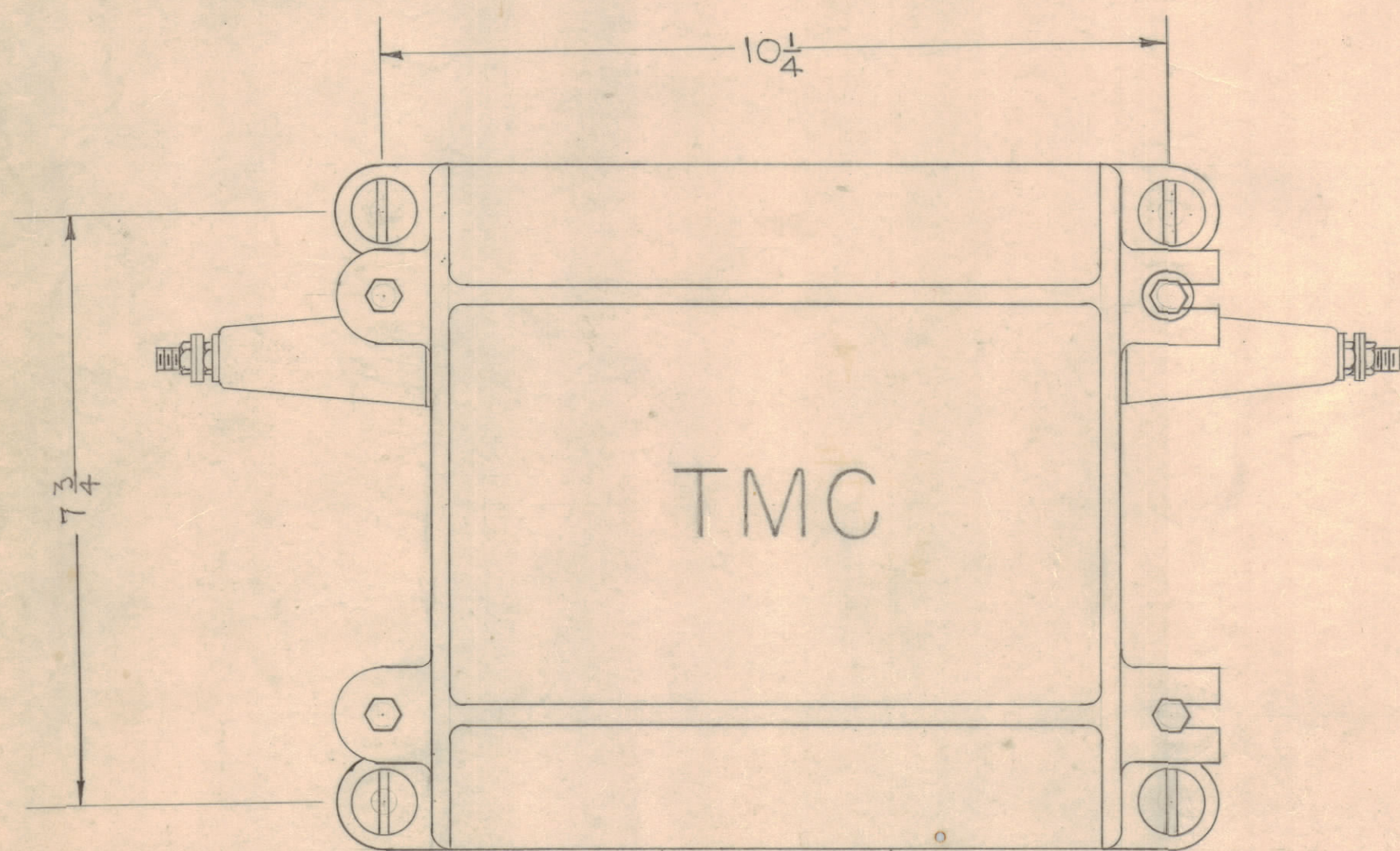


TROOI
TERMINALS

1-2	700 OHMS
3-4	200 OHMS
5-6	70 OHMS

ANCHOR HOLES
33/64 DIAMETER
4 HOLES

SUPERSEDED
DIRECTLY REPLACED BY ID297



NOTICE TO PERSONS RECEIVING THIS DRAWING

THE TECHNICAL MATERIEL CORPORATION claims proprietary right in the material disclosed herein. This drawing is issued in confidence for engineering information only and may not be reproduced or used to manufacture anything shown herein without permission from THE TECHNICAL MATERIEL CORPORATION to the user. This drawing is loaned for mutual assistance and is subject to recall at any time.

Property of:

THE TECHNICAL MATERIEL CORPORATION
MAMARONECK, NEW YORK

RG 85-U
JUTE & ARMOR
COVERED CABLE

NAVY TYPE 7
RW-49156, TMC PART NO ES-85/U
RG 85-U END SEAL
(NOT SUPPLIED)

ISSUE	ITEM	CHANGED FROM	DATE	NO.	DRAFT	CHK.	APP.
B	1	"SUPERSEDED" NOTE ADDED	79.64	11723			
A	1	TMC ES-85/U ADDED	10/7/51	1	000		

INSTALLATION DETAILS ANTENNA COUPLER MODEL RAC	
THE TECHNICAL MATERIEL CORPORATION MAMARONECK, NEW YORK	
DATE	10-5-51
CHKD.	NEO
DRAWN	JAF
APPD.	NEO
SHEET	1 OF 1
NOID	126 B

WAS CMM020 1/26/54