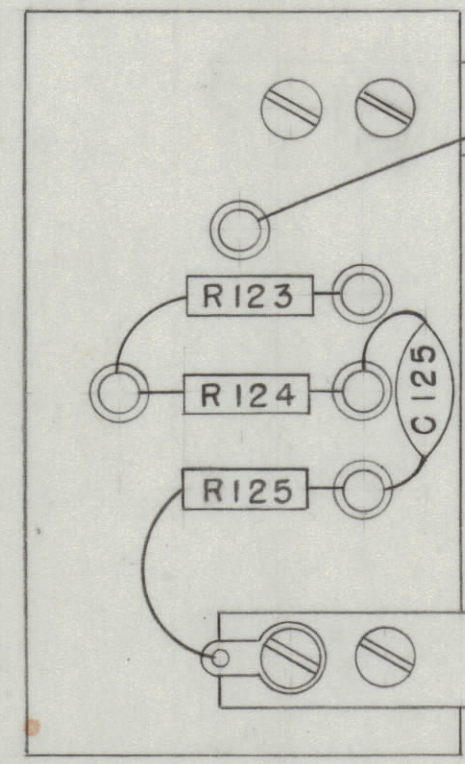
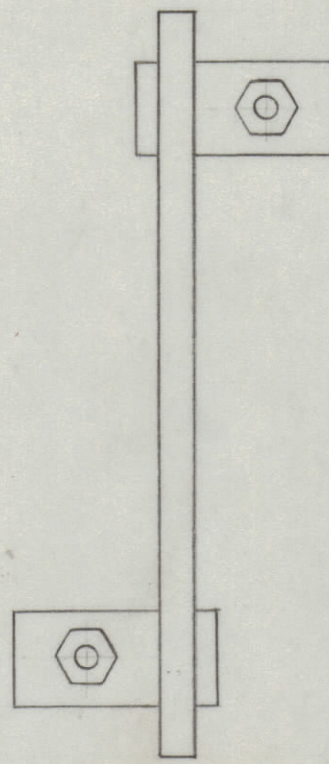
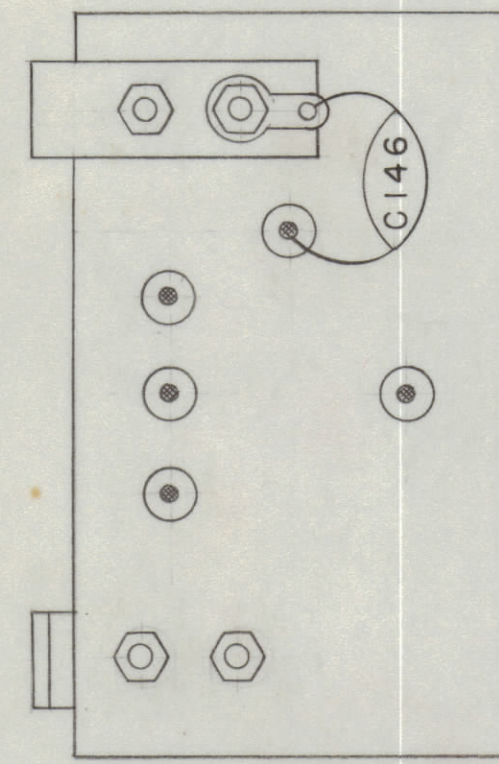
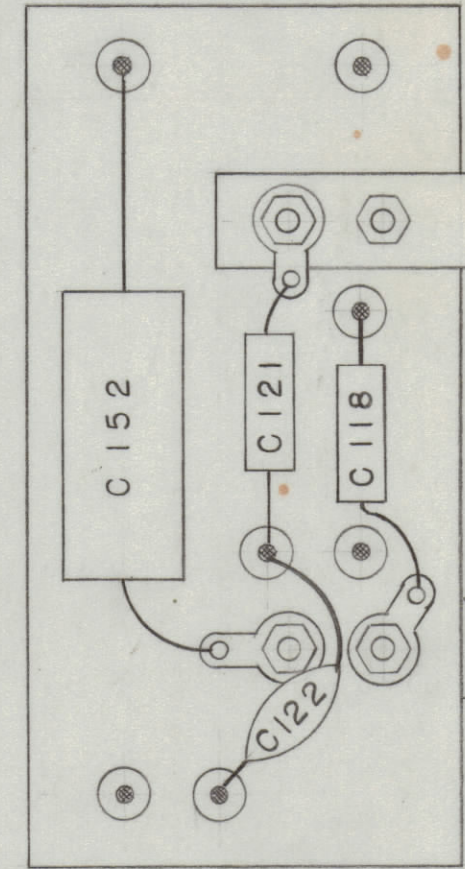
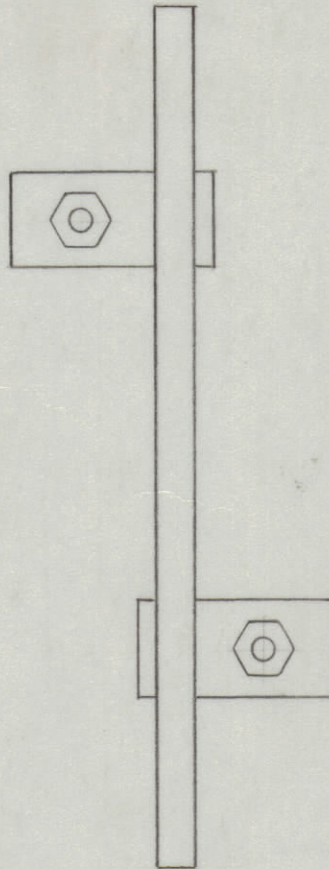
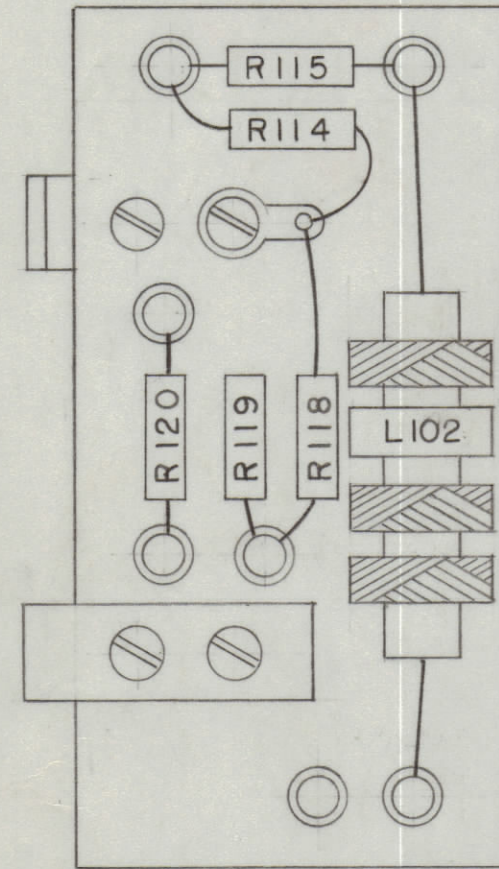


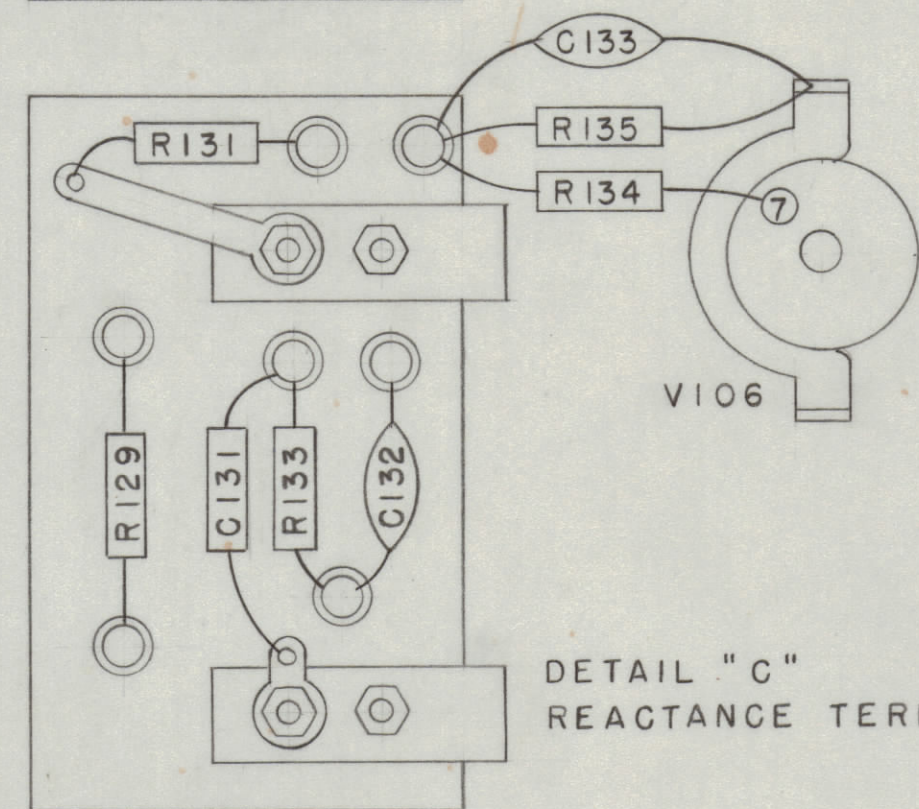
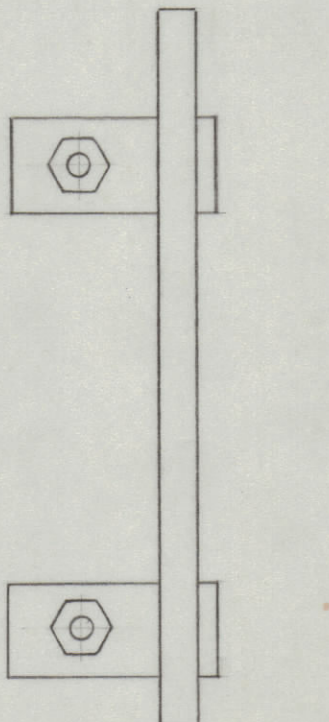
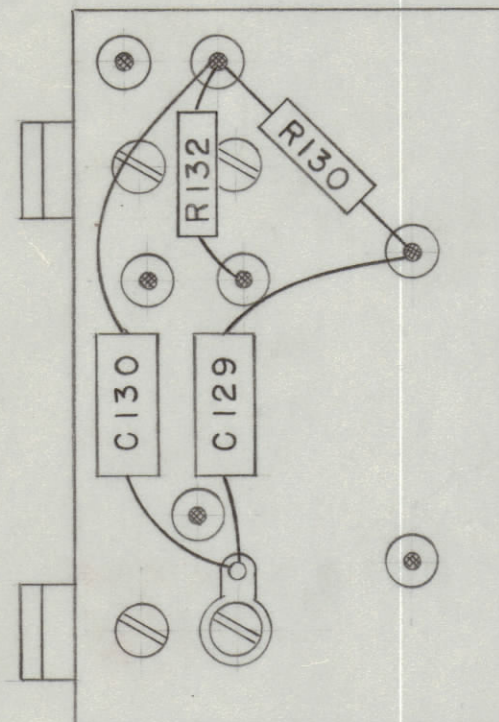
IF IT IS FOUND DESIRABLE TO CHANGE ANY TOLERANCE OR OTHER DETAIL SPECIFIED ON THIS DRAWING NOTIFY THE PURCHASER PROMPTLY.
 MAXIMUM ALLOWABLE TOLERANCES HAVE BEEN DETERMINED AND DEVIATIONS WILL BE CAUSE FOR REJECTION. REMOVE ALL BURRS AND SHARP EDGES.



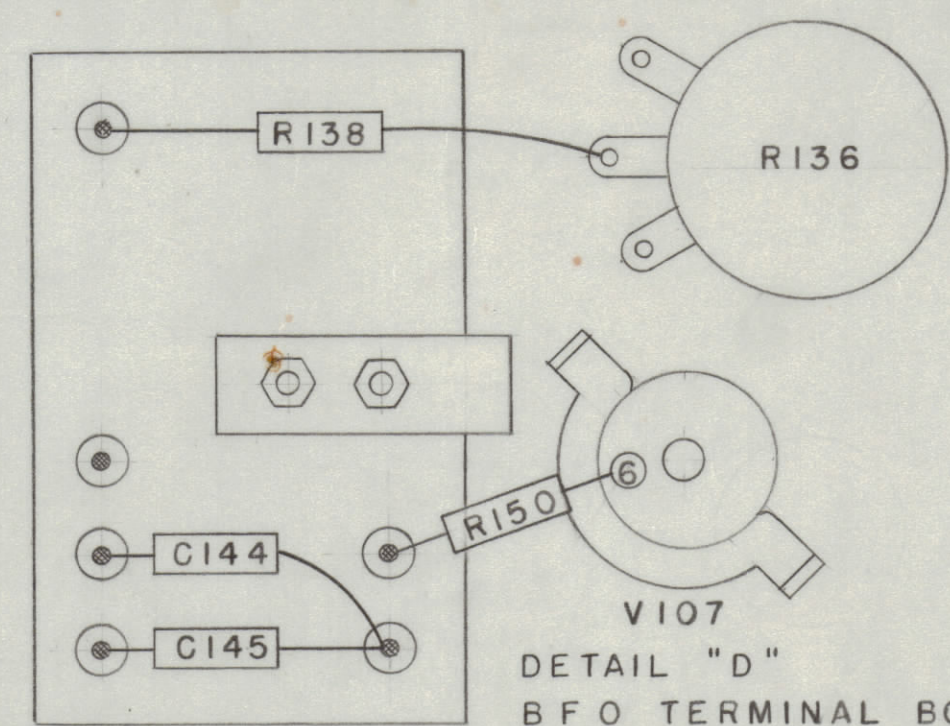
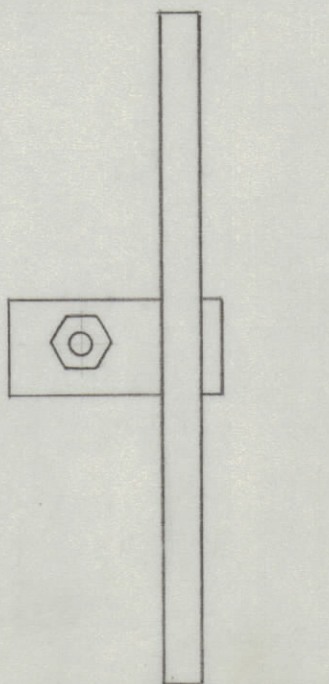
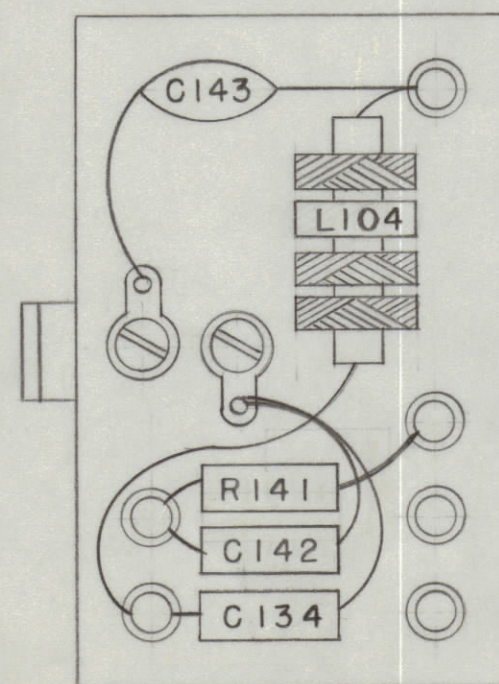
DETAIL "A"
AUDIO TERMINAL BOARD



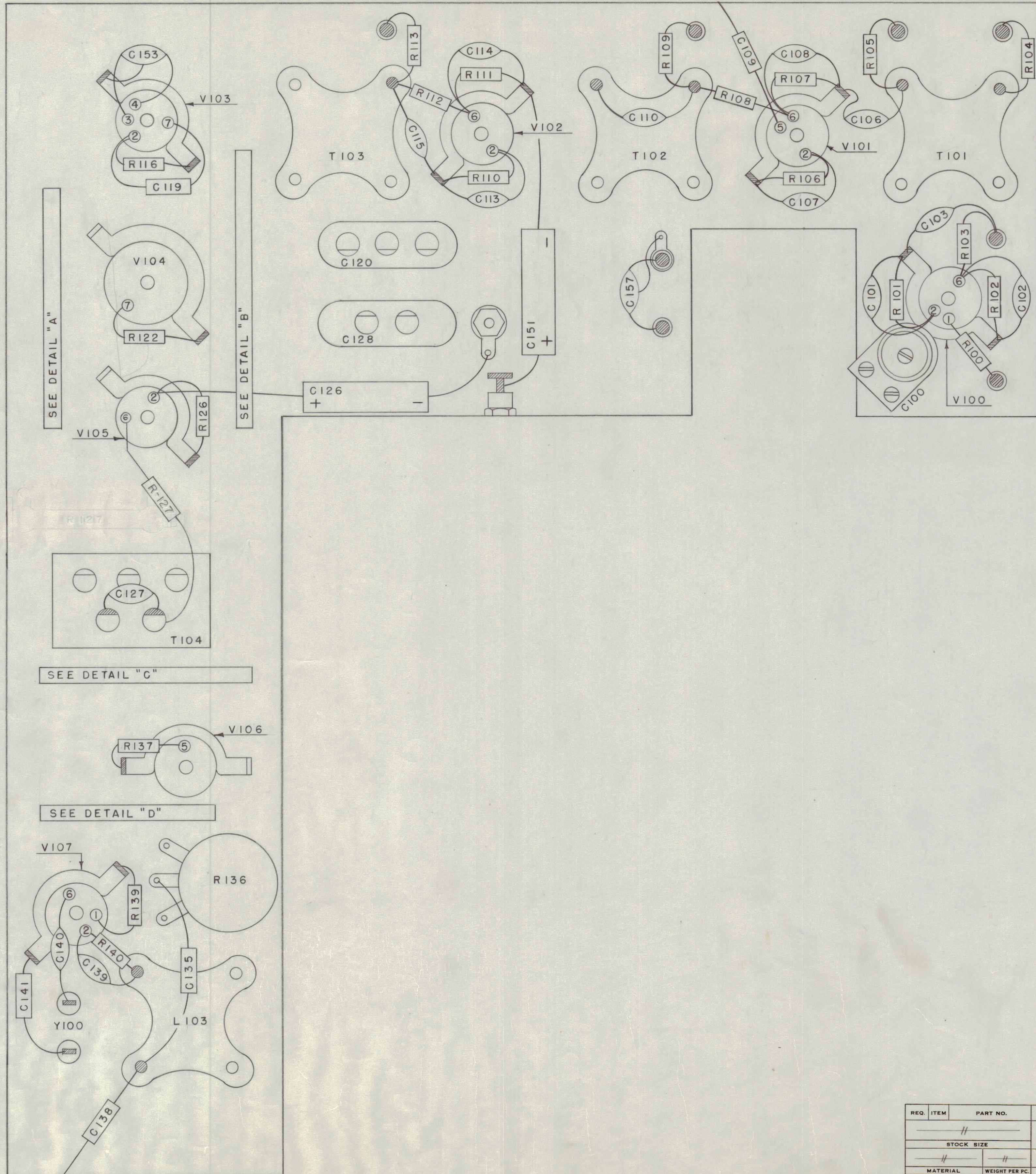
DETAIL "B"
DETECTOR TERMINAL BOARD



DETAIL "C"
REACTANCE TERMINAL BOARD



DETAIL "D"
BFO TERMINAL BOARD



NOTICE TO PERSONS RECEIVING THIS DRAWING
 THE TECHNICAL MATERIEL CORPORATION claims proprietary right in the material disclosed hereinafter. This drawing is issued in confidence for use only in the manufacture of the equipment shown hereon and may not be reproduced or used in any other manner without the written permission of the TECHNICAL MATERIEL CORPORATION. The TECHNICAL MATERIEL CORPORATION assumes no responsibility for the use of this drawing by anyone other than the user. This drawing is loaned for mutual assistance and is subject to recall at any time.

Property of:
 THE TECHNICAL MATERIEL CORPORATION
 MAMARONECK, NEW YORK

ISSUE	ITEM	CHANGED FROM	DATE	CN. NO.	DRAFTS	CHECKER	ENG. APP.
A	1	R127 RELOCATED	4-14-55	1		JMD	WLS

TOLERANCES
 ALL OTHERS: DEC. DIM. ±, FRAC. DIM. ±, ANGULAR DIM. ±
 DRILL, PUNCH, COMMERCIAL STOCK SIZES AND MANUFACTURERS TOLERANCES ARE NOT INCLUDED.

MODEL	PROJECT NO.	ASSY. NO.	DATE
FFR-2			4-14-55
FFR			4-14-55

REQ. ITEM	PART NO.	DESCRIPTION	SYMBOL
#		THE TECHNICAL MATERIEL CORP., MAMARONECK, NEW YORK	
#		BOTTOM VIEW MODEL FFR COMMUNICATION RECEIVER	
#		CDD 6-25-53	
#		DRAWN	ELEC. DES. APP.
#		DRD 6-23-53	DRD 6-24-53
#		CHECKED	FINAL APPROVAL
#		FINISH & SPEC. NO.	

1011-01