

IF IT IS FOUND DESIRABLE TO CHANGE ANY TOLERANCE OR OTHER DETAIL SPECIFIED ON THIS DRAWING NOTIFY THE PURCHASER PROMPTLY.

MAXIMUM ALLOWABLE TOLERANCES HAVE BEEN DETERMINED AND DEVIATIONS WILL BE CAUSE FOR REJECTION. REMOVE ALL BURRS AND SHARP EDGES

STANDARD DRAWING

HP-10011

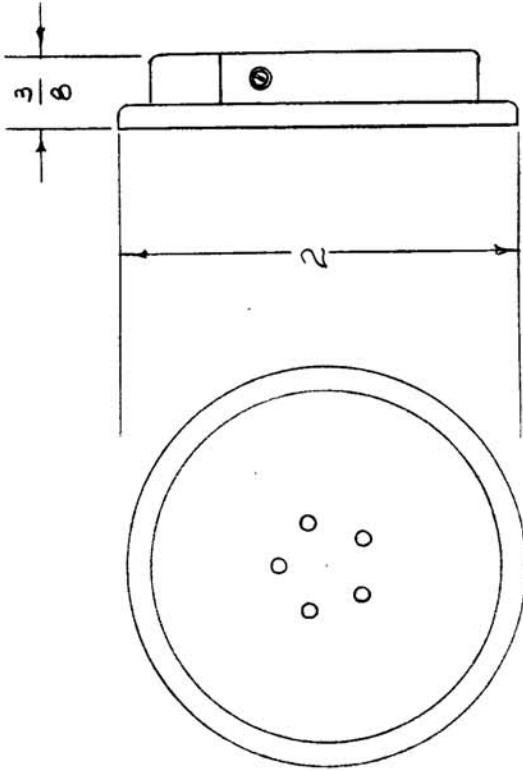
USED ON

DATE

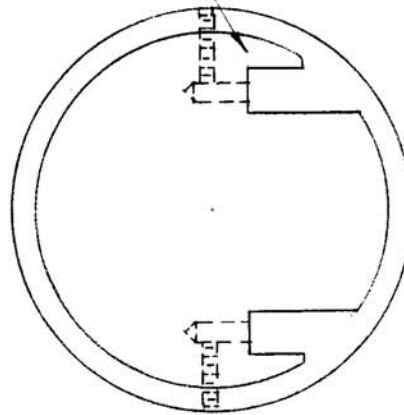
ASS'Y. NO.

PROJECT NO.

MODEL



ELECTRICAL SPECIFICATIONS—
 IMPEDANCE — 300 OHMS
 FREQUENCY — 200 - 4000 C.P.S.



TO FIT TE-133 TIPS (.085 DIA.)

ISSUE ITEM	CHANGED FROM	DATE	CN. NO.	DRAFTS	CHECKER	ENG. APP.
SCALE						
DRILL, PUNCH, COMMERCIAL STOCK SIZES AND MANUFACTURERS TOLERANCES ARE NOT INCLUDED.						
ALL OTHERS	DEC. DIM. ±					
	FRAC. DIM. ±					
	ANGULAR DIM. ±					

REQ. ITEM	PART NO.	DESCRIPTION	SYMBOL
		TMC (Canada) LIMITED	
		OTTAWA	ONTARIO
		EAR PHONE, WAFER	
STOCK SIZE			
MATERIAL			
TYPE & TEMPER			
HEAT TREAT. SPEC.			
FINISH & SPEC. NO.			
DRAWN	AS 2-17-W	ELEC. DES/APP.	MECH. DES. APP.
CHECKED			
FINAL APPROVAL			
HP-10011			