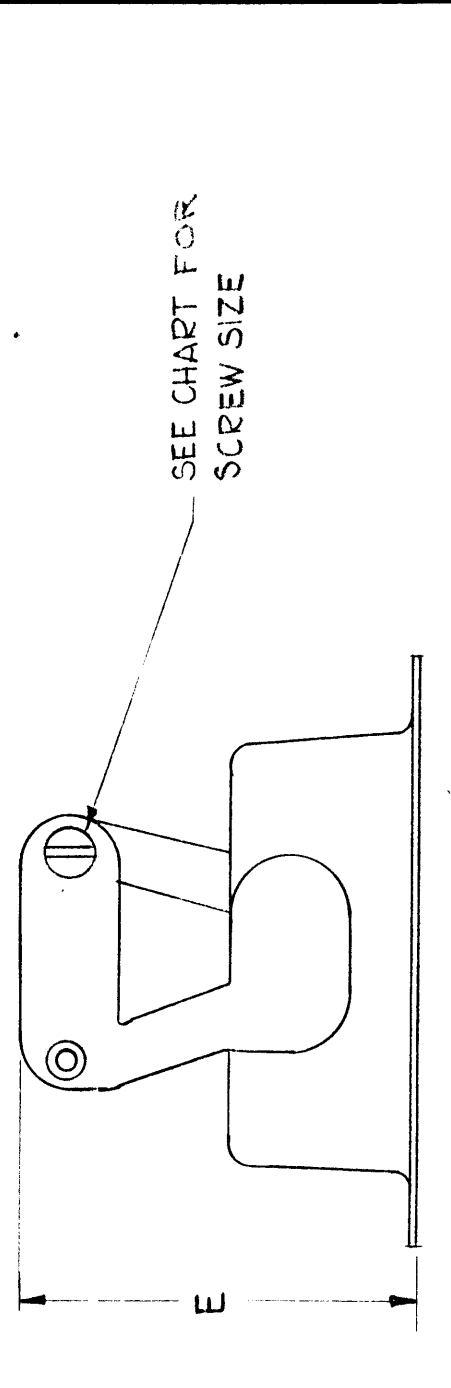
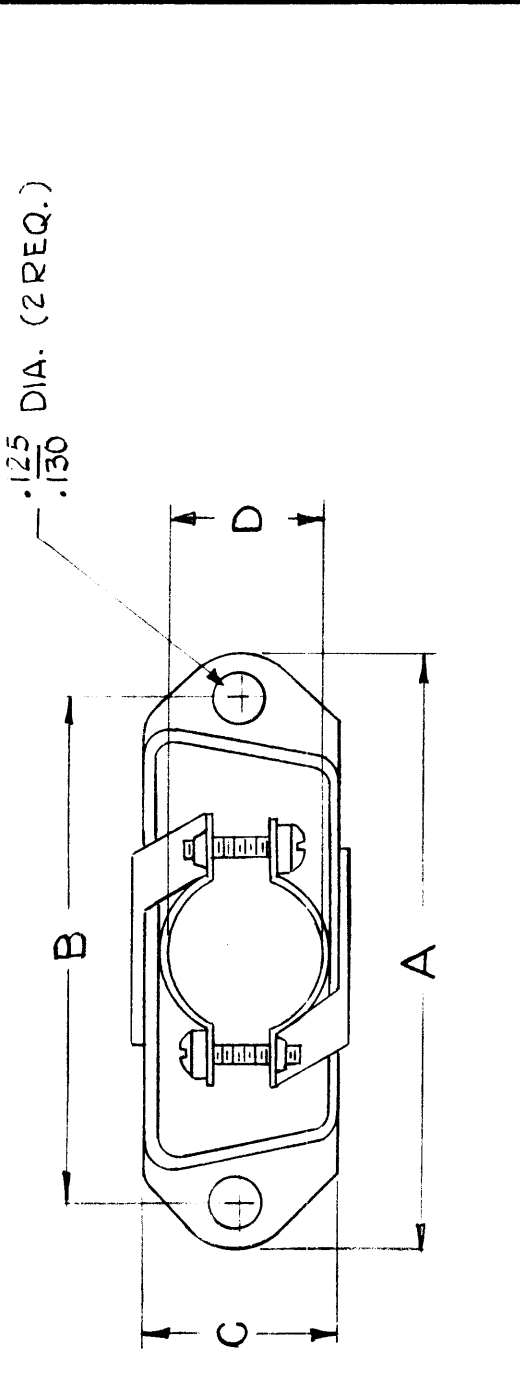


# STANDARD DRAWING

TMC PART NO.	MFGR. PART NO.	DIMENSIONS				USED WITH	CLAMP SCREWS
		A	B	C	D		
H0100-1	17-311-01	1-17/32	1.312	1/2	13/32	JJ310-1 JJ313-1	2-56X 3/8
H0100-2	17-312-01	2-5/64	1.852	1/2	19/32	JJ310-2 JJ313-2	4-40X 3/8
H0100-3	17-313-01	2-23/32	2.500	1/2	23/32	JJ310-3 JJ313-3	4-40X 3/8
H0100-4	17-310-01	1-13/64	.984	1/2	13/32	JJ310-4 JJ313-4	2-56X 3/8
H0100-5	17-314-01	2.661	2.406	1/2	13/16	JJ310-6 JJ313-5	4-40 X 3/8



— SPECIFICATIONS —  
 MATERIAL: STEEL CADMIUM PLATE  
 FINISH: CLEAR CHROMATE  
 HARDWARE SUPPLIED: 2 EA. 4-40X5/16 SCREW  
 2 EA. 4-40 ELASTIC STOP NUT

REV. NO.	DATE	E.M.N. NO.	DRAFT	CHKD	APPD
1	9-4-64	1	G.D.L.		
2	9-15-64	2			

REVISIONS

SYM	DESCRIPTION
X	EXP. RELEASE
Ø	ORIGINAL RELEASE FOR PRODUCTION
A	LINE HO100-5 REPEATED

REQ'D.	ITEM	PART NUMBER	DESCRIPTION	SYMBOL
EATON			LIST OF MATERIAL	
MATERIAL			SEE SPECS.	
FINISH			SEE SPECS.	

DATE	DATE	DATE	DATE
9-4-64	9-4-64	9-17-64	9-19-64

DATE FINISH APPROVAL

DATE	DATE	DATE
9-4-64	9-17-64	9-19-64

DATE FINISH APPROVAL

THE TECHNICAL MATERIEL CORP.  
 MAMARONECK, NEW YORK

CONNECTOR, HOOD

UNLESS OTHERWISE SPECIFIED DIMENSIONS ARE IN INCHES AND INCLUDE CHEMICALLY APPLIED OR PLATED FINISHES

DECIMALS  
 .X ± .05  
 .XX ± .01  
 .XXX ± .005

FRACT. NS  
 ± 1/64  
 ANGLES  
 ± 0° 30'

TOLERANCES

10010H

STB

MODEL USED ON

CODE

C

5401-71

ASSY. NO.

QTY./UNIT

SCALE

1

THE CONTENTS OF THIS DRAWING ARE THE EXCLUSIVE PROPERTY OF THE TECHNICAL MATERIEL CORP. ITS UNAUTHORIZED USE OR REPRODUCTION IN WHOLE OR IN PART IS STRICTLY FORBIDDEN.

NOTES