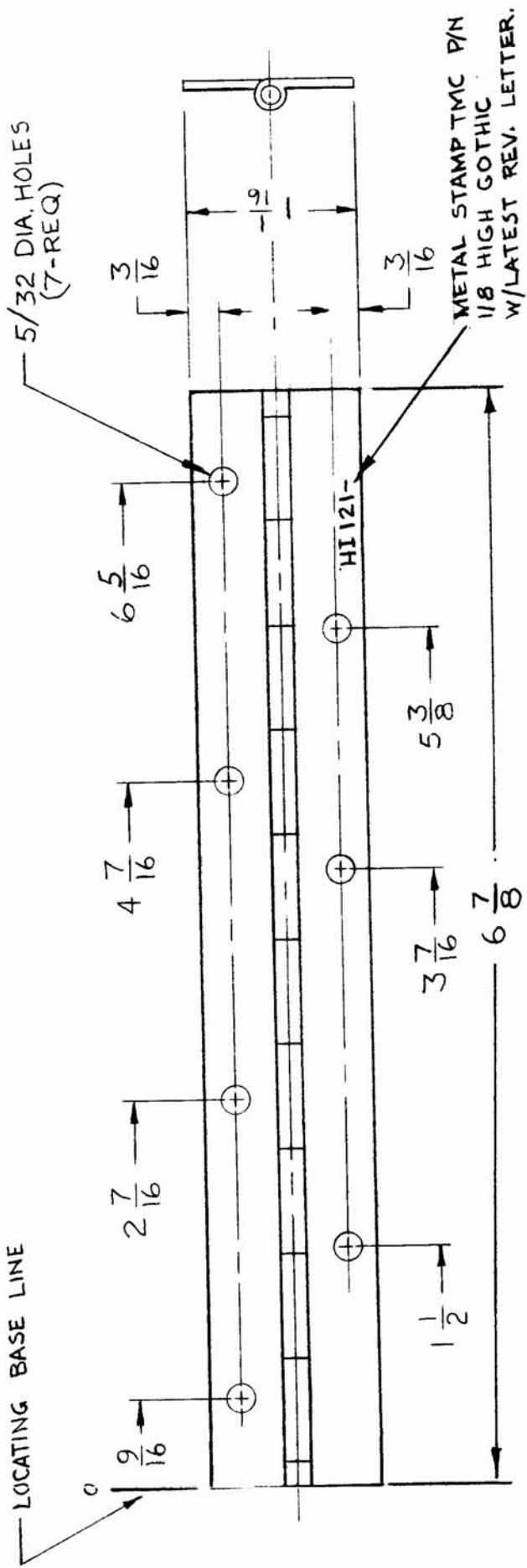


REQ. PER UNIT	USED ON	DATE
1	RTMU-1	1-18-65
1	RTPA-1	1-18-65

HI 121



HINGE SPECIFICATIONS  
 MATERIAL — ALUMINUM 5052-H32  
 GAUGE — .040 THK.  
 PIN MATERIAL — DURALUMINUM  
 PIN DIAMETER — .095 DIA.  
 FINISH — YELLOW IRIDITE PER S404

REMOVE ALL BURRS & SHARP EDGES.

REQ. ITEM	PART NO.	EATON	DESCRIPTION SK.3071 PM-4	SYMBOL
	STOCK SIZE		THE TECHNICAL MATERIEL CORP. MAMARONECK, NEW YORK	
	MATERIAL		HINGE — P.C. CARD BIN	
TYPE & TEMPER	HEAT TREAT. SPEC.	9.0000	CHECKED	FINAL APPROVAL
		1/18/65	W. JORDAN	HI 121
			ELEC. DES. APP.	MECH. DES. APP.
DATE	CH. NO.	DRAFTS	CHECKER	ENG. APP.
1-18-65	88	X JL	J.M	
SCALE	1:1			
DESCRIPTION	ORIGINAL RELEASE FOR PRODUCTION			
	EXPER. RELEASE			
UNLESS OTHERWISE SPECIFIED DIMENSIONS ARE IN INCHES AND INCLUDE CHEMICALLY APPLIED OR PLATED FINISHES				
FRACTIONS	± 1/64 ANGLES, ± 0° 30'			
DECIMALS	± .05			
.XX ± .01				
.XXX ± .005				
TOLERANCES	C S401-264			