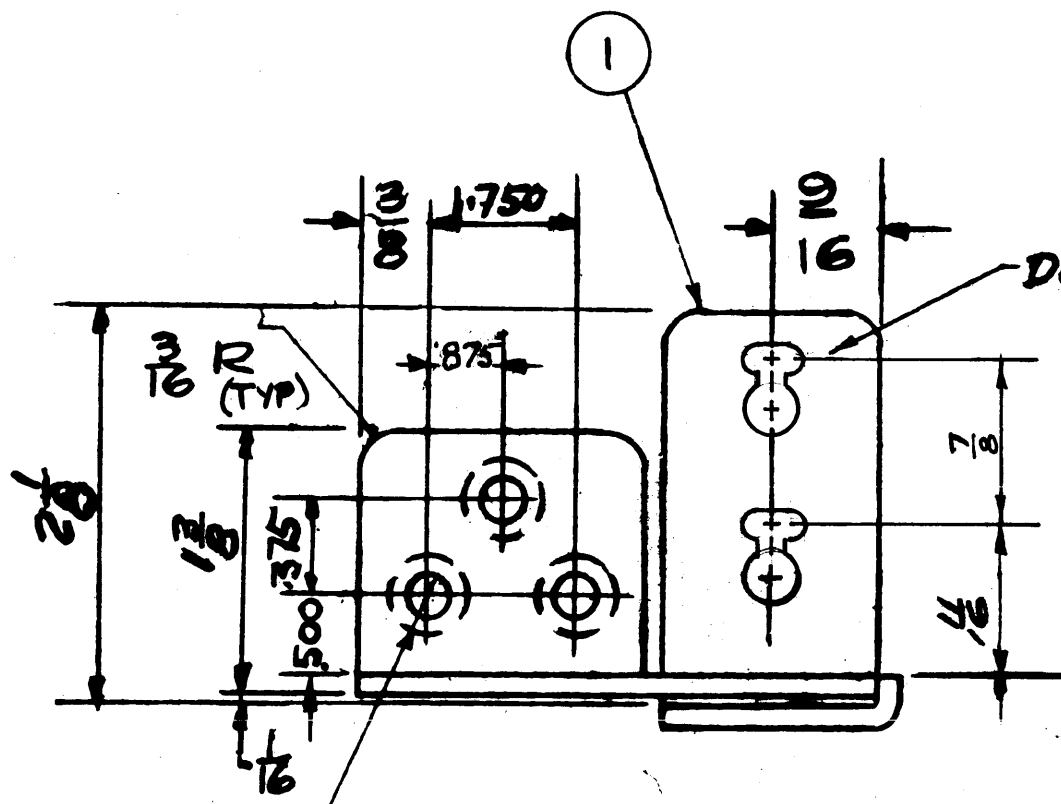


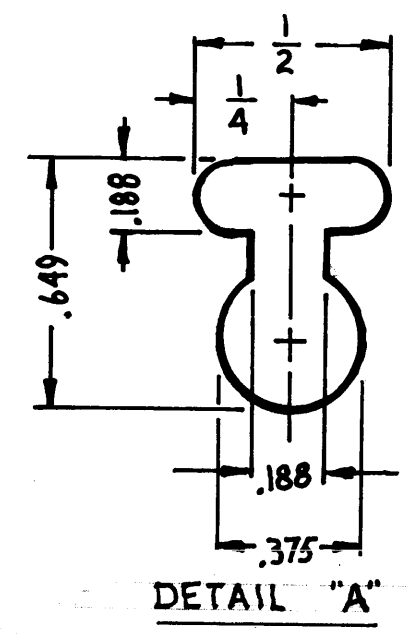
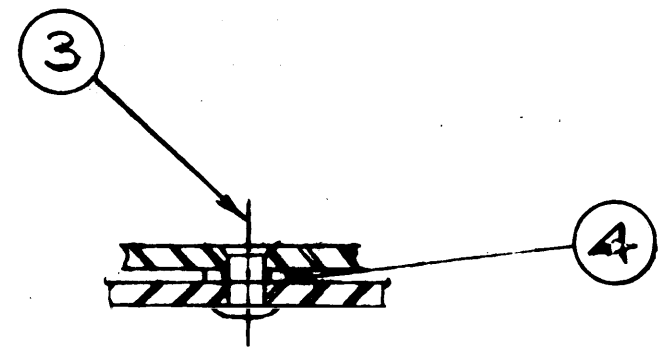
A  
HI 119

REVISIONS

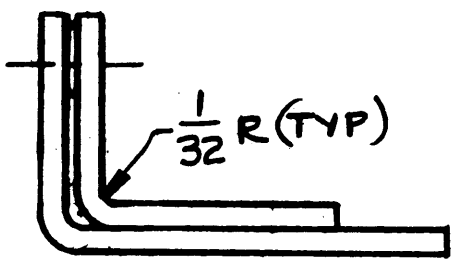
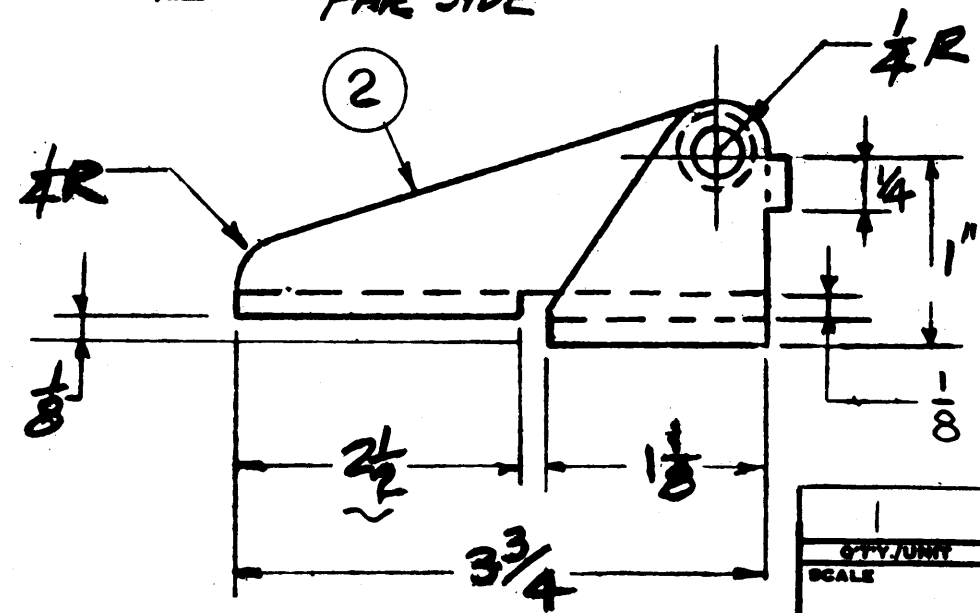
SYM	DESCRIPTION	DATE	E.M.N. NO.	DRAFT	CHKD	APPD
X	EXPER. RELEASE	10-11-64	X			
Ø	ORIGINAL RELEASE FOR PRODUCTION	11-25-64	Ø	R.L.		
A	DETAIL "A" REVISED.	5-5-65	13989	R.L.	QCP	



(DO NOT RIVET TIGHT,  
PARTS MUST MOVE FREELY)



(3) .188 DIA. HOLES &  
C.T.K. Ø2° x .332 DIA.  
FAR SIDE



REQ'D.	ITEM	PART NUMBER	DESCRIPTION	SYMBOL
1	4	FW 10 H BN	#10 FLAT WASHER	
1	3	MS20470A-G-7	3/16 Φ x 7/16 BRASIER UNIV. HD. ALUM. RIVET	
1	2	THIS DWG.	HINGE, MOVING PART	
1	1	THIS DWG.	HINGE, FIXED PART	

STURMER LIST OF MATERIAL

MATERIAL #11 GA. C.R.S. THE TECHNICAL MATERIEL CORP. MAMARONECK, NEW YORK

FINISH MIL CHROME PLATE POLISH QQ-C-320-1-18-9500 TITLE BOTTOM HINGE ASSEMBLY

UNLESS OTHERWISE SPECIFIED DIMENSIONS ARE IN INCHES AND INCLUDE CHEMICALLY APPLIED OR PLATED FINISHES		DRAWN	DATE	FINAL APPROVAL	DATE
DECIMALS .X ± .00 .XX ± .01 .XXX ± .005	TOLERANCES	Checked	11-25-64	R.L.	
FRACTIONS ± 1/64 ± 0 30'		ELECT. DES.	DATE	HI 119	A
		MECH. DES.	DATE		

NOTES

THE CONTENTS OF THIS DRAWING ARE THE EXCLUSIVE PROPERTY OF THE TECHNICAL MATERIEL CORP. ITS UNAUTHORIZED USE OR REPRODUCTION IN WHOLE OR IN PART IS STRICTLY FORBIDDEN.

1	RAK 102-2	A3716
QTY/UNIT	MODEL USED ON	ASSY. NO.
SCALE	CODE	
	A	