

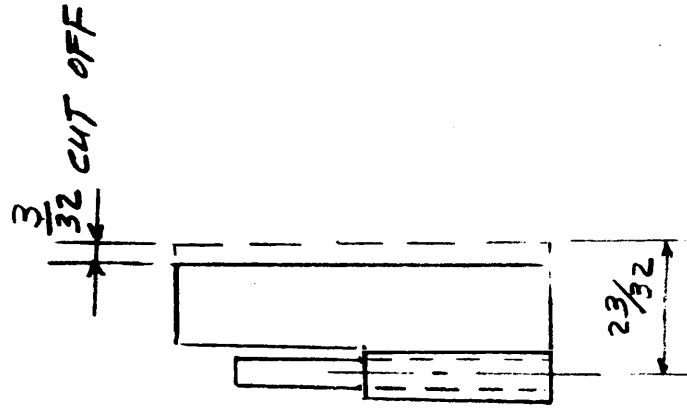
HI 117

REVISIONS					
SYM	DESCRIPTION	DATE	E.M.N. NO.	DRAFT	CHKD
X	EXPER. RELEASE	10-18-64	- X	<i>[Signature]</i>	
Ø	ORIGINAL RELEASE FOR PRODUCTION	11-25-64	Ø	<i>[Signature]</i>	

FINISH - 1) CAD. PLATED (S105)
2) DULL BLACK PAINT (S870)

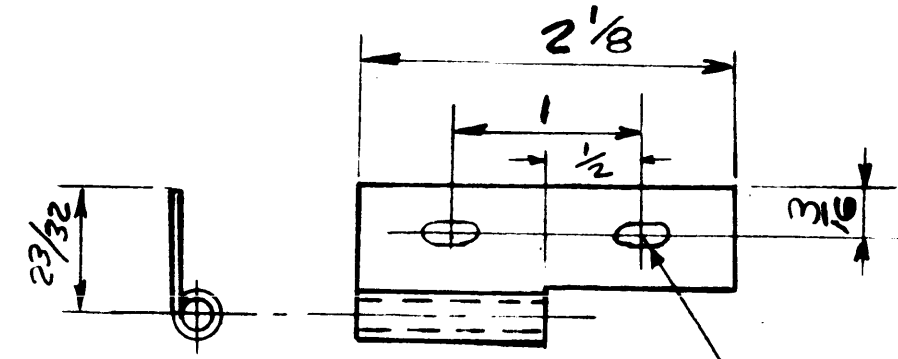
FINISH 1) CAD PLATED
S-105

HI117-1



FRONT DOOR MALE HINGE
(MODIFIED)
(3) PER UNIT

HI117-2



1 7/16 OPEN x .060 THK SH. x .132 PIN DIA
LEFT HAND LOOSE JOINT FEMALE HINGE

3	RAK 102-2	MS 3885
QTY/UNIT	MODEL USED ON	ASSY. NO.
SCALE	CODE	
	A	

NOTES

THE CONTENTS OF THIS DRAWING ARE THE EXCLUSIVE PROPERTY OF THE TECHNICAL MATERIEL CORP. ITS UNAUTHORIZED USE OR REPRODUCTION IN WHOLE OR IN PART IS STRICTLY FORBIDDEN.

REQ'D.	ITEM	PART NUMBER	DESCRIPTION	SYMBOL
STURMER LIST OF MATERIAL				
MATERIAL			THE TECHNICAL MATERIEL CORP. MAMARONECK, NEW YORK	
AS NOTED			TITLE	
FINISH			FRONT DOOR HINGE	
AS NOTED				
UNLESS OTHERWISE SPECIFIED DIMENSIONS ARE IN INCHES AND INCLUDE CHEMICALLY APPLIED OR PLATED FINISHES				
DECIMALS		FRACTIONS		
.X ± .00		± 1/64		
.XX ± .01		ANGLES		
.XXX ± .005		± 0 20'		
TOLERANCES				
DRAWN		DATE	FINAL APPROVAL	
CHECKED		DATE	<i>[Signature]</i>	
ELECT. DES.		DATE	HI 117	
MECH. DES.		DATE	Ø	
		DATE	11-25-64	
		SHEET		
		REV. LTR.		