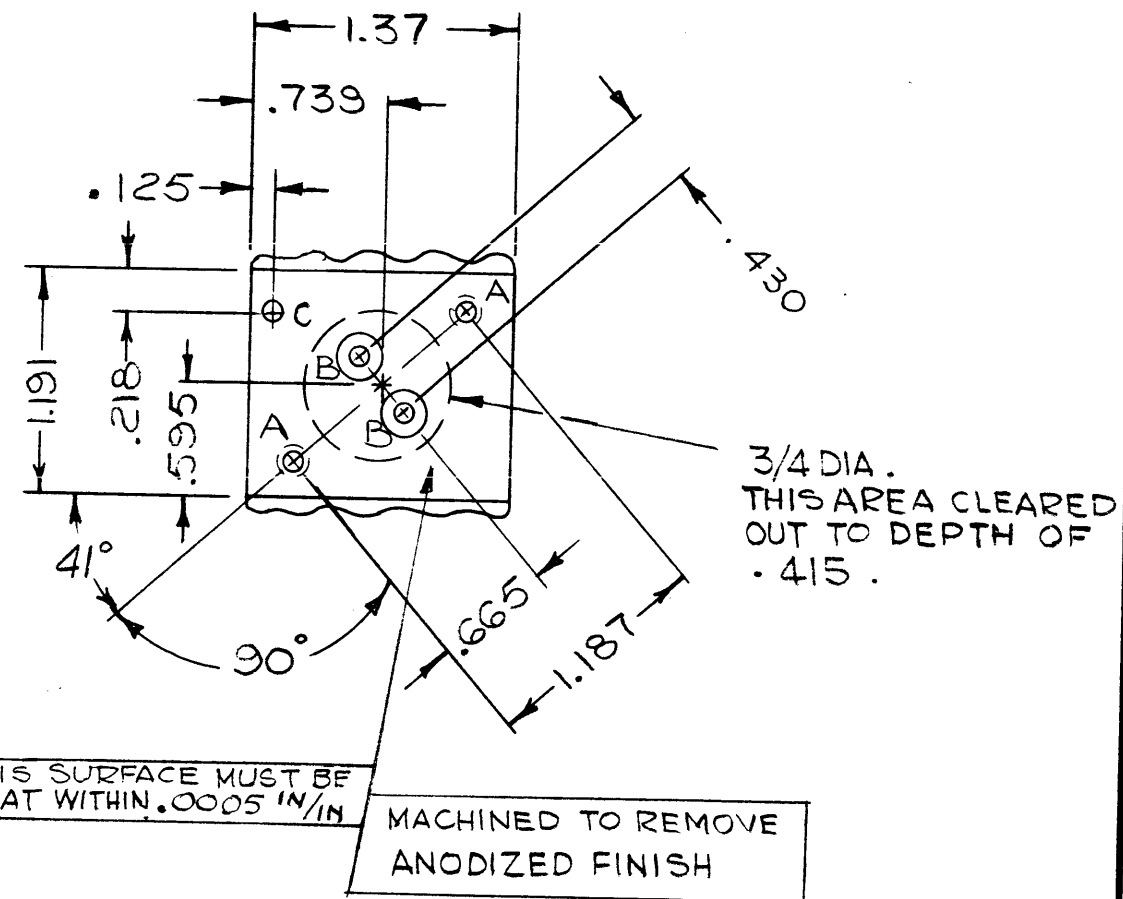
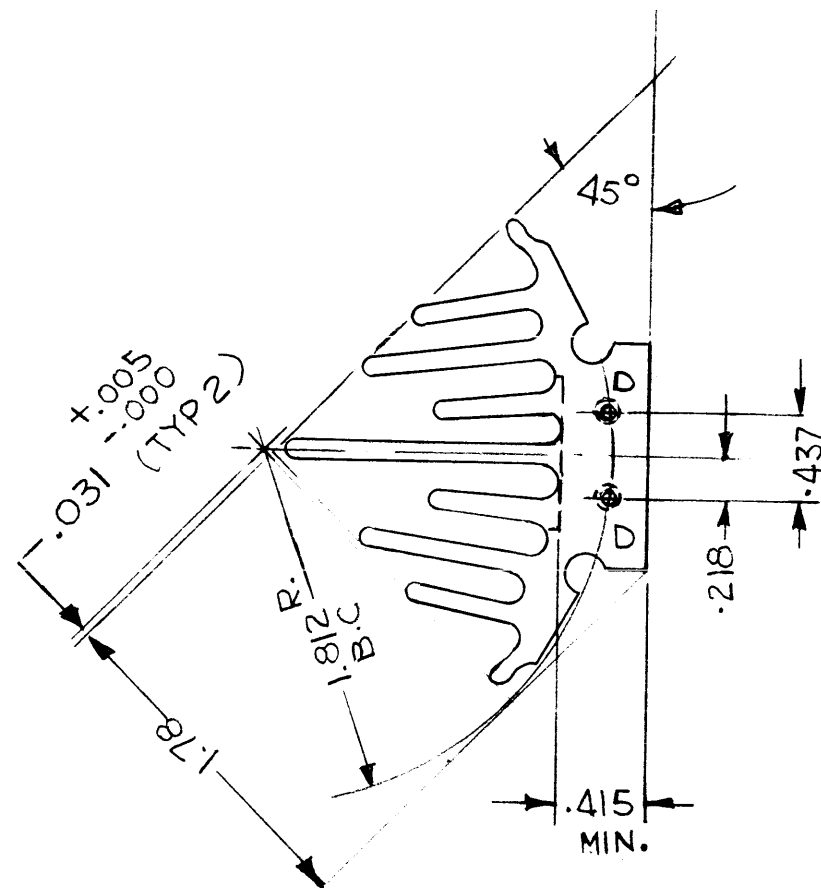
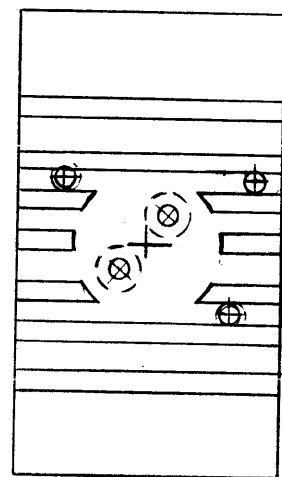


HOLE LEGEND		
HOLE	DESCRIPTION	REQ
A	DR & TAP 6-32	2
B	SEE DETAIL	2
C	.111 DIA	1
D	DR & TAP 4-40 NC X 3/8 DEEP	2

REVISIONS						
ZONE	LTR	DESCRIPTION	DATE	E.M.N.NO	DRAFT	CHKD APPD
	X	EXP. RELEASE	7-12-68			
	Ø	ORIG. RELEASE FOR PROD	11/4/68	Ø	R.G.	

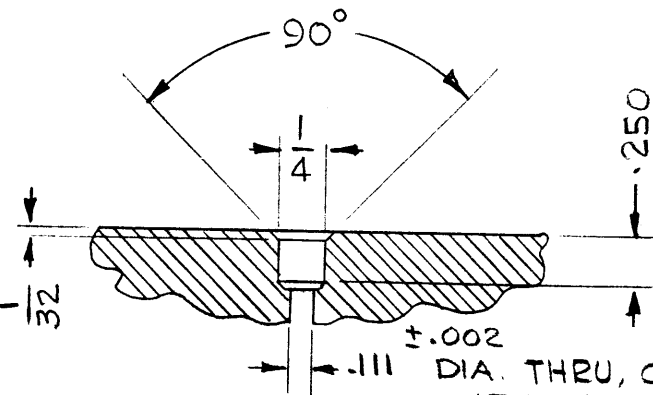
NOTES:

1- IMPORTANT, "C" HOLE MUST BE LOCATED BETWEEN FINS.



THIS SURFACE MUST BE FLAT WITHIN .0005 IN/IN

MACHINED TO REMOVE ANODIZED FINISH



"B" HOLE DETAIL

.111 DIA. THRU, C'BORE .250 DIA X .250 DEEP THEN C'SK 60° TO .135 ±.010

4	HFRR-4	
QTY / UNIT	MODEL USED ON	ASS'Y NO.
APPLICATION		
	CODE C	

NOTICE TO PERSONS RECEIVING THIS DRAWING
 THE TECHNICAL MATERIEL CORPORATION claims proprietary right in the material disclosed hereon. This drawing is issued in confidence for engineering information only and may not be reproduced or used to manufacture anything shown hereon without permission from THE TECHNICAL MATERIEL CORPORATION to the user. This drawing is loaned for mutual assistance and is subject to recall at any time.

UNLESS OTHERWISE SPECIFIED DIMENSIONS ARE IN INCHES AND INCLUDE CHEMICALLY APPLIED OR PLATED FINISHES	
DECIMALS .X ± .05 .XX ± .01 .XXX ± .005	FRACTIONS 1/64 TOLS. ANGLES 0° - 30'
MATERIAL ALUMINUM EXTRUSION 6063-T6	
FINISH S120 BLACK ANODIZED	

REQ'D	ITEM	PART NUMBER	DESCRIPTION	SYM.
LIST OF MATERIAL				
THE TECHNICAL MATERIEL CORP. MAMARONECK, NEW YORK				
HEAT SINK, BLOWER TYPE SINGLE SECTION				
SIZE	CODE	IDENT. NO.	DWG NO.	ISSUE
B	82679		HD112	Ø
SCALE		SHEET OF		

FINAL APPROVAL	DATE
MECH. DES.	DATE
ELECT. DES.	DATE
CHECKED	DATE
DRAWN	DATE