

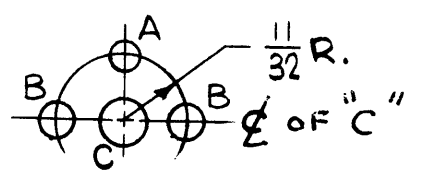
# STANDARD DRAWING

## MOUNTING CONFIGURATIONS

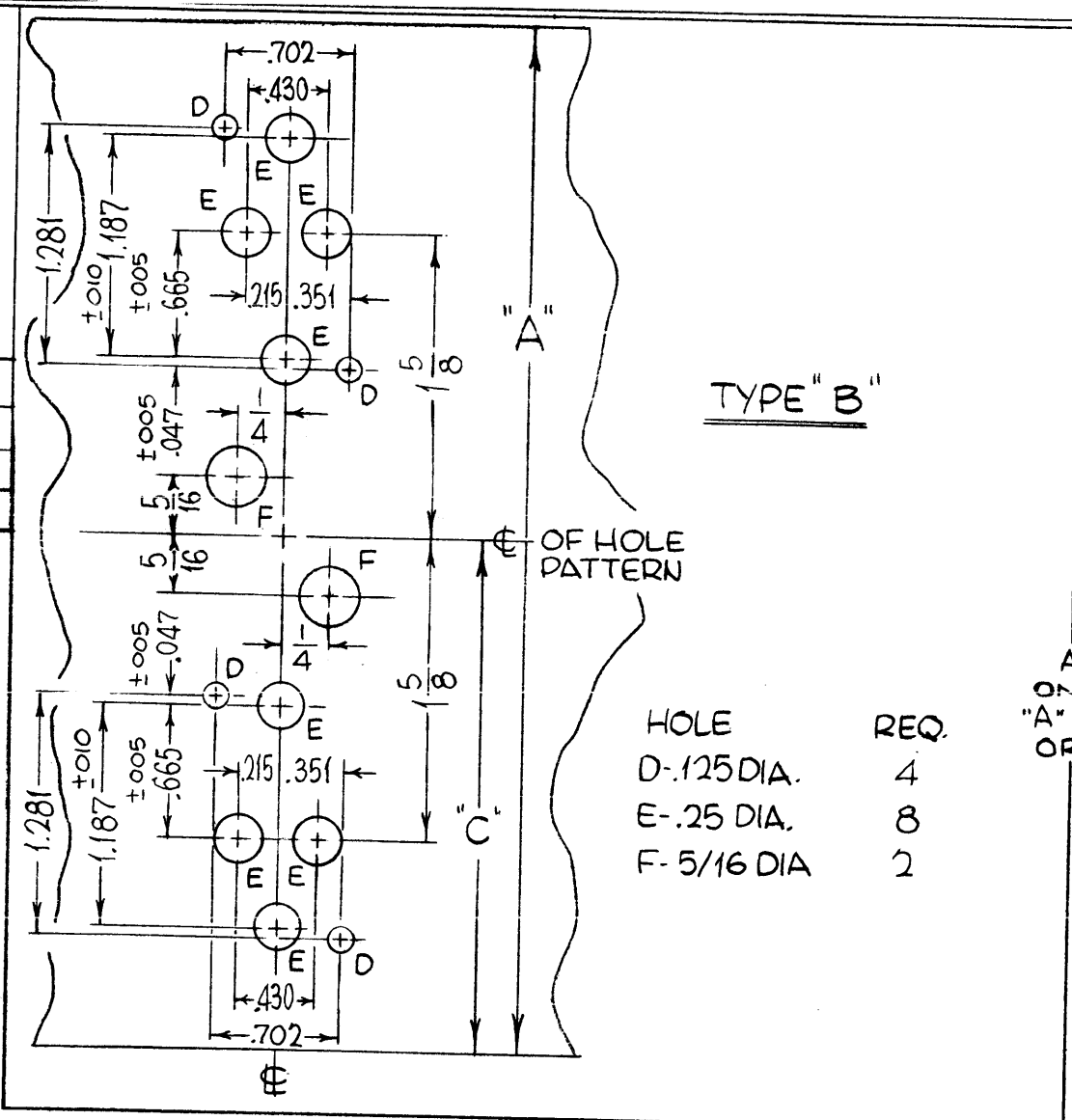
REVISIONS					
SYM	DESCRIPTION	DATE	E.M.N. NO.	DRAFT	CHKD
XI	STYLE "B" ADDED	11-22-65		Jc	
Ø	ORIGINAL RELEASE FOR PROD	12/14/65			fla

HD103

### TYPE A



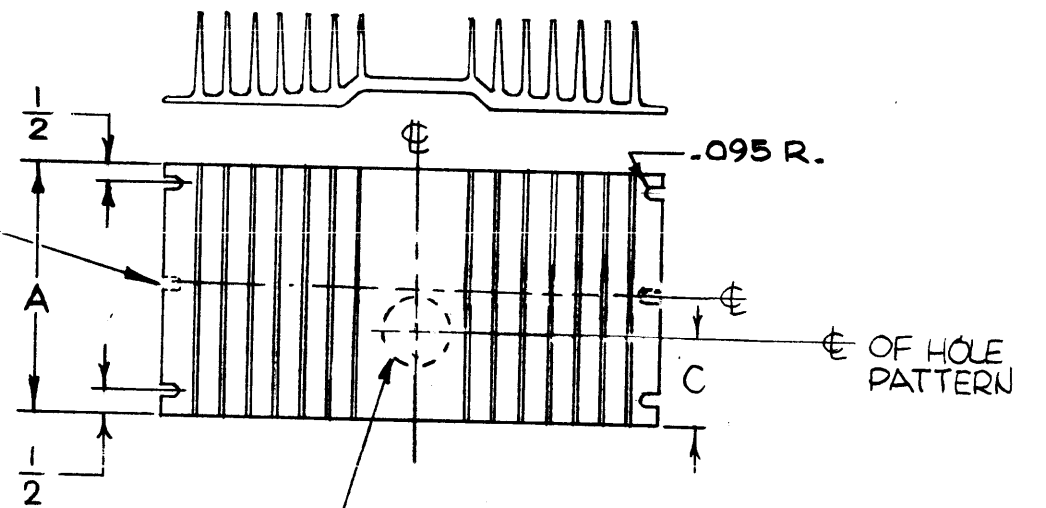
HOLE	DESCRIPTION	REQ
A	5/32 DIA.	1
B	3/16 DIA.	2
C	1/4 DIA.	1



### TYPE "B"

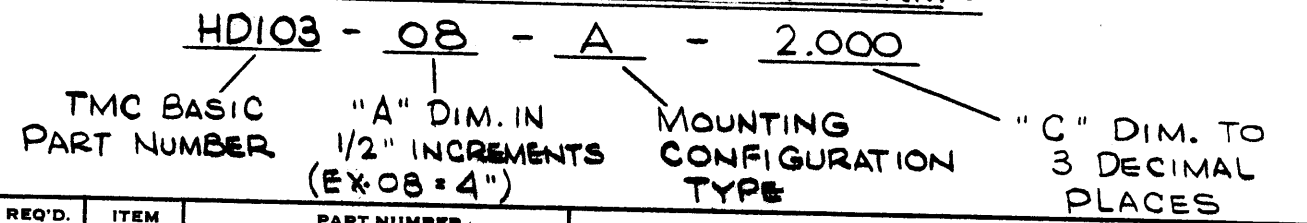
HOLE	REQ.
D- .125 DIA.	4
E- .25 DIA.	8
F- 5/16 DIA	2

ADD SLOTS ON  $\phi$  WHEN "A" DIM. IS 6 IN. OR OVER (2 PLACES)



FOR MOUNTING CONFIGURATION SEE CHART

TMC PART NO. TO BE IN FOLLOWING FORM :



REQ'D.	ITEM	PART NUMBER	DESCRIPTION	SYMBOL
<b>LIST OF MATERIAL</b>				
MATERIAL			<b>THE TECHNICAL MATERIEL CORP.</b> MAMARONECK, NEW YORK	
FINISH			<b>HEAT SINK, SEMICONDUCTOR</b>	
UNLESS OTHERWISE SPECIFIED DIMENSIONS ARE IN INCHES AND INCLUDE CHEMICALLY APPLIED OR PLATED FINISHES				
DRAWN H. AUSTIN		DATE 10-21-65	FINAL APPROVAL [Signature]	
CHECKED [Signature]		DATE 12/14/65	DATE 12/15/65	
ELECT. DES. [Signature]		DATE 12/14/65	HD103	
MECH. DES. [Signature]		DATE 12/14/65	SHEET	
REV. LTR.				

### NOTES

THE CONTENTS OF THIS DRAWING ARE THE EXCLUSIVE PROPERTY OF THE TECHNICAL MATERIEL CORP. ITS UNAUTHORIZED USE OR REPRODUCTION IN WHOLE OR IN PART IS STRICTLY FORBIDDEN.

2	TPSG-1	ASS'Y. NO.
Q'TY./UNIT	MODEL USED ON	
SCALE	CODE	S401-408 (MODEL 12)