

TMC P/N	MFG P/N	L ±.030	A ±.015	B ±.015	NO. OF MOUNTING HOLES	FINISH
HD102-1	9016	3.000	.500	2.000	4	NON INSULATED
HD102-2	9016	4.000	.500	3.000	4	NON INSULATED

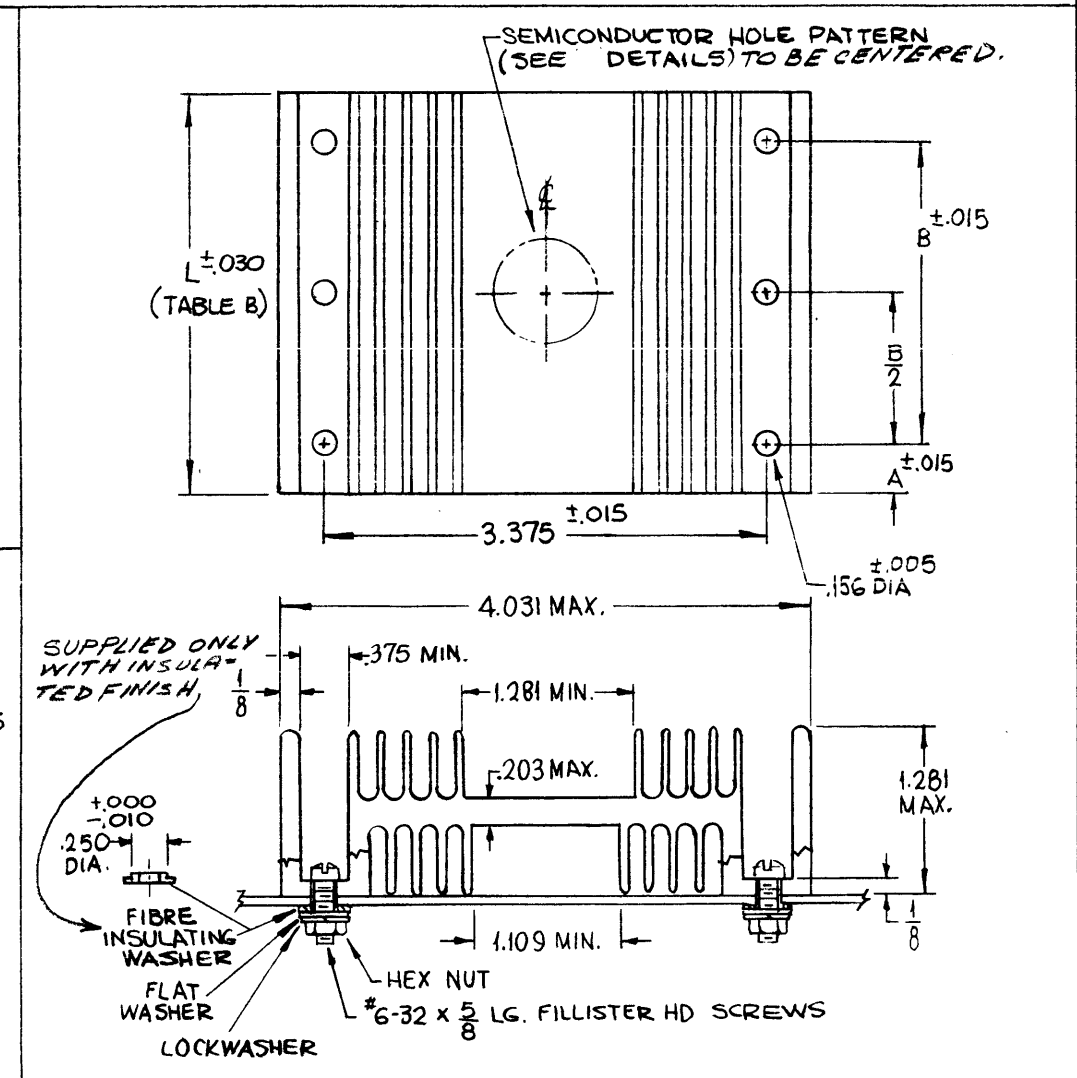
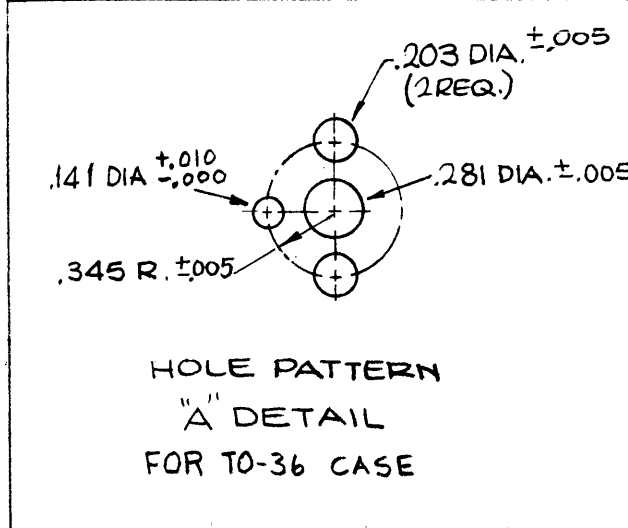
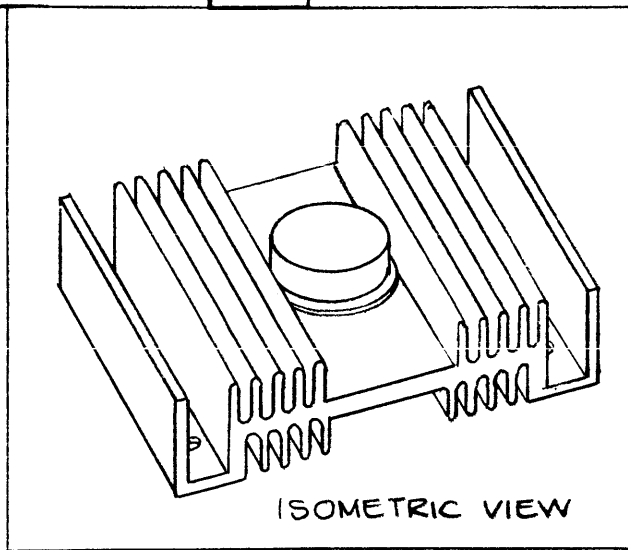
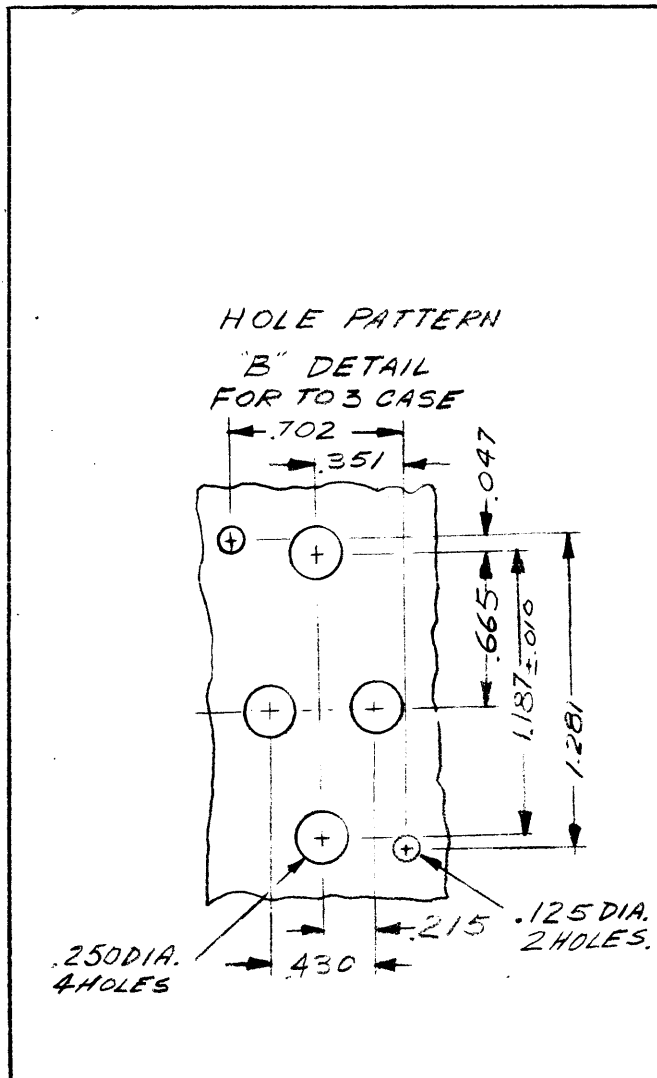
REVISIONS						
SYM	DESCRIPTION	DATE	E.M.N. NO.	DRAFT	CHKD	APPD
X	EXPERIMENTAL RELEASE	10-27-64	X	SRG		
Ø	ORIGINAL RELEASE FOR PRODUCTION	11-2-64	Ø	JF		
A	HOLE PATTERN, "A" DETAIL; .141 TOL. WAS ±.005; "FOR TO-36 CASE" ADD; SPECS, FINISH: "BLACK DIELECTRIC FINISH..." ADD.	3-23-65	13696	JF	JCB	
B	TMC CHT HD102-2, DETAIL "B", SUPPLY NOTE P/N DESCRIPTION ADDED.	11/1/65	15270	H.V.	JCB	

HD102

TMC P/N DESCRIPTION
 HD102-1 A
 BASIC FIN SIZE PATTERN DETAIL
 SEE CHART ABOVE

NO. OF HOLES	±.030 L	±.015 A	±.015 B	B/2
2	1.000	.500		
2	1.500	.750		
2	2.000	1.000		
4	2.500	.500	1.500	
4	3.000	.500	2.000	
4	4.000	.500	3.000	
4	5.000	.500	4.000	
6	6.000	.500	5.000	2.500

HEAT SINK SIZES AVAILABLE



SPECIFICATIONS:
MATERIALS:
 - RADIATOR: EXTRUDED ALUMINUM ALLOY, 6063-T6
 - FINISH: BLACK ANODIZE PER MIL-A-8625A (NON INSULATED) BLACK DIELECTRIC FINISH (500 VDC MIN. BREAKDOWN) (INSULATED)
 - HARDWARE: STAINLESS STEEL, PASSIVATED
 - THERMAL RESISTANCE: 0.8° C/WATT (FORCED CONVECTION 1000 FT./MIN.)
 - ALL MOUNTING HARDWARE SUPPLIED WITH ASS'Y.
 - FIBRE WASHER SUPPLIED ONLY WITH INSULATED ASS'Y.

NOTES

STANDARD DRAWING		
Q'TY./UNIT	MODEL USED ON	ASS'Y. NO.
SCALE	CODE	
	C	S401-105

THE CONTENTS OF THIS DRAWING ARE THE EXCLUSIVE PROPERTY OF THE TECHNICAL MATERIEL CORP. ITS UNAUTHORIZED USE OR REPRODUCTION IN WHOLE OR IN PART IS STRICTLY FORBIDDEN.

REQ'D.	ITEM	PART NUMBER	DESCRIPTION	SYMBOL
LIST OF MATERIAL				
MATERIAL		SEE SPECS		
FINISH		SEE SPECS		
UNLESS OTHERWISE SPECIFIED DIMENSIONS ARE IN INCHES AND INCLUDE CHEMICALLY APPLIED OR PLATED FINISHES		TITLE		
		HEAT SINK, SEMI CONDUCTOR		
DRAWN		SRG	DATE	10-27-64
CHECKED		@	DATE	10-30-64
ELECT. DES.			DATE	
MECH. DES.		JC	DATE	11/2/64
DECIMALS		FRACTIONS		
.X ± .05		± 1/64		
.XX ± .01		ANGLES		
.XXX ± .005		± 0° 30'		
TOLERANCES				
		DRAWN		SRG
		DATE		10-27-64
		CHECKED		@
		DATE		10-30-64
		ELECT. DES.		
		DATE		
		MECH. DES.		JC
		DATE		11/2/64
		SHEET		
		REV. LTR.		