

THE CONTENTS OF THIS DRAWING ARE THE EXCLUSIVE PROPERTY OF THE TECHNICAL MATERIEL CORP. ITS UNAUTHORIZED USE OR REPRODUCTION IN WHOLE OR IN PART IS STRICTLY FORBIDDEN.

REQ. PER UNIT

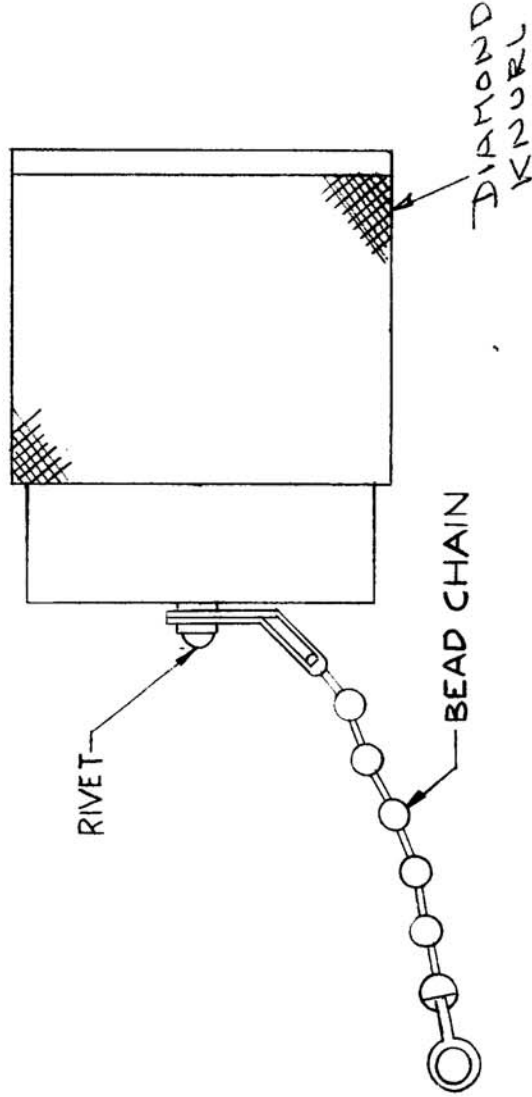
MODEL

USED ON ASSY. NO.

HB-119

DATE
12-1-61

MATERIAL: BODY~BRASS
FINISH SILVER PLATED WITH RHODIUM FLASH
MATES W/ALL QDS RECEPTACLES
CHAIN LENGTH- 5 INCHES



REQ. ITEM	PART NO.	DESCRIPTION	SYMBOL
		THE TECHNICAL MATERIEL CORP. MAMARONECK, NEW YORK	
	STOCK SIZE	COVER, ELECTRICAL, CONNECTOR	
	MATERIAL	QUICK DISCONNECT INSERT TYPE	
	TYPE & TEMPER	A. A.	JFM
	HEAT TREAT. SPEC.	CHECKED	FINAL APPROVAL
	FINISH & SPEC. NO.	HB-119	
SYM		DESCRIPTION	
DATE	CH. NO.	DRAFTS	CHECKER
SCALE: S-401-70-3125			ENG. APP.
UNLESS OTHERWISE SPECIFIED: DIMENSIONS ARE IN INCHES TOLERANCES ON FRAC. ± 1/64 DEC. ± .005 ANGLES ± 1/2° REMOVE ALL BURRS AND SHARP EDGES MAXIMUM ALLOWABLE TOLERANCES HAVE BEEN DETERMINED AND ANY DEVIATIONS WILL BE CAUSE FOR REJECTION.			