

STANDARD DRAWING

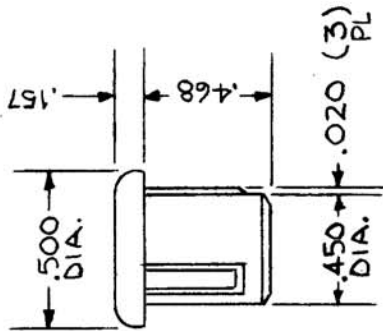
IF IT IS FOUND DESIRABLE TO CHANGE ANY TOLERANCE OR OTHER DETAIL SPECIFIED ON THIS DRAWING NOTIFY THE PURCHASER PROMPTLY.

MAXIMUM ALLOWABLE TOLERANCES HAVE BEEN DETERMINED AND DEVIATIONS WILL BE CAUSE FOR REJECTION. REMOVE ALL BURRS AND SHARP EDGES

HB 100 A

USED ON

QTY.	MODEL	PROJECT NO.	ASSY. NO.	DATE
14	LPP-4		A3512	1-5-67



DIMS. FOR REF. ONLY

REQ. ITEM	PART NO.	DESCRIPTION	SYMBOL
		THE TECHNICAL MATERIEL CORP. MAMARONECK. NEW YORK	
STOCK SIZE		PLASTIC	
MATERIAL		APPARATUS BLANK	
WEIGHT PER PC.			
TYPE & TEMPER			
HEAT TREAT. SPEC.			
FINISH & SPEC. NO.			

ISSUE ITEM	CHANGED FROM	DATE	CN. NO.	DRAFTS	CHECKER	ENG. APP.
A	COMPLETELY REVISED	1-5-67	17598	RME	<i>[Signature]</i>	

SCALE	TOLERANCES
	DEC. DIM. ± FRAC. DIM. ± ANGULAR DIM. ±

DRILL, PUNCH, COMMERCIAL STOCK SIZES AND MANUFACTURERS TOLERANCES ARE NOT INCLUDED.

DRAWN	ELEC. DES. APP.	MECH. DES. APP.
LG 11/13/52		<i>[Signature]</i>
CHECKED		
<i>[Signature]</i>		

FINAL APPROVAL
SA01-154 (P1801) HB 100 A SA01-123 (PJ-29)