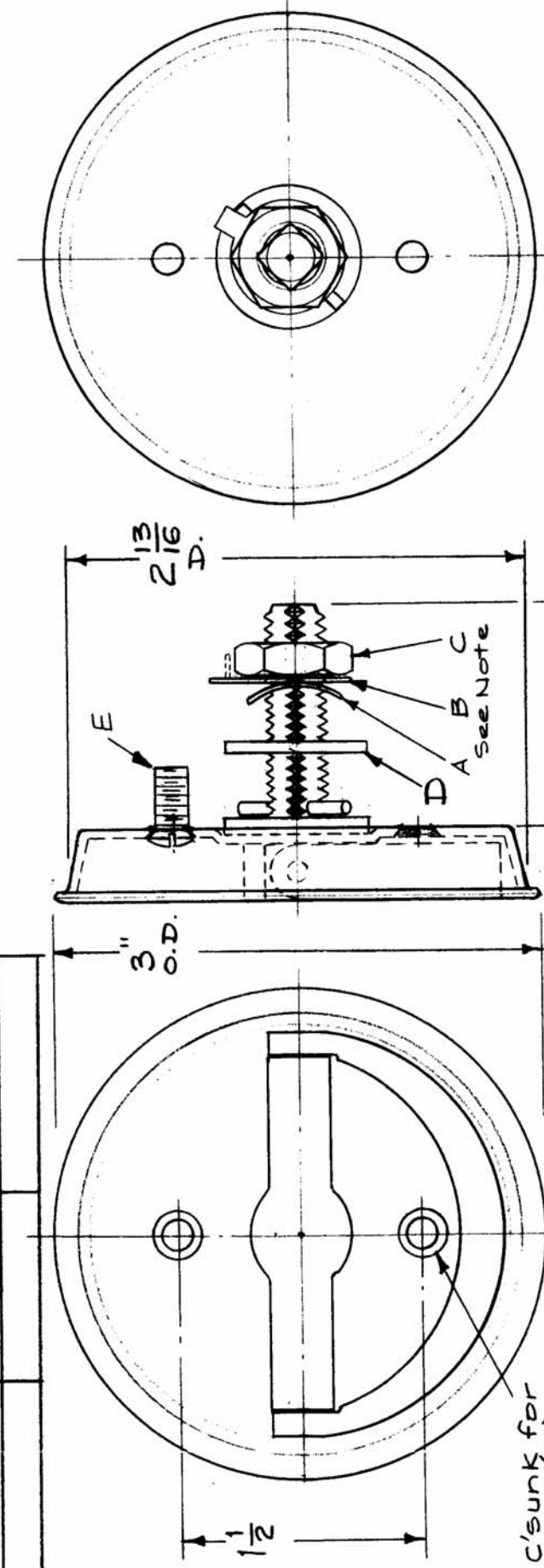


TMC NO.	MFG. NO.	DIM. "L"	USED ON SECTION	HA-114	B
HA-114-1	1198	1-3/8	MODEL AX-227		
HA-114-2	1198 MOD.	11/16	AX-214		



Mounting Hole for Cup - 2 13/16 D.

NOTE - HARDWARE (Supplied by Mfgr.)

- A - Pressure Washer
- B - Locking Washer
- C - Hex Nut (5/8 FLATS)
- D - 1/16 THK. X 7/8 OD Flat Washer
- E - #6-32 X 3/8 LG OVAL HEAD SCREWS, 2 REQ.

REQ. PER. UNIT	4	MODEL	GPT-10K	SECTION	AX-227	SYMBOL	
	4		GPT-40K		AX-214		
TMC USE ONLY		PART NO.		DESCRIPTION		SYMBOL	
For Mating Rods - Use PM-531-				THE TECHNICAL MATERIEL CORP.			
For Mating Cams - Use PO-186				MAMARONECK, NEW YORK			
WITH HA-114-2 OMIT HARDWARE, USE PM-688 FOR CAM.				HANDLE, FLUSH TYPE			
		STOCK SIZE		MATERIAL		DATE	
		Handle-Cast Bronze		Handle-Cast Bronze		16/29/59	
		CUP-Wrought Bronze		CUP-Wrought Bronze		DRAWN	
						CHECKED	
						ELEC. DES. APP. MECH. DES. APP.	
		TYPE & TEMPER		HEAT TREAT. SPEC.		FINAL APPROVAL	
		CHROME PLATED		(CUP & HANDLE)		HA-114	
		FINISH & SPEC. NO.				B	

TOLERANCES
MAXIMUM ALLOWABLE TOLERANCES HAVE BEEN DETERMINED AND ANY DEVIATIONS WILL BE CAUSE FOR REJECTION. REMOVE ALL BURRS AND SHARP EDGES

SCALE: Full
5401-78
DATE: 1/20/65
CH. NO.: 4132
DRAFTS: RU
CHECKER: JH
ENG. APP.: JH