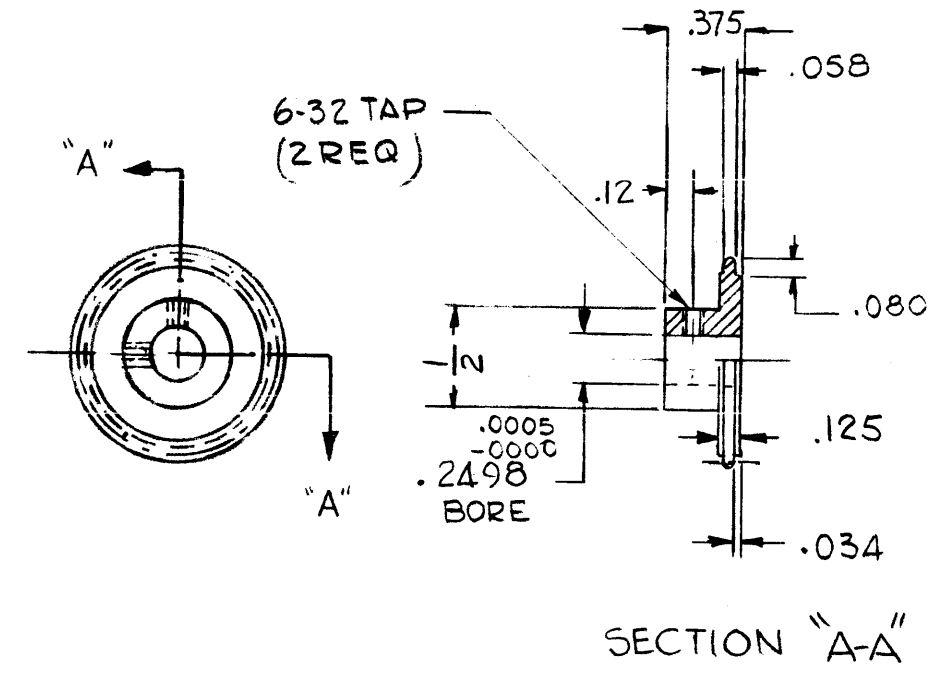


5		4		3		2		1					
TMC PART NO.	MFG. STOCK No.	NO. OF TEETH	PITCH DIAMETER	OUTSIDE DIAMETER	MATERIAL	REVISIONS							
						E.M.N. NO.	DRAFT	CHKD	ZONE	LTR	DESCRIPTION	DATE	APPROVED
GR243-1	3MP26S-16	16	.800 ⁺⁰⁰⁰ _{-.002}	.862 ⁺⁰⁰⁰ _{-.004}	*303 STAINLESS STEEL		Q			Ø	FOR FINAL RELEASE FOR PRODUCTION	9/2/75	
GR243-2	3MP26S-20	20	1.000 ⁺⁰⁰⁰ _{-.002}	1.062 ⁺⁰⁰⁰ _{-.004}	*303 STAINLESS STEEL	21515	G.D.L.			A	TAP FOR 6-32 ADD #50 SUB DR DEL.	2-14-77	
GR243-3	3MP26S-32	32	1.600 ⁺⁰⁰⁰ _{-.002}	1.662 ⁺⁰⁰⁰ _{-.004}	*303 STAINLESS STEEL								
GR243-4	3MP26S-40	40	2.000 ⁺⁰⁰⁰ _{-.002}	2.062 ⁺⁰⁰⁰ _{-.004}	*303 STAINLESS STEEL								



STANDARD

QTY / UNIT	MODEL USED ON	ASS'Y NO.
401 - 453	CODE	

NOTICE TO PERSONS RECEIVING THIS DRAWING
 THE TECHNICAL MATERIEL CORPORATION claims proprietary right in the material disclosed hereon. This drawing is issued in confidence for engineering information only and may not be reproduced or used to manufacture anything shown hereon without permission from THE TECHNICAL MATERIEL CORPORATION to the user. This drawing is loaned for mutual assistance and is subject to recall at any time.

DECIMALS	FRACTIONS	TOLS.	ANGLES
.X ± .05	1/64		
.XX ± .01			0° - 30'
.XXX ± .005			

REQ'D	ITEM	PART NUMBER	DESCRIPTION	SYM.
LIST OF MATERIAL				
THE TECHNICAL MATERIEL CORP. MAMARONECK, NEW YORK				
GEAR, SPROCKET				

FINAL APPROVAL	DATE
<i>[Signature]</i>	9/2/75

MECH. DES.	DATE

ELECT. DES.	DATE

CHECKED	DATE
<i>[Signature]</i>	8-11-75

DRAWN	DATE
<i>[Signature]</i>	8-11-75

SIZE	CODE IDENT. NO.	DWG NO.	ISSUE
B	82679	GR 243	A

SCALE 1:1 SHEET OF