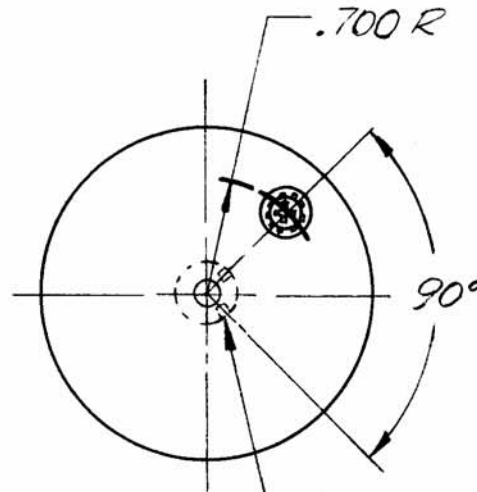
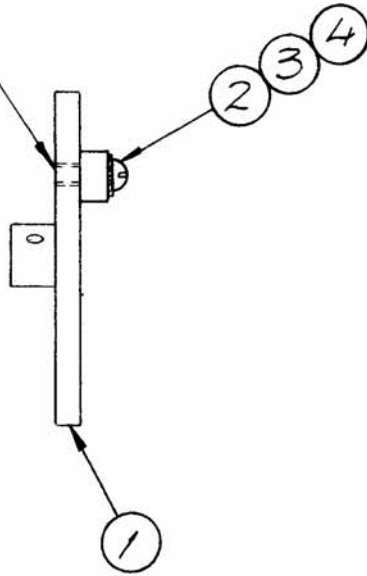


APPLICATION			REVISIONS						
QTY	MODEL USED ON	ASS'Y NO.	LTR	DESCRIPTION	DATE	E.M.N.NO	DRAFT	CHKD	APPD
1	HFTA 10 K	AX5113	X	EXP. RELEASE	3.31.70		GE		
			Ø	ORIG RELEASE FOR PROD	4/16/70		CV		
			A	REVISED	6/29/70	19917	KL- 986		FB/ 986

DRILL & TAP THRU #6-32
FOR IT. 3 IN LINE WITH
SUB-HOLE



* DRILL & TAP #4-40
(2 REQ.)

1	4	LWEO8MRN	WASHER, LOCK, EXTERNAL
1	3	SCBP0632BN5	SCREW MACHINE
1	2	TE-135-22	SPACER
1	1	GR 205-47	GEAR SPUR (MODIFIED)*

UNLESS OTHERWISE SPECIFIED
DIMENSIONS ARE IN INCHES
AND INCLUDE CHEMICALLY APPLIED
OR PLATED FINISHES

DECIMALS	FRACTIONS	TOLS.	ANGLES
.X ± .05	1/64		0° - 30'
.XX ± .01			
.XXX ± .005			

MATERIAL

FINISH

REQ'D	ITEM	PART NUMBER	DESCRIPTION	SYM.
LIST OF MATERIAL				
FINAL APPROVAL		DATE	THE TECHNICAL MATERIEL CORP. MAMARONECK, NEW YORK GEAR, ASSY.	
MECH. DES.		DATE		
ELECT. DES.		DATE		
CHECKED		DATE		
DRAWN		DATE		

NOTICE TO PERSONS RECEIVING THIS DRAWING
THE TECHNICAL MATERIEL CORPORATION claims proprietary right in the material disclosed hereon. This drawing is issued in confidence for engineering information only and may not be reproduced or used to manufacture anything shown hereon without permission from **THE TECHNICAL MATERIEL CORPORATION** to the user. This drawing is loaned for mutual assistance and is subject to recall at any time.

SIZE A	CODE IDENT. NO. 82679	DWG NO. GR 239	ISSUE A
SCALE		SHEET OF	