

THE CONTENTS OF THIS DRAWING ARE THE EXCLUSIVE PROPERTY OF THE TECHNICAL MATERIEL CORP. ITS UNAUTHORIZED USE OR REPRODUCTION IN WHOLE OR IN PART IS STRICTLY FORBIDDEN.

USED ON

GR-187

DATE

7-26-62

ASS'Y. NO.

MODEL

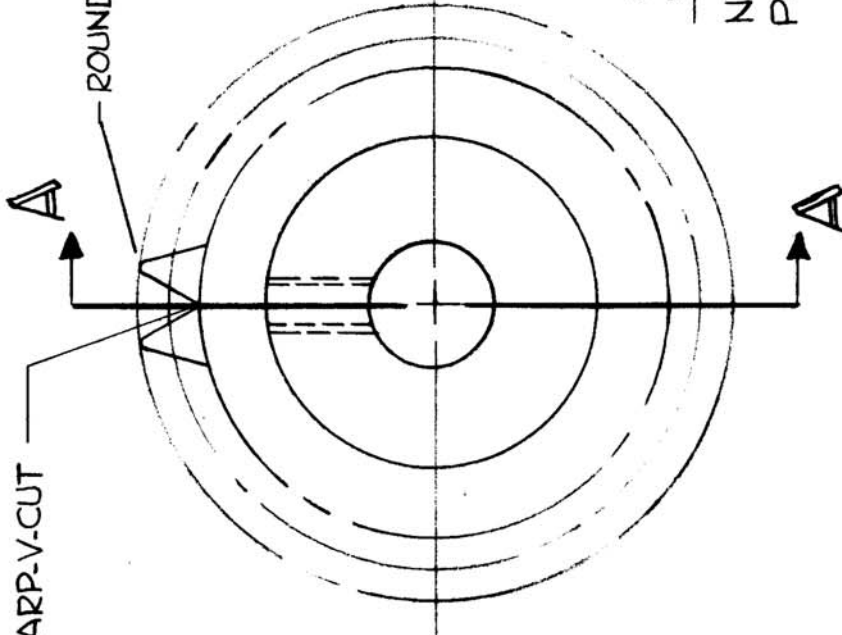
HR-1

REQ. PER UNIT

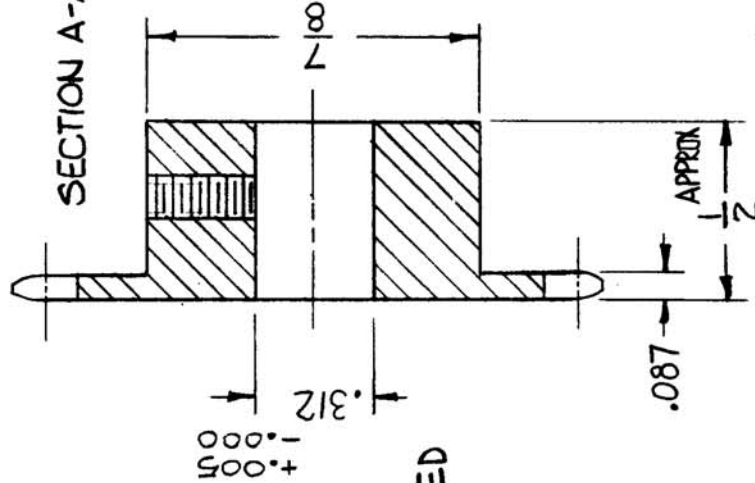
1

SHARP-V-CUT

ROUND TOP OF TEETH



SECTION A-A



NOTE  
SET SCREW SUPPLIED

SPECIFICATIONS

NO OF TEETH = 24  
PITCH DIA. = 1.41

( BOSTON GEAR CA24 MODIFIED AS PER TMC )

REQ. ITEM	PART NO.	DESCRIPTION	SYMBOL
		KRUY	
		THE TECHNICAL MATERIEL CORP. MAMARONECK, NEW YORK	
		STEEL STAINLESS	
		MATERIAL	
		#303	
		TYPE & TEMPER	
		S104 PASSIVATE	
		FINISH & SPEC. NO.	
		HEATTREAT. SPEC.	
		CHECKER	
		ENG. APP.	
		DRAFTS	
		CHECKER	
		ENG. APP.	
		DATE	
		CH. NO.	
		DRAFTS	
		CHECKER	
		ENG. APP.	
		SCALE: Do Not Scale	
		UNLESS OTHERWISE SPECIFIED: DIMENSIONS ARE IN INCHES	
		TOLERANCES ON FRAC. ± 1/64 DEC. ± .005 ANGLES ± 1/2°	
		REMOVE ALL BURRS AND SHARP EDGES	
		WILL BE CAUSE FOR REJECTION.	
		MAXIMUM ALLOWABLE TOLERANCES HAVE BEEN DETERMINED AND ANY DEVIATIONS	
		TYPE & TEMPER	
		HEATTREAT. SPEC.	
		CHECKER	
		ENG. APP.	
		DRAWN	
		CHECKED	
		FINAL APPROVAL	
		T.A.K.	
		MECH. DES. APP.	
		ELEC. DES. APP.	
		GR-187	