

THE CONTENTS OF THIS DRAWING ARE THE EXCLUSIVE PROPERTY OF THE TECHNICAL MATERIEL CORP. ITS UNAUTHORIZED USE OR REPRODUCTION IN WHOLE OR IN PART IS STRICTLY FORBIDDEN.

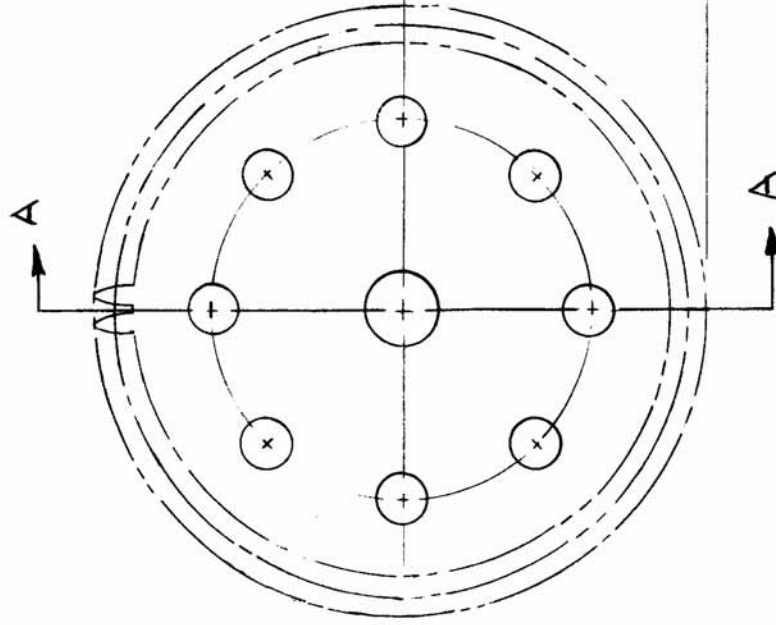
REQ. PER UNIT

MODEL
HER-1

USED ON
ASSY. NO.

DATE
7-26-62

GR-177



— SPECIFICATIONS —
 No. OF TEETH = 144
 DIAMETRAL PITCH = 48
 PITCH DIA. = 3.000
 PRESSURE ANGLE = 20°
 FACE = 1/8

SECTION "A-A"

STERLING INSTRUMENT (CAT. No S21-144)

REQ. ITEM	PART NO.	DESCRIPTION	SYMBOL
		KRUY	
		THE TECHNICAL MATERIEL CORP. MAMARONECK, NEW YORK	
		STAINLESS STEEL	
		303	
		G.D.L	
		TYPE & TEMPER	
		HEATTREAT.SPEC.	
		PASSIVATE S104	
		FINISH & SPEC. NO.	
		DRAWN	
		CHECKED	
		FINAL APPROVAL	
		777K.	
		ELEC. DES. APP. MECH. DES. APP.	
		GR-177	

UNLESS OTHERWISE SPECIFIED:
 DIMENSIONS ARE IN INCHES
 TOLERANCES ON
 FRAC. ± 1/64 DEC. ± 0.5 ANGLES ± 1/2°

SCALE:
 MAXIMUM ALLOWABLE TOLERANCES HAVE
 BEEN DETERMINED AND ANY DEVIATIONS
 WILL BE CAUSE FOR REJECTION.
 REMOVE ALL BURRS AND SHARP EDGES