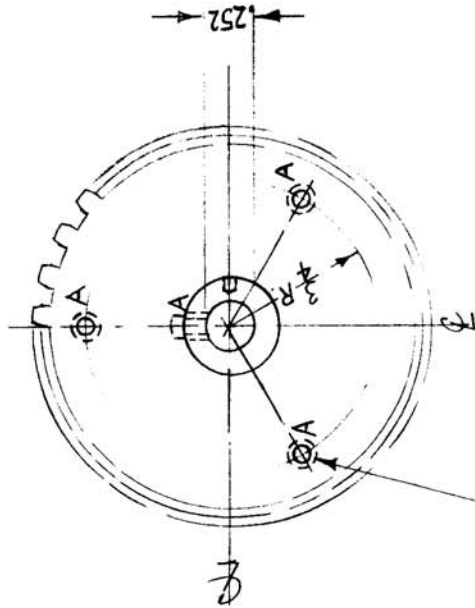


A-6-32 DRILL TAP 4 REQ
 B-#52 DRILL-SUB 1 REQ.
 (PAR WAY)



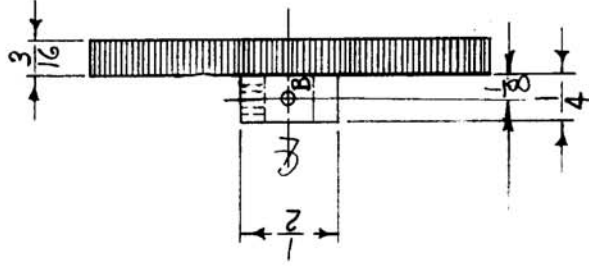
3 (3" HOLES) SPACED 120°
 APART ON 3/4" RADIUS.

PITCH DIA. 2.000
 PITCH 48
 NO. OF TEETH 96
 HUB DIA. .500
 HUB PROJ. .250
 BORE .252 ± .002
 FACE .187
 STYLE PLAIN
 PRESSURE 14 1/2°

REQ. PER UNIT	MODEL	USED ON	DATE
1	CHG-1	ASBY. NO.	9-6-60
1	CHG-2		
1	CHG-2A	A3591	

GR-159

C



REQ. ITEM	PART NO.	DESCRIPTION	SYMBOL
1	SLHC0632553	SET SCREW	
STOCK SIZE		THE TECHNICAL MATERIEL CORP. MAMARONECK, NEW YORK	
MATERIAL		GEAR DETENT	
1/2 H			
TYPE & TEMPER	HEAT TREAT. SPEC.	CHECKED	FINAL APPROVAL
		DRAWN	GR-159
FINISH & SPEC. NO.		ELEC. DES. APP. MECH. DES. APP.	

ISSUE ITEM	CHANGED FROM	DATE	CH. NO.	DRAFTS	CHECKER	ENG. APP.
C 1	-SUB (PARTWAY), TO BORE ADDED	12/29/65	15459	F.V.V.	J.P.	J.P.
B	CLERICAL CHANGES	8-24-64		A.B.		
A 1	Dim. 252 was .250	2-28-61	4285	EU	J.P.	J.P.

TOLERANCES	
DEC. DIM. ±	.0015
FRAC. DIM. ±	1/64
ANGULAR DIM. ±	

SCALE: FULL

MAXIMUM ALLOWABLE TOLERANCES HAVE BEEN DETERMINED AND ANY DEVIATIONS WILL BE CAUSE FOR REJECTION. REMOVE ALL BURRS AND SHARP EDGES