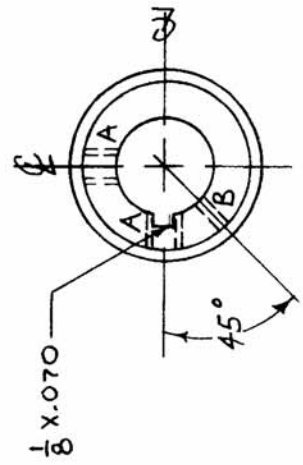
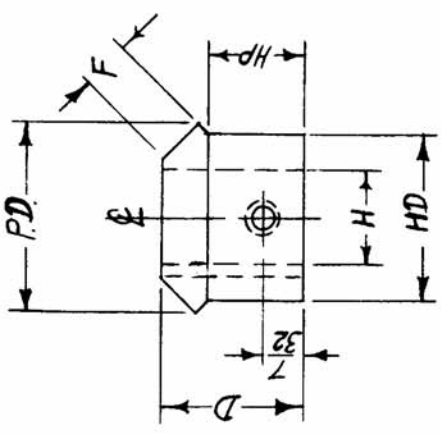


REQ. PER UNIT	1	USED ON	GR-155	A
MODEL	GPT-10K	ASSY. NO.		
DATE	8-1-60			

A ~ 8-32 TAP 2 REQ.
 B ~ .0635 DIA. 1 REQ.



- PD ~ PITCH DIAMETER 1.000
- F ~ FACE .19
- D ~ DIMENSION 47/64
- HD ~ HUB DIAMETER 7/8
- HP ~ HUB PROJECT 1/2 ±.001
- H ~ HOLE 1/2
- MD ~ DIMENSION 1/16

REF: BOSTON GEAR #L-124 Y (MODIFIED).

REQ. ITEM	PART NO.	DESCRIPTION	SYMBOL
		THE TECHNICAL MATERIEL CORP.	
		MAMARONECK, NEW YORK	
		MITER GEAR	
		STEEL	
		MATERIAL	
		HEAT TREAT. SPEC.	
		WICKEL PL .0003	
		FINISH & SPEC. NO.	
		ELEC. DES. APP MECH. DES. APP	
		DRAWN	FINAL APPROVAL
		CHECKED	GR-155
		ENG. APP.	A

SCALE: FULL
 MAXIMUM ALLOWABLE TOLERANCES HAVE BEEN DETERMINED AND ANY DEVIATIONS WILL BE CAUSE FOR REJECTION. REMOVE ALL BURRS AND SHARP EDGES

DEC. DIM. ± 1/16
 FRAC. DIM. ± 1/16
 ANGULAR DIM. ±