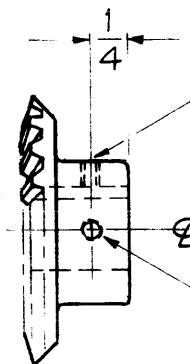


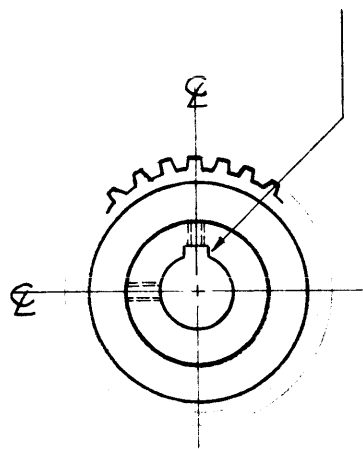
GR-150 A

GR-150-1

DRILL & TAP 8-32
2 REQ.

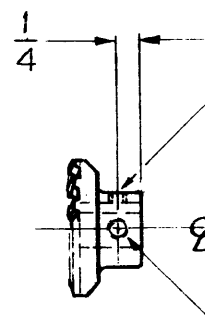


1/8 WIDE BY 1/16 DEEP
KEYWAY.

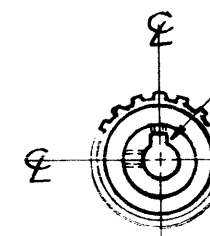


GR-150-2

DRILL & TAP 8-32
2 REQ.



1/8 WIDE BY 1/16
DEEP KEYWAY



NOTICE TO PERSONS RECEIVING THIS DRAWING

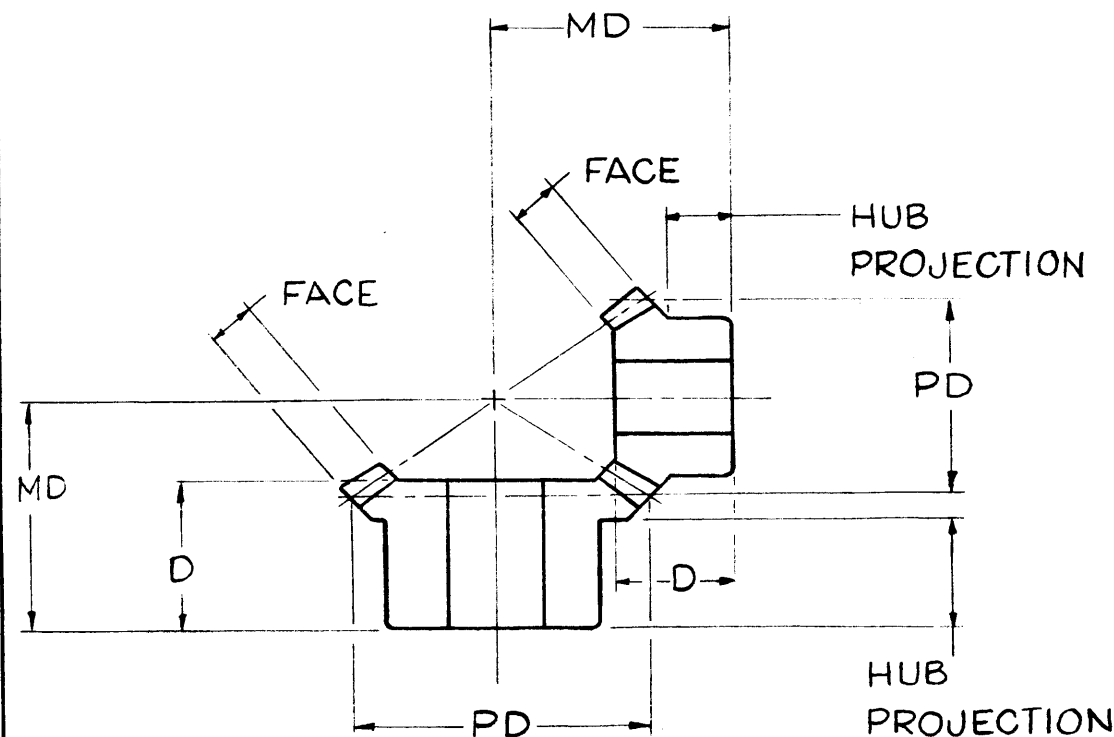
THE TECHNICAL MATERIEL CORPORATION claims proprietary right in the material disclosed hereon. This drawing is issued in confidence for engineering information only and may not be reproduced or used to manufacture anything shown hereon without permission from THE TECHNICAL MATERIEL CORPORATION to the user. This drawing is loaned for mutual assistance and is subject to recall at any time.

Property of:

THE TECHNICAL MATERIEL CORPORATION
MAMARONECK, NEW YORK

TMC PART NO.	MFG PART NO.	MAT'L	PITCH DIA.	PITCH	TEETH	FACE	HOLE	D DIM.	MD DIM.	HUB DIA.	HUB PROJ.
GR150-1	L146YG MODIFIED	STEEL	1.500	16	24	.25	1/2"	3/4"	1-3/16	1-1/8	9/16
GR150-2	L146YP MODIFIED	STEEL	1.000	16	16	.25	3/8"	47/64	1-1/4	13/16	7/16

NO LONGER USED
USE GR-141-1 & 2 FOR GPT-40K



REQ. ITEM	PART NO.	DESCRIPTION	SYMBOL
		THE TECHNICAL MATERIEL CORP. MAMARONECK, NEW YORK	
STOCK SIZE		GEAR AND BEVEL PINION	
MATERIAL		J.C. Biele	
TYPE & TEMPER	HEAT TREAT. SPEC.	DRAWN	CHECKED
FINISH & SPEC. NO.		ELEC. DES. APP.	MECH. DES. APP.

ISSUE	ITEM	CHANGED FROM	DATE	CH. NO.	DRAFTS	CHECKER	ENG. APP.
A	1	No Longer Used Note Added	3-2-61	4310	RU	JCB	[Signature]

TOLERANCES: SCALE: S-401-15 (L146Y)

MAXIMUM ALLOWABLE TOLERANCES HAVE BEEN DETERMINED AND ANY DEVIATIONS WILL BE CAUSE FOR REJECTION. REMOVE ALL BURRS AND SHARP EDGES

REQ. PER UNIT	MODEL	PROJECT NO.	ASS'Y. NO.	DATE
3SETS	GPT40K			2-18-60

USED ON