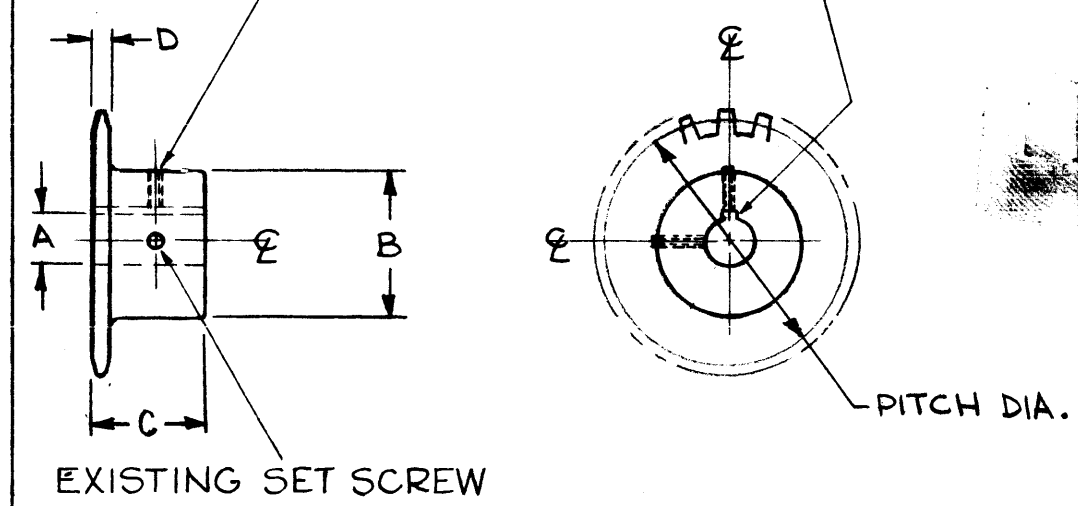


GR-148 E

TRC PART NO	MFG PART NO	TEETH	PITCH DIA	A	B	C	D	STYLE	REQ PER 40K
GR148-1	K-2520 (MOD.)	20	1.60	1/2	1-5/32	5/8	.110	PLAIN	5
↑ -2	K-2540 (MOD.)	40	3.19	1/2	1-3/8	5/8	.110	↑	1
↓ -3	K-2560 (MOD.)	60	4.78	1/2	1-3/8	5/8	.110	↓	NONE
GR148-4	K-2530 (MOD.)	30	2.39	1/2	1-3/8	5/8	.110	PLAIN	NONE

DRILL & TAP 8-32 ON SAME Q AS EXISTING SET SCREW.

+0.005
.125-.000
WIDE BY
1/16 DEEP
KEYWAY.



REPRODUCING THIS DRAWING

THE TECHNICAL MATERIEL CORPORATION claims in this material disclosed hereon. This is issued in confidence for engineering information only and may not be reproduced or used to manufacture anything shown hereon without permission from THE TECHNICAL MATERIEL CORPORATION to the user. This drawing is loaned for mutual assistance and is subject to recall at any time.

Property of:
THE TECHNICAL MATERIEL CORPORATION
MAMARONECK, NEW YORK

STANDARD DRAWING

ISSUE	ITEM	CHANGED FROM	DATE	CH. NO.	DRAFTS	CHECKER	ENG. APP.
E	1	COMPLETELY REVISED	7/2/62	11918	<i>J. C. Biele</i>	<i>J. C. Biele</i>	<i>J. C. Biele</i>
TOLERANCES			SCALE: S 401-15 (K2520, 40, 60)				
DEC. DIM. ±			MAXIMUM ALLOWABLE TOLERANCES HAVE BEEN DETERMINED AND ANY DEVIATIONS WILL BE CAUSE FOR REJECTION. REMOVE ALL BURRS AND SHARP EDGES				
FRAC. DIM. ±							
AN ULAR DIM. ±							

~	GPT 40K	
REQ. PER UNIT	MODEL	PROJ

REQ. ITEM	PART NO.	DESCRIPTION	SYMBOL
		THE TECHNICAL MATERIEL CORP. MAMARONECK, NEW YORK	
	STOCK SIZE		
	STEEL	SPROCKETS	
	MATERIAL		
		J.C. Biele	<i>J. C. Biele</i>
2-18-60	TYPE & TEMPER	HEAT TREAT. SPEC.	DRAWN
	5135 NICKEL PLATE	.001	CHECKED
	FINISH & SPEC. NO.	ELEC. DES. APP.	MECH. DES. APP.
			GR-148 E