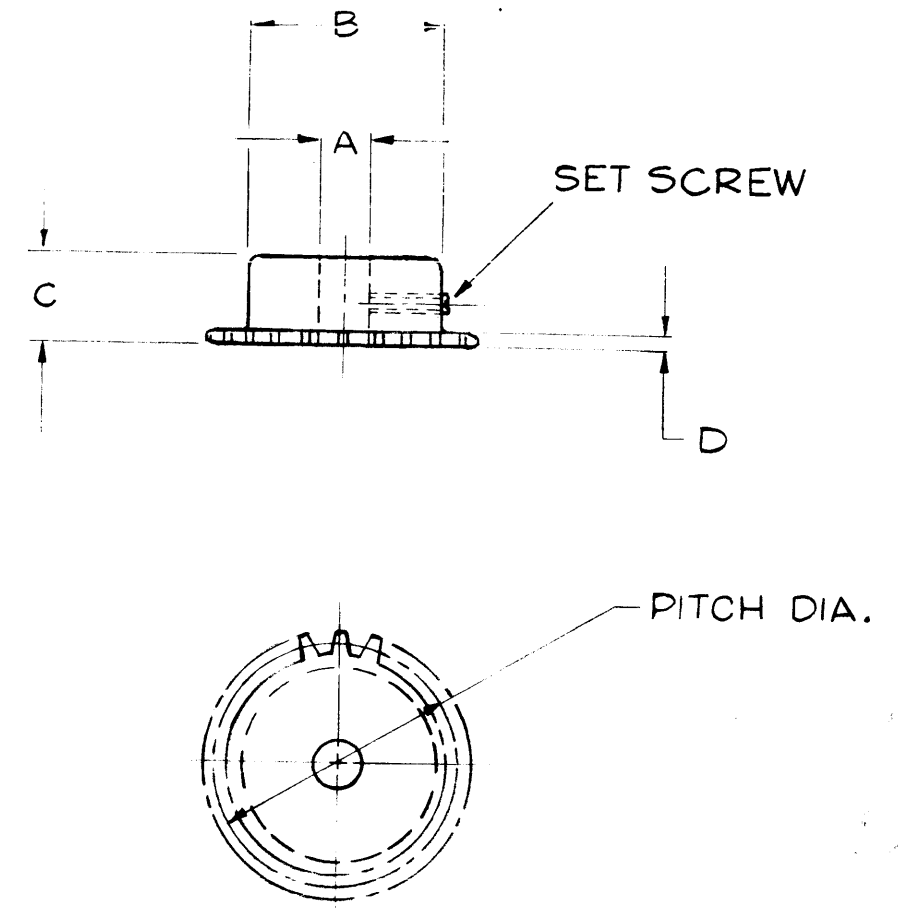


GR-147

TMC PART NO.	MFG. PART NO.	TEETH	PITCH DIA.	A	B	C	D	STYLE
GR-147-1	K-2510	10	.81	1/4	5/8*	5/8	.110	Plain
GR-147-2	K-2512	12	.97	5/16	3/4*	5/8	.110	Plain
GR-147-3	K-2515	15	1.20	5/16	3/4	5/8	.110	Plain
GR-147-4	K-2516	16	1.28	5/16	13/16	5/8	.110	Plain
GR-147-5	K-2517	17	1.36	5/16	29/32	5/8	.110	Plain
GR-147-6	K-2518	18	1.44	3/8	1"	5/8	.110	Plain
GR-147-7	K-2519	19	1.52	3/8	1-1/16	5/8	.110	Plain
GR-147-8	K-2520	20	1.60	3/8	1-5/32	5/8	.110	Plain
GR-147-9	K-2530	30	2.39	3/8	1-3/8	5/8	.110	Plain
GR-147-10	K-2536	36	2.87	1/2#	1-3/8	5/8	.110	Plain
GR-147-11	K-2540	40	3.19	1/2#	1-3/8	5/8	.110	Plain
GR-147-12	K-2548	48	3.82	1/2#	1-3/8	5/8	.110	Plain
GR-147-13	K-2554	54	4.30	1/2#	1-3/8	5/8	.110	Plain
GR-147-14	K-2560	60	4.78	1/2#	1-3/8	5/8	.110	Plain
GR-147-15	K-2572	72	5.73	1/2#	1-3/8	5/8	.110	Plain

\* Has recessed groove in hub for chain clearance  
 # This is maximum hole for these inserted hub sprockets



NOTICE TO PERSONS RECEIVING THIS DRAWING

THE TECHNICAL MATERIEL CORPORATION claims proprietary right in the material disclosed hereon. This drawing is issued in confidence for engineering information only and may not be reproduced or used to manufacture anything shown hereon without permission from THE TECHNICAL MATERIEL CORPORATION to the user. This drawing is loaned for mutual assistance and is subject to recall at any time.

Property of:  
 THE TECHNICAL MATERIEL CORPORATION  
 MAMARONECK, NEW YORK

ISSUE	ITEM	CHANGED FROM	DATE	CH. NO.	DRAFTS	CHECKER	ENG. APP.

TOLERANCES: DEC. DIM. ±, FRAC. DIM. ±, ANGULAR DIM. ±

SCALE: S401-15

MAXIMUM ALLOWABLE TOLERANCES HAVE BEEN DETERMINED AND ANY DEVIATIONS WILL BE CAUSE FOR REJECTION. REMOVE ALL BURRS AND SHARP EDGES

REQ. PER UNIT	MODEL	PROJECT NO.	ASS'Y. NO.	DATE
				2-18-60

REQ. ITEM	PART NO.	DESCRIPTION	SYMBOL
		THE TECHNICAL MATERIEL CORP. MAMARONECK, NEW YORK	
		STEEL	
		SPROCKET	
		J.C. Biele	