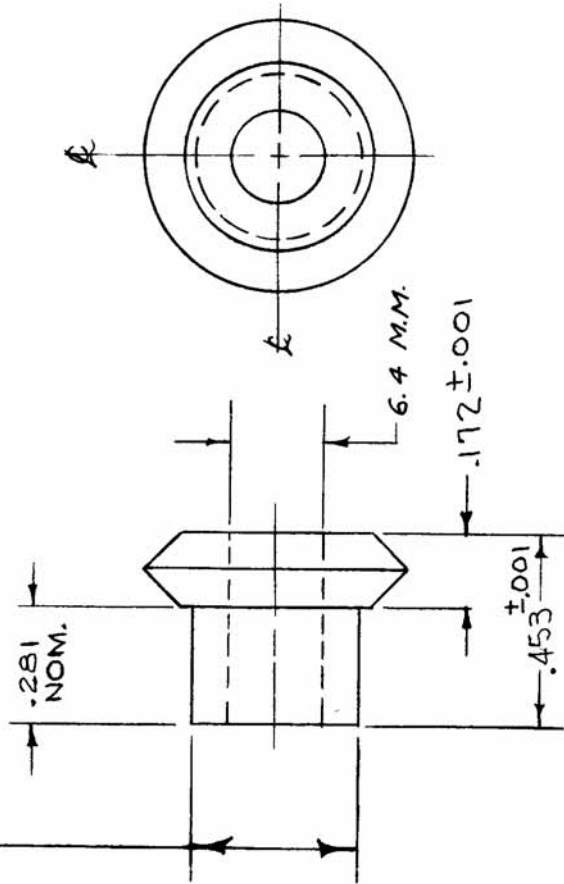


IF IT IS FOUND DESIRABLE TO CHANGE ANY TOLERANCE OR OTHER DETAIL SPECIFIED ON THIS DRAWING NOTIFY THE PURCHASER PROMPTLY.

MAXIMUM ALLOWABLE TOLERANCES HAVE BEEN DETERMINED AND DEVIATIONS WILL BE CAUSE FOR REJECTION. REMOVE ALL BURRS AND SHARP EDGES

TURN FOR TIGHT FIT OF COLLAR (SEE PM-335)



PRESSURE ANGLE - 20°
 PITCH DIA. - .600
 PITCH - 20
 TEETH - 12
 FACE - .12
 HOLE - 6.4 M.M. (.2519)D.
 HUB PROJ. - .281
 (COMMERCIAL CLASS 3 TOL.)

REQ. PER UNIT		USED ON		
MODEL	PROJECT NO.	ASSY. NO.	DATE	
VOX-1			2-25-55	
VOX-2			2-25-55	
PMO-2			2-1-56	
RTF			2-1-56	
RTF-2			11-10-58	

GR-117 C

REF: A-939 MITER GEAR ASSEMBLY

REQ. ITEM	PART NO.	DESCRIPTION	SYMBOL
		THE TECHNICAL MATERIEL CORP.	
		MAMARONECK, NEW YORK	
		GEAR, MITER	
DELIN			
MATERIAL			
TYPE & TEMPER			
HEAT TREAT. SPEC.			
FINISH & SPEC. NO.			

ISSUE ITEM	CHANGED FROM	DATE	CN. NO.	DRAFTS	CHECKER	ENG. APP.
C		10/11/63	10198	SPD	MMT	SPD
B		5/32 WAS 5/16	2	OSD	JAD	JAD
A		29/64 " 3/16"	1	RS.	OSD	NO

SCALE, DRILL, PUNCH, COMMERCIAL STOCK SIZES AND MANUFACTURERS TOLERANCES ARE NOT INCLUDED.

DEC. DIM. ± 1/64
 FRACTIONAL DIM. ± 1/64
 ANGULAR DIM. ±

DRAWN: P.B. 2-25-55
 CHECKED: JAD
 ELEC. DES. APP. [Signature]
 MECH. DES. APP. [Signature]