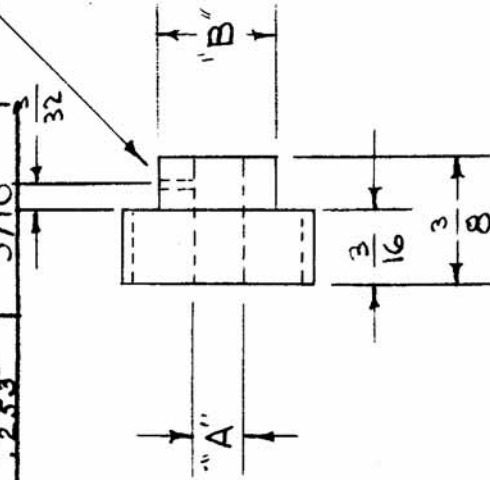


IF IT IS FOUND DESIRABLE TO CHANGE ANY TOLERANCE OR OTHER DETAIL SPECIFIED ON THIS DRAWING NOTIFY THE PURCHASER PROMPTLY.

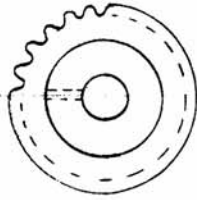
MAXIMUM ALLOWABLE TOLERANCES HAVE BEEN DETERMINED AND DEVIATIONS WILL BE CAUSE FOR REJECTION. REMOVE ALL BURRS AND SHARP EDGES

TMC P/NO.	DIMENSIONS	
	A	B
GR109-1	.186 .187	5/16
GR109-2	.250 .253	3/8
GR109-3	.259 .253	5/16

.0625
HOLE REQ.



AB PITCH
22 TEETH
1/2" PD
1 1/2° PRESSURE ANGLE
(COMMERCIAL CLASS 3 TOL.)



GR-109 D

REQ. PER UNIT
1

USED ON

MODEL	PROJECT NO.	ASSY. NO.	DATE
A-1000	101	A-422	9-24-51

THE TECHNICAL MATERIEL CORP.
MAMARONECK, NEW YORK

GEAR, PINION
(CHAIN GEAR ASSY.)

C.D.D. 3-11-54
DRAWN
ELEC. DES. APP.
MECH. DES. APP.
CHECKED
FINAL APPROVAL
GR-109 D

REQ. ITEM	PART NO.	DESCRIPTION	SYMBOL
#			
STAINLESS STEEL			
MATERIAL			
TYPE & TEMPER			
HEAT TREAT. SPEC.			
FINISH & SPEC. NO.			

ISSUE ITEM	CHANGED FROM	DATE	CN. NO.	DRAFTS CHECKER	ENG. APP.
D	GR109-3 ADDED TO TMC P/L	10-28-74	21482	GPV	KP
C	DIMS 'A' WAS .186/.187, 'B' WAS 5/16 - CHART ADD	3-7-74	21147	GBL	CL
B	EMO. VOK. TRF REF DELETED	6/8/56	2	JAB	WJ
A	CLASS 3 TOL. ADDED	5/18/50	1	PS	WJ
	REDRAWN - NO CHANGE	3/1/54		C.D.D.	WJ

TOLERANCES
SCALE #

DEC. DIM. ± .005
FRAC. DIM. ± 1/64
ANGULAR DIM. ±