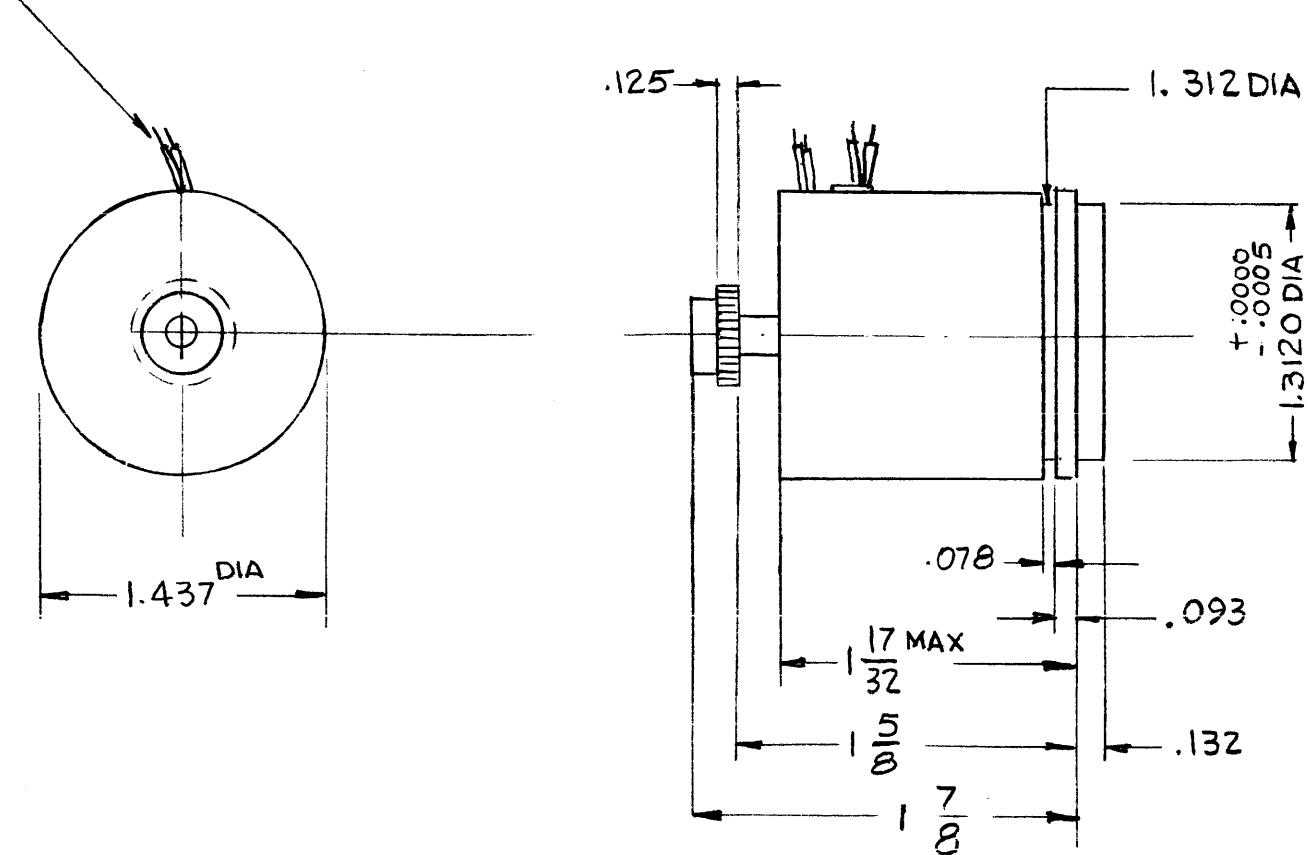
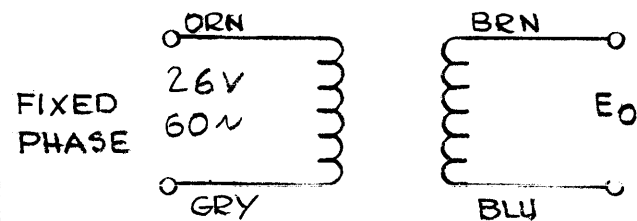


4 LEADS 10" LONG EACH



- SCHEMATIC -



STANDARD DRAWING

1	HFR-2	A3625
Q'TY./UNIT	MODEL USED ON	ASS'Y. NO.
SCALE	CODE	S401-116
DO NOT SCALE	C	(BT1407A-3)

THE CONTENTS OF THIS DRAWING ARE THE EXCLUSIVE PROPERTY OF THE TECHNICAL MATERIEL CORP. ITS UNAUTHORIZED USE OR REPRODUCTION IN WHOLE OR IN PART IS STRICTLY FORBIDDEN.

NOTES

GN100

REVISIONS

SYM	DESCRIPTION	DATE	E.M.N. NO.	DRAFT	CHKD	APPD
X	EXPER. RELEASE	3-2-65		G.D.L		
Ø	ORIGINAL RELEASE FOR PRODUCTION	3-5-65	Ø	PL		

- MECHANICAL SPECIFICATION -

SHAFT GEAR DATA :

- No. OF TEETH - 37
- DIAMETRAL PITCH - 120
- AGMA QUALITY CLASS - PREC. 1/D
- PITCH DIAMETER - .3083
- OUTSIDE DIAMETER - .3250
- PRESSURE ANGLE - 20°
- MATERIAL - 416 STAINLESS STEEL
- HARDNESS - RC 26-32

- ELECTRICAL SPECIFICATION -

MOTOR CONTROL :

- FREQUENCY, C.P.S. - 50/60
- SPEED, R.P.M. - 0-3600

60 CYCLE ELEC.CHARACTERISTICS : FIXED PHASE .

- VOLTAGE - 26V
- CURRENT - 0.121 AMPS
- POWER INPUT - 2.86 WATTS
- MEASURED AT STALL AT WINDING TEMP. OF 25°C

ADDITIONAL GENERATOR INFO. :

- OUTPUT GRADIENT, VOLTS 1000 R.P.M. - 1.0 MAX AT WINDING TEMP OF 25°C.
- NULL VOLTAGE, VOLTS (MAX R.M.S) - 0.015 OVER OPERATING TEMP. RANGE OF 0° TO 55°C.

REQ'D.	ITEM	PART NUMBER	DESCRIPTION	SYMBOL
--------	------	-------------	-------------	--------

J. ANGER

LIST OF MATERIAL

MATERIAL	+	THE TECHNICAL MATERIEL CORP. MAMARONECK, NEW YORK
FINISH	+	TITLE

GENERATOR, TACHOMETER

UNLESS OTHERWISE SPECIFIED DIMENSIONS ARE IN INCHES AND INCLUDE CHEMICALLY APPLIED OR PLATED FINISHES		DRAWN G.D.L	DATE 3-3-65	FINAL APPROVAL	DATE
DECIMALS .X ± .05 .XX ± .01 .XXX ± .005	TOLERANCES	CHECKED Anger	DATE 3/2/65	GN 100	Ø
FRACTIONS ± 1/64 ANGLES ± 0° 30'		ELECT. DES. J.E. Eaton	DATE 3/5/65		