

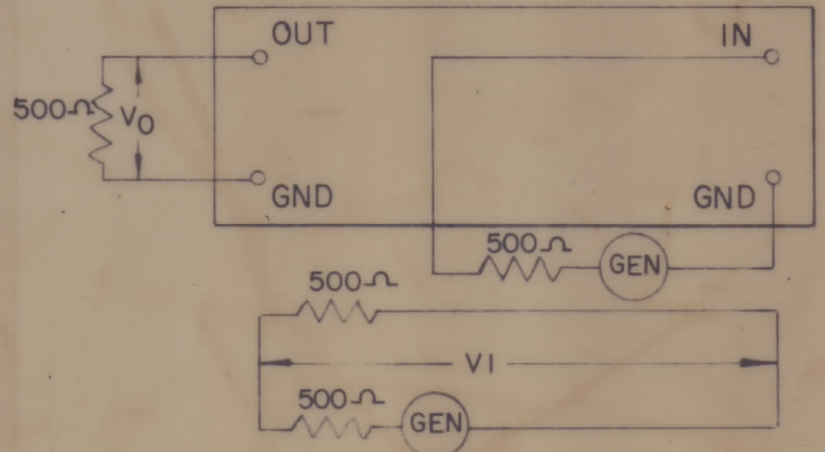
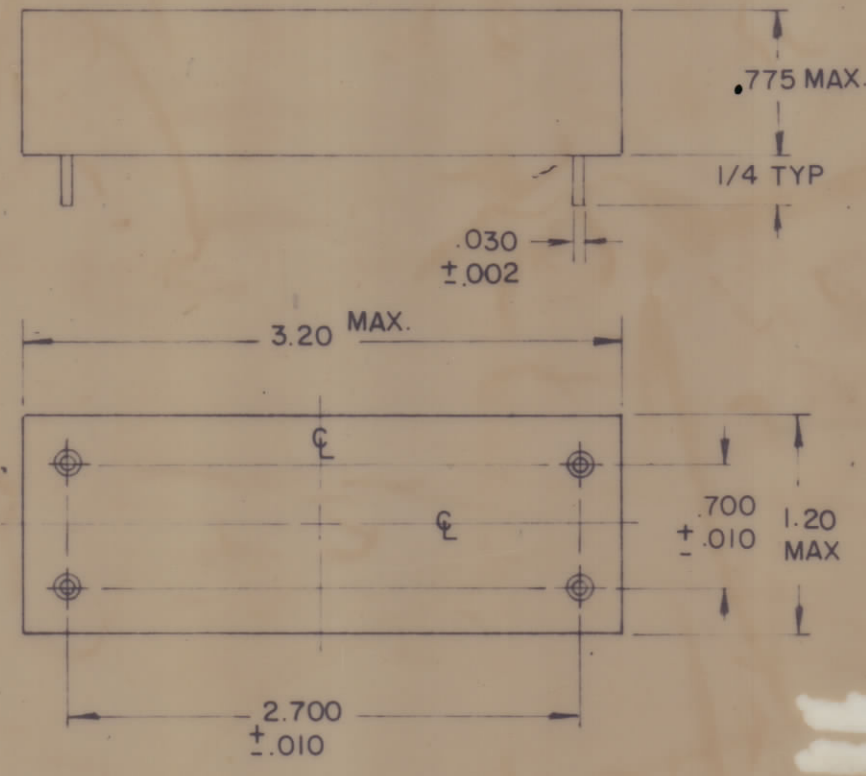
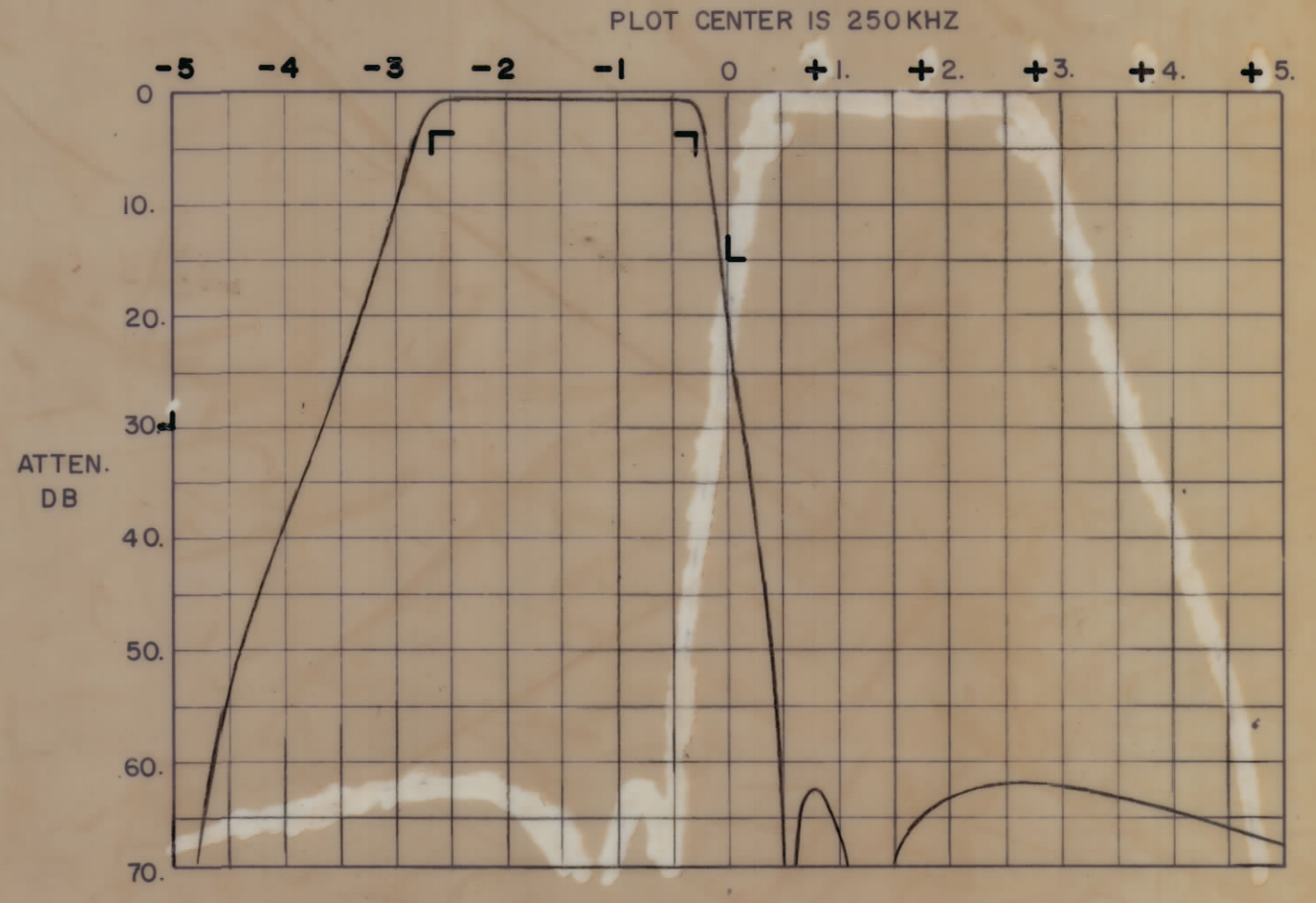
REVISIONS						
ZONE	LTR	DESCRIPTION	DATE	E.M.N.NO	DRAFT	CHKD
	Ø	ORIGINAL RELEASE FOR PRODUCTION	11/5/73		DY	

**SPECIFICATIONS**

3db POINTS:  $\Delta$  MIN  $f_c - 300\text{Hz}$   
 $\Delta$  MIN  $f_c - 2700\text{Hz}$   
 CARRIER FREQ( $f_c$ ): 250KHz  
 CARRIER SUPPRESSION: -15db MIN  
 UNWANTED SIDEBAND: -55db MIN.  
 OUTBOARD -30db POINT:  $\Delta$   $f_c - 5000\text{Hz}$   
 PASSBAND RIPPLE:  $\leq 3.0\text{db}$   
 INSERTION LOSS: 5.0db  $\pm 1.0\text{db}$   
 SOURCE & LOAD  $\geq 500 \Omega \pm 5\%$   
 OPERATING TEMP. RANGE: 0° TO +50°C

**FX 302  
LSB FILTER**

LETTERING APPROX. SIZE SHOWN BLACK GOTHIC



QTY. REQ.	ITEM	PART NO.	DESCRIPTION	SYMBOL
F BUDETTI LIST OF MATERIAL				
FINAL APPROVAL		DATE	THE TECHNICAL MATERIEL CORP.	
MECH. DES		DATE	MAMARONECK, NEW YORK	
ELECT. DES		DATE	<b>FILTER LOWER SIDEBAND 3 KHZ</b>	
CHECKED		DATE		
DRAWN		DATE		
MATERIAL			SIZE	CODE IDENT. NO.
FINISH			C	82679
			DWG. NO. <b>FX 302</b>	
			SCALE	SHEET
			N/T	OF

GPR 110		
QTY / UNIT	MODEL USED ON	ASS'Y NO.
APPLICATION		
CODE		
NOTICE TO PERSONS RECEIVING THIS DRAWING		
THE TECHNICAL MATERIEL CORPORATION claims proprietary right in the material disclosed hereon. This drawing is issued in confidence for engineering information only and may not be reproduced or used to manufacture anything shown hereon without permission from THE TECHNICAL MATERIEL CORPORATION to the user. This drawing is loaned for mutual assistance and is subject to recall at any time.		

FX 302 Ø B

A