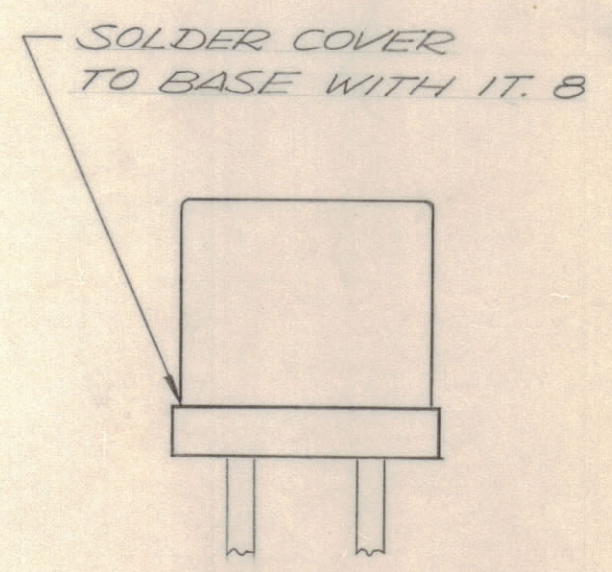
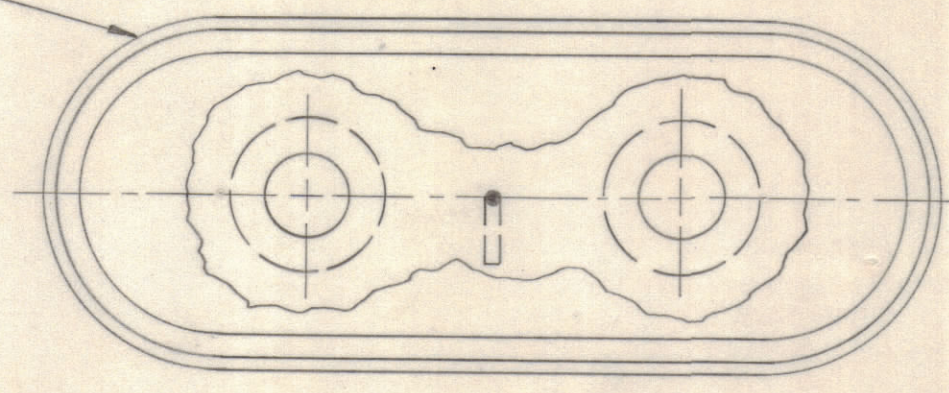
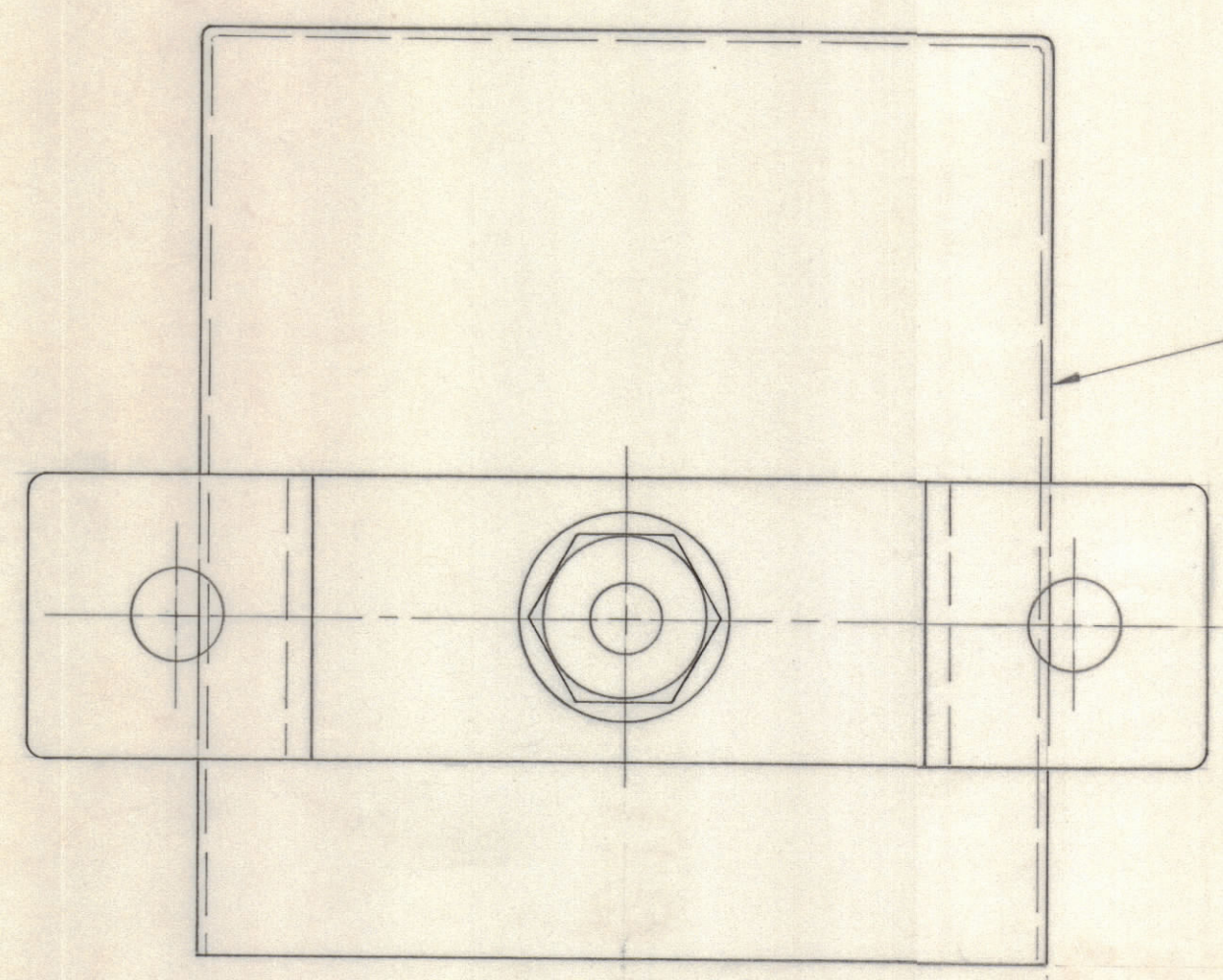
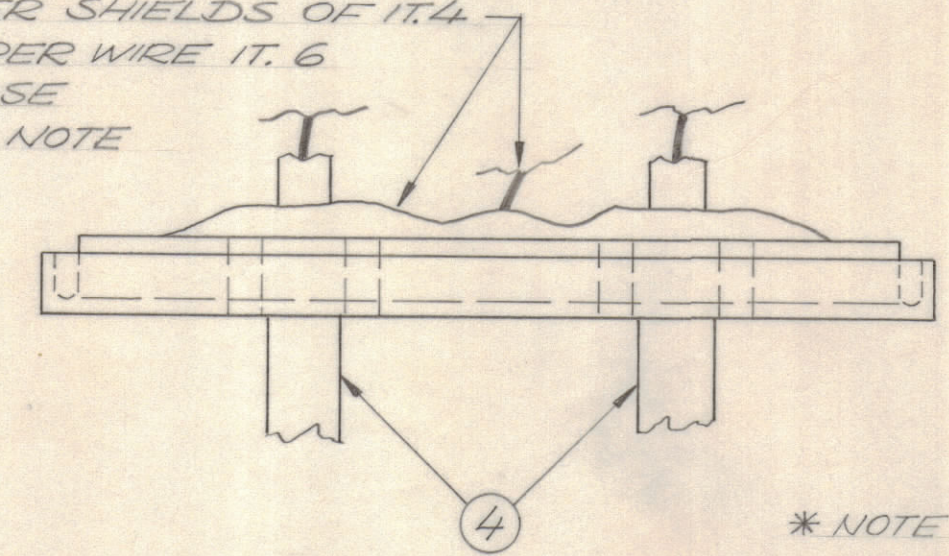


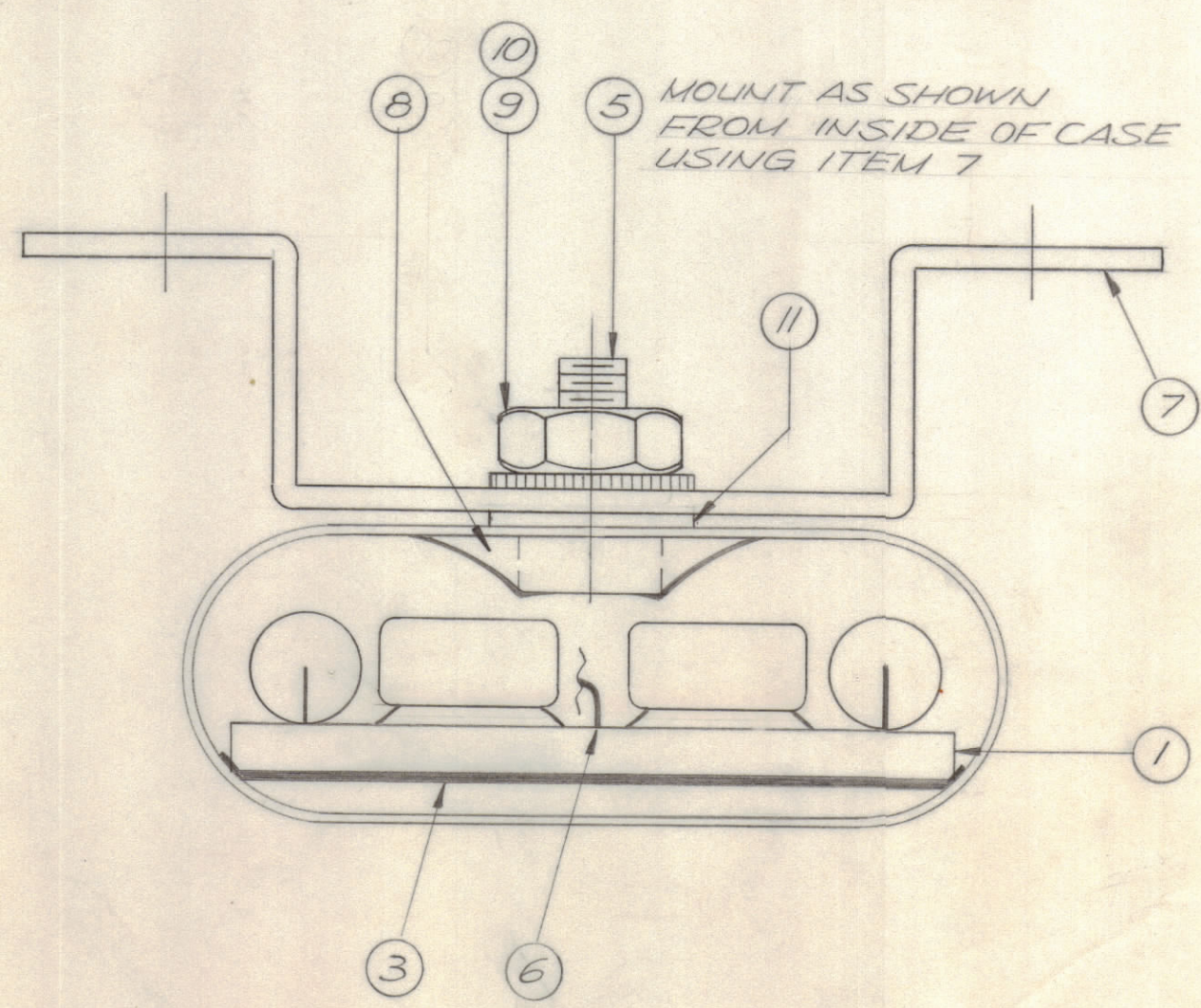
REVISIONS					DATE	APPROVED
E.M.N.NO	DRAFT	CHKD	ZONE	LTR	DESCRIPTION	
	KH			X	EXP. RELEASE	6/3/69
	GE			B	ORIGINAL RELEASE FOR PROD.	6-25-69 <i>fu</i>



SOLDER SHIELDS OF IT. 4
JUMPER WIRE IT. 6
TO BASE
SEE * NOTE



* NOTE:
REMOVE ALL SHARP WIRE ENDS & SOLDER
POINTS TO PREVENT SHORTING TO CAN.



MOUNT AS SHOWN
FROM INSIDE OF CASE
USING ITEM 7

QTY. REQ.	ITEM	PART NO.	DESCRIPTION	SYMBOL
1	11	FW04 MRN	WASHER, FLAT	
1	10	LWE04 MRN	WASHER, LOCK EXTERNAL	
1	9	NTH0440BNB	NUT, HEXAGON	
X	8	BS 100	SOLDER, TIN ALLOY	
1	7	MS 5146 - 10	BRACKET, TIEDOWN	
X	6	MWC 22(7) UO	WIRE, INS.	
1	5	SCPP0440BN5	SCREW, MACHINE	
X	4	RG 188/U	CABLE, COAXIAL	
1	3	PX 397 - 9	INS., TEFLON	
1	2	BX 230	CAN ASSY.	
1	1	A 4776	P. C. ASSY.	

LIST OF MATERIAL

THE TECHNICAL MATERIEL CORP.
MAMARONECK, NEW YORK

LOW PASS FILTER ASSEMBLY

HERR-4-A14		
GPR-10-A18		
QTY / UNIT	MODEL USED ON	ASS'Y NO.
APPLICATION		
CODE		
<small>NOTICE TO PERSONS RECEIVING THIS DRAWING</small> <small>THE TECHNICAL MATERIEL CORPORATION claims proprietary right in the material disclosed hereon. This drawing is issued in confidence for engineering information only and may not be reproduced or used to manufacture anything shown hereon without permission from THE TECHNICAL MATERIEL CORPORATION to the user. This drawing is loaned for mutual assistance and is subject to recall at any time.</small>		

UNLESS OTHERWISE SPECIFIED DIMENSIONS ARE IN INCHES AND INCLUDE CHEMICALLY APPLIED OR PLATED FINISHES	FINAL APPROVAL <i>[Signature]</i> DATE 6/25/69
TOLERANCES ON	MECH. DES. <i>[Signature]</i> DATE 6-24-69
DECIMALS	ELECT. DES. DATE
X ± .05	CHECKED <i>[Signature]</i> DATE 6/3/69
.XX ± .01	DRAWN <i>[Signature]</i> DATE 6/3/69
.XXX ± .005	
FRACTIONS	
± 1/64	
ANGLES	
± 0° - 30°	
MATERIAL	
FINISH	

SIZE	CODE	IDENT NO.	DWG NO.	ISSUE
C	82679		FX 297	Ø
SCALE 4:1		SHEET OF		