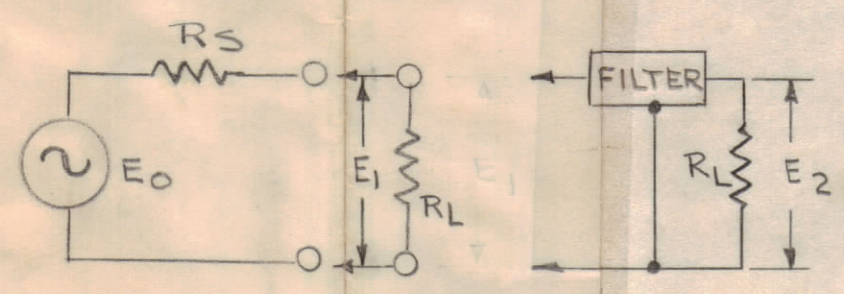
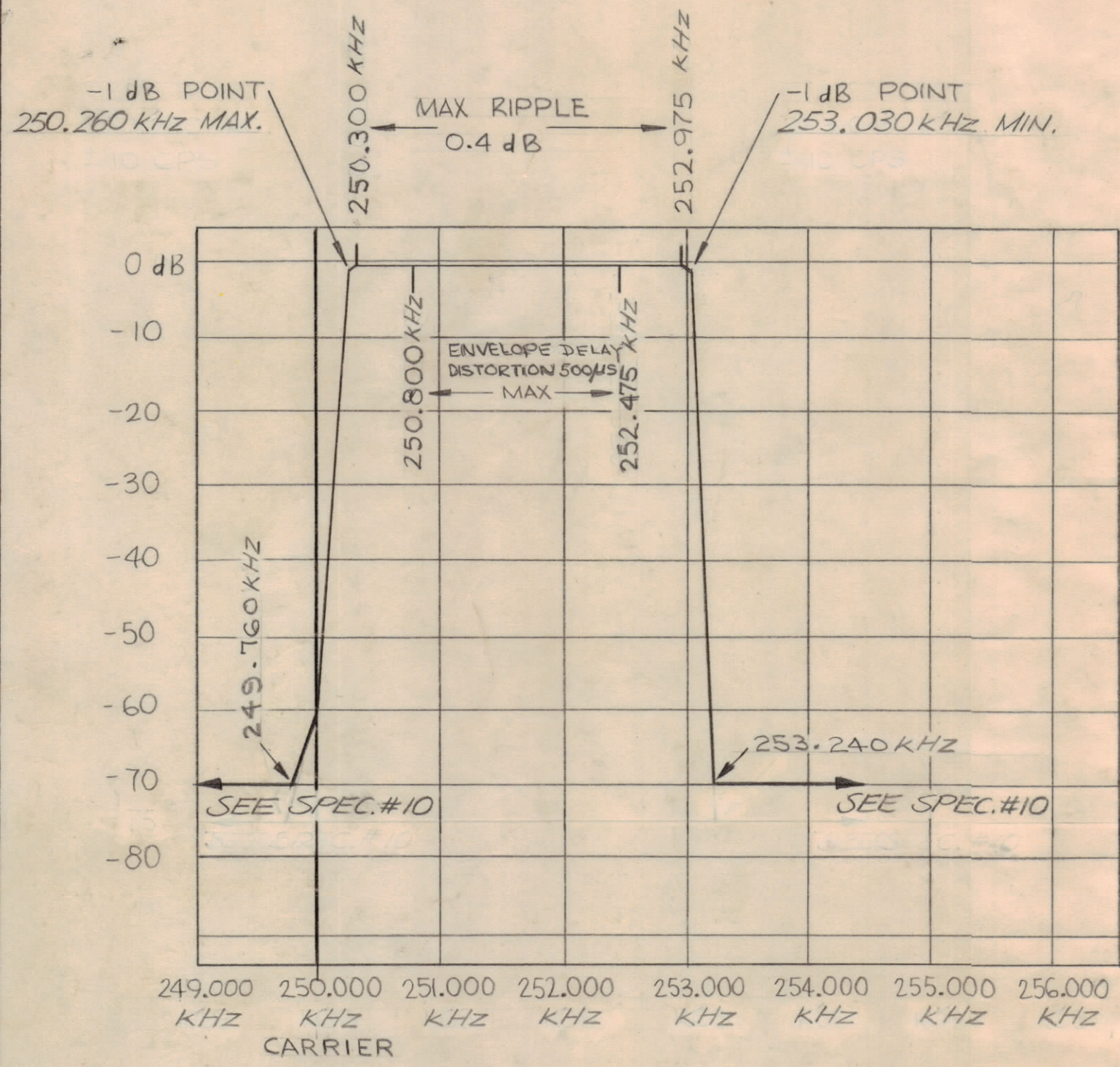


REVISIONS							
SYM	ZONE	DESCRIPTION	DATE	E.M.N.O.	DRAFT	CHKD	APPD
X		EXPERIMENTAL RELEASE	4/2/69	X	KH	JD	
XI		NOTE 10 ON SPEC REVISED	5/6/69	XI	CV	JD	
Ø		ORIGINAL RELEASE FOR PRODUCTION	5/8/69		QD		
A		REV NOTE 6, DELETE -75db ON CHART	2-23-70	19758	KD		HO O.P. KH



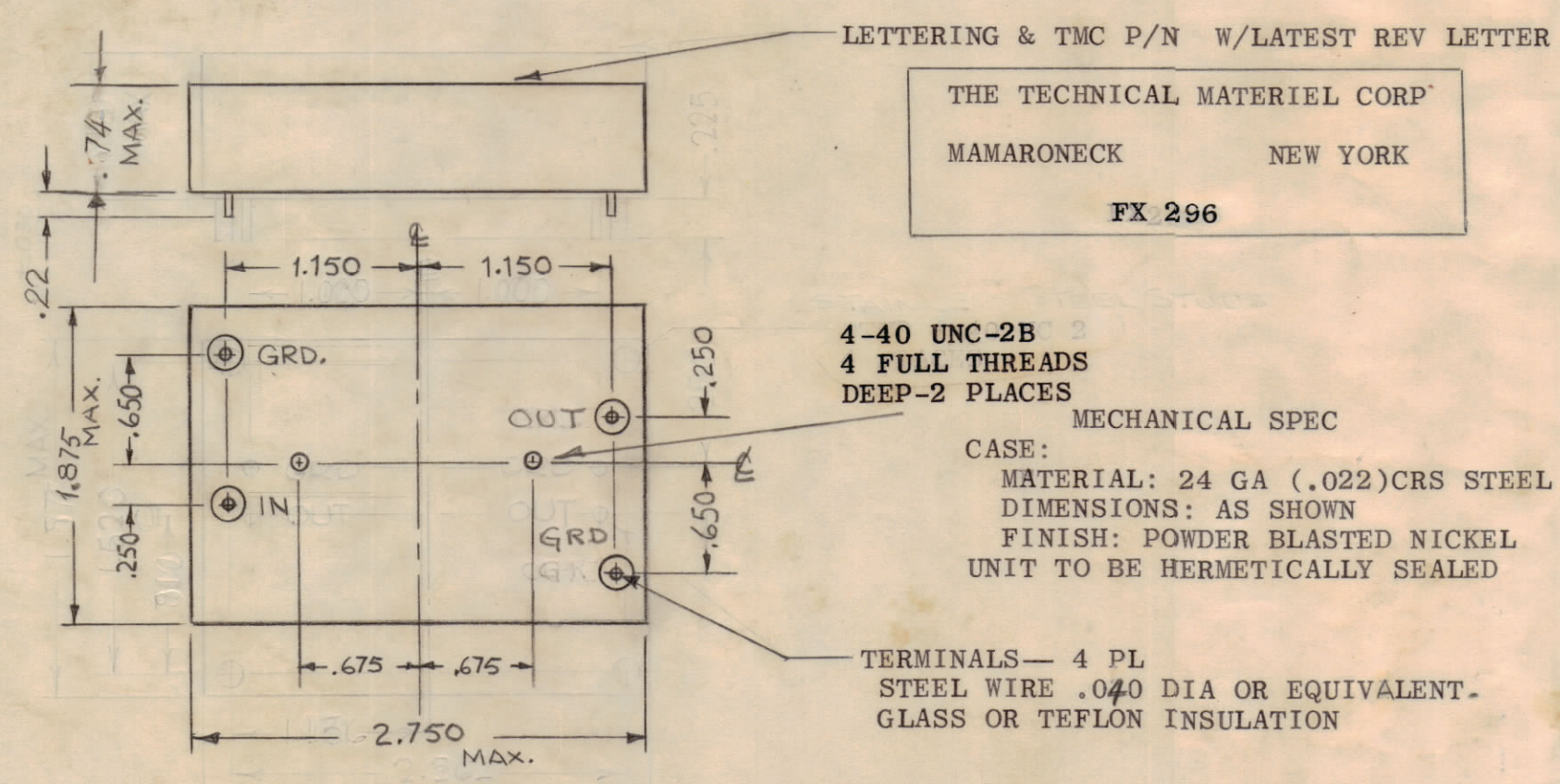
SPECIFICATIONS

1. TYPE: INNER, UPPER SIDEBAND
2. dB MEASUREMENTS: ALL dB MEASUREMENTS ARE RELATIVE TO MAXIMUM SIGNAL RESPONSE IN THE PASSBAND
3. CARRIER FREQUENCY: 250 kHz
4. CARRIER SUPPRESSION: AT LEAST 60 dB
5. -1dB POINTS: 250.260kHz MAX AND 253.030 kHz MIN
6. -70dB POINTS: NOT LOWER THAN 249.760 kHz AND NOT HIGHER THAT 253.500 kHz
7. INSERTION LOSS 4 dB MAX
8. SOURCE AND LOAD IMPEDANCE: 500 ±5% OHMS
9. RIPPLE: 0.4 dB MAX BETWEEN 250.300kHz AND 252.975kHz
10. ALL SPURIOUS RESPONSES AT LEAST 65 dB DOWN FROM 200kHz TO 300kHz
11. OPERATING TEMPERATURE: 0° TO 65°C
12. MAX. ENVELOPE DELAY DISTORTION 500 µS BETWEEN 250.800 kHz AND 252.475 kHz WHEN TESTED WITH CORRESPONDING EQUALIZER
13. THIRD ORDER IN-BAND INTERMODULATION DISTORTION WILL BE AT LEAST 65 DB DOWN FROM THE REFERENCE LEVEL OF EITHER OF TWO EQUAL 30 mv TONES IN THE FILTER PASSBAND, SELECTED IN A MANNER SUCH THAT THE THIRD ORDER PRODUCT FALLS IN THE FILTER PASSBAND.
14. MAXIMUM SIGNAL INPUT: 3 VOLTS rms.
15. NON-OPERATING TEMPERATURE RANGE -62°C TO +75°C
16. PEAK SHOCK CAPABILITY: 20G WITHIN A PERIOD OF 10 MILLISECONDS APPLIED ALONG THREE MUTUALLY PERPENDICULAR AXES.
17. VIBRATION CAPABILITY: 5 Hz TO 50 Hz AT AN AMPLITUDE OF 1.3G.

NOTE: 1. CHANNEL DESIGNATION REFERS TO 250 KCS. FURTHER SIDEBAND INVERSIONS MUST BE TAKEN INTO ACCOUNT IN DETERMINING THE FINAL CHANNEL DESIGNATION

2. INSERTION LOSS IS DEFINED AS $20 \log A$, WHERE $A = |E_1|/|E_2|$, R_S = SOURCE IMPEDANCE, R_L = LOAD IMP. SEE SKETCH. E_0 IS FIXED AT ANY FREQUENCY IN THE PASSBAND OF THE FILTER.

MARKING PROCESS: AS PER TMC SPECIFICATION S727 LETTERING: 1/8 HIGH BLACK GOTHIC, AS SHOWN



LETTERING & TMC P/N W/LATEST REV LETTER

THE TECHNICAL MATERIEL CORP
MAMARONECK NEW YORK
FX 296

4-40 UNC-2B
4 FULL THREADS
DEEP-2 PLACES

MECHANICAL SPEC

CASE:
MATERIAL: 24 GA (.022)CRS STEEL
DIMENSIONS: AS SHOWN
FINISH: POWDER BLASTED NICKEL
UNIT TO BE HERMETICALLY SEALED

TERMINALS— 4 PL
STEEL WIRE .040 DIA OR EQUIVALENT.
GLASS OR TEFLON INSULATION

MAXIMUM ALLOWABLE TOLERANCES HAVE BEEN DETERMINED AND ANY DEVIATIONS WILL BE CAUSE FOR REJECTION.

REF.: MSAR - 5

QTY REQ	ITEM	PART NO.	DESCRIPTION	SYMBOL
BILL OF MATERIAL				
THE TECHNICAL MATERIEL CORP. MAMARONECK, NEW YORK				
BANDPASS FILTER CHANNEL A1				
UNLESS OTHERWISE SPECIFIED DIMENSIONS ARE IN INCHES TOLERANCES ON FRACTIONS DECIMALS ANGLES ±1/64 ±.005 ±1/2°		FINAD APPROVAL <i>[Signature]</i>	DATE 5/8/69	
		MECH. DES.	DATE	
		ELECT. DES.	DATE	
MATERIAL		CHECKED <i>[Signature]</i>	DATE 4-16-69	
		DRAWN K.H.	DATE 4/2/69	
FINISH		APPROVED FOR BUSHIPS	CODE 82679	SIZE C
		CONTRACT NO.	DWG. NO. FX 296	ISSUE A
			SCALE	SHEET OF