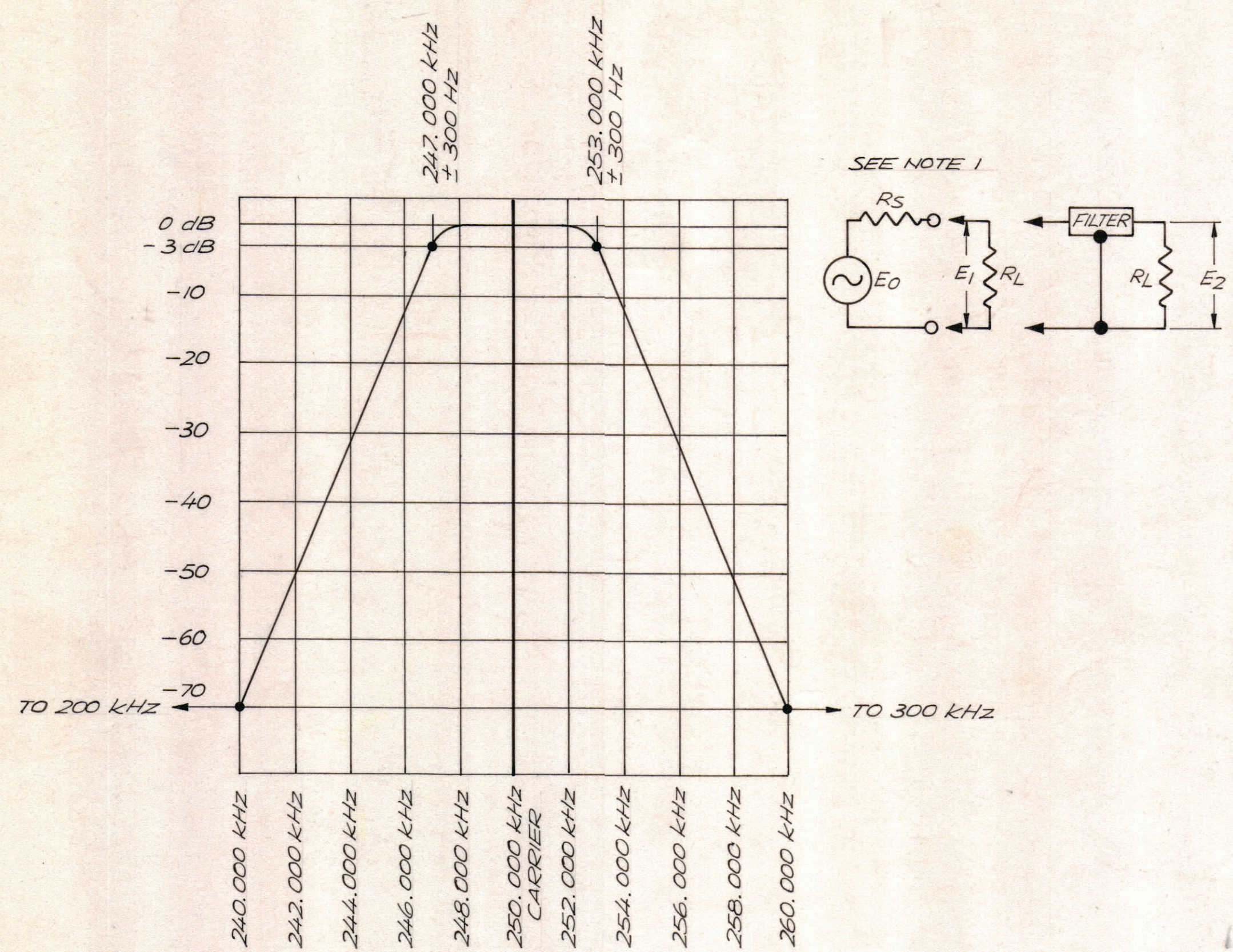


REVISIONS						
ZONE	LTR	DESCRIPTION	DATE	E.M.N.NO	DRAFT	CHKD APPD
	X	EXP. RELEASE	4/7/69	X	K.H.	F.S.
	X1	NO. 7 ON SPECIFICATIONS REVISED	5/8/69	X1	C.V.	F.S.
	Ø	ORIGINAL RELEASE FOR PRODUCTION	5/8/69		C.V.	

SPECIFICATIONS

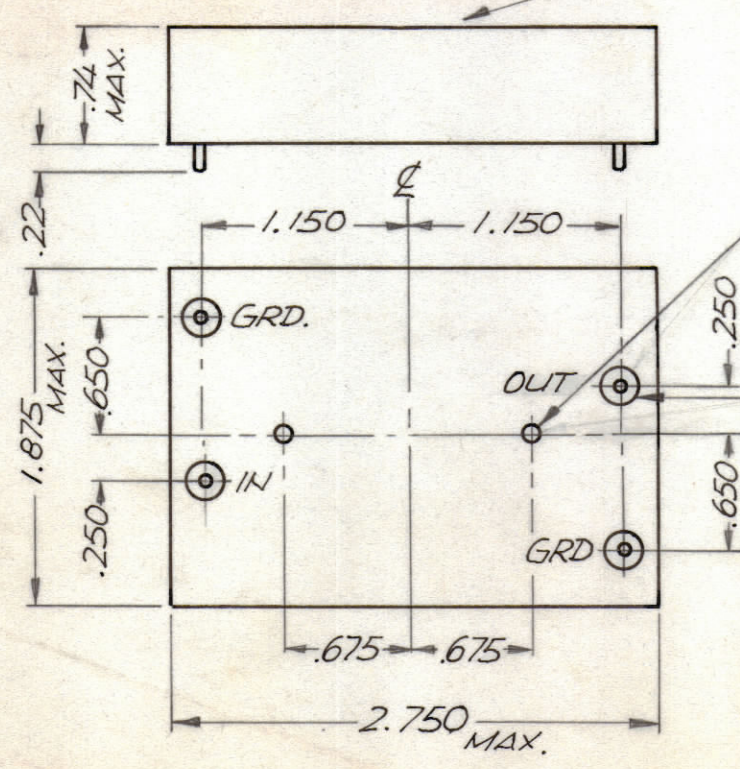
1. TYPE: SYMMETRICAL, 6 Kc BANDWIDTH
 2. dB MEASUREMENTS: ALL dB MEASUREMENTS ARE RELATIVE TO MAXIMUM SIGNAL RESPONSE IN THE PASSBAND
 3. -3dB POINTS: 247.000 kHz ±300 Hz AND 253.000 kHz ±300 Hz
 4. -70dB POINTS: NOT LOWER THAN 240.000 kHz AND NOT HIGHER THAN 260.000 kHz
 5. INSERTION LOSS 6dB MAX
 6. SOURCE AND LOAD IMPEDANCE: 500 ±50 OHMS
 7. ALL SPURIOUS RESPONSES AT LEAST 65dB DOWN FROM 200 kHz TO 300 kHz AND 250.000 kHz; AT LEAST 60dB DOWN FROM 300 kHz TO 200 kHz
 8. OPERATING TEMPERATURE: 0° TO 65°C
 9. THIRD ORDER, IN-BAND INTERMODULATION DISTORTION WILL BE AT LEAST 65dB DOWN FROM THE REFERENCE LEVEL OF EITHER OF TWO EQUAL 100 mv TONES IN THE FILTER PASSBAND, SELECTED IN A MANNER SUCH THAT THE THIRD ORDER PRODUCT FALLS IN THE FILTER PASSBAND.
 10. MAXIMUM SIGNAL INPUT: 3 VOLTS rms
 11. NON-OPERATING TEMPERATURE RANGE: -62°C TO +75°C
 12. PEAK SHOCK CAPABILITY: 20 G WITHIN A PERIOD OF 10 MILLISECONDS APPLIED ALONG THREE MUTUALLY PERPENDICULAR AXES
 13. VIBRATION CAPABILITY: 5 Hz TO 50 Hz AT AN AMPLITUDE OF 1.3G
 14. RIPPLE: 0.5dB MAXIMUM BETWEEN 248.500 kHz & 251.500 kHz
- NOTE 1: INSERTION LOSS IS DEFINED AS 20 LOG A, WHERE $A = \frac{E_1}{E_2}$
 R_s = SOURCE IMPEDANCE E_0 IS FIXED IN THE PASSBAND OF THE FILTER
- MARKING PROCESS: AS PER TMC SPECIFICATION S727
 LETTERING: 1/8 HIGH BLACK GOTHIC, LOCATED AS SHOWN



LETTERING & TMC P/N WITH LATEST REV LETTER

THE TECHNICAL MATERIEL CORP.
 MAMARONECK NEW YORK
 FX294

MECHANICAL SPEC
 CASE: MATERIAL: 24 GA (.022) CRS STEEL
 DIMENSIONS: AS SHOWN
 FINISH: POWDER BLASTED NICKEL
 MARKING: AS INDICATED
 UNIT TO BE HERMETICALLY SEALED



4-40 UNC-2B
 4 FULL THREADS
 DEEP-2 PLACES

TERMINALS 4 PL
 STEEL WIRE .040 DIA OR EQUIVALENT
 GLASS OR TEFLON INSULATION

QTY / UNIT	MSAR-5	MODEL USED ON	ASS'Y NO.
APPLICATION			
CODE			

NOTICE TO PERSONS RECEIVING THIS DRAWING
 THE TECHNICAL MATERIEL CORPORATION claims proprietary right in the material disclosed hereon. This drawing is issued in confidence for engineering information only and may not be reproduced or used to manufacture anything shown hereon without permission from THE TECHNICAL MATERIEL CORPORATION to the user. This drawing is loaned for mutual assistance and is subject to recall at any time.

REF: MSAR-5

QTY. REQ.	ITEM	PART NO.	DESCRIPTION	SYMBOL
LIST OF MATERIAL				
THE TECHNICAL MATERIEL CORP. MAMARONECK, NEW YORK				
BANDPASS FILTER, 6 KC SYMMETRICAL				
FINAL APPROVAL <i>[Signature]</i>		DATE 5/8/69		
MECH. DES.		DATE		
ELECT. DES.		DATE		
CHECKED <i>[Signature]</i>		DATE 4/15/69		
DRAWN <i>[Signature]</i>		DATE 4/7/69		
SIZE	CODE IDENT.NO.	DWG NO.	ISSUE	
C	82679	FX 294	Ø	
SCALE				SHEET OF

FX 294