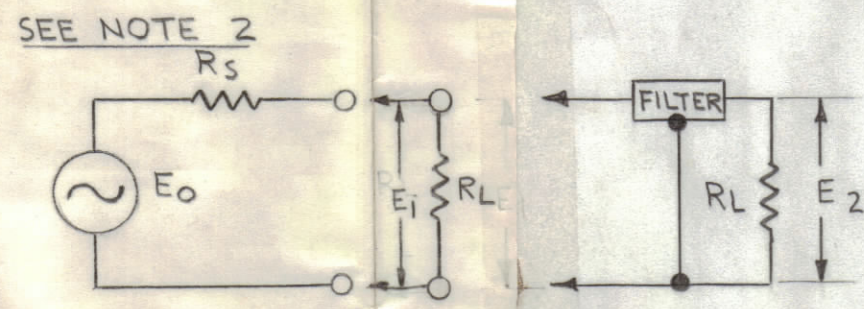
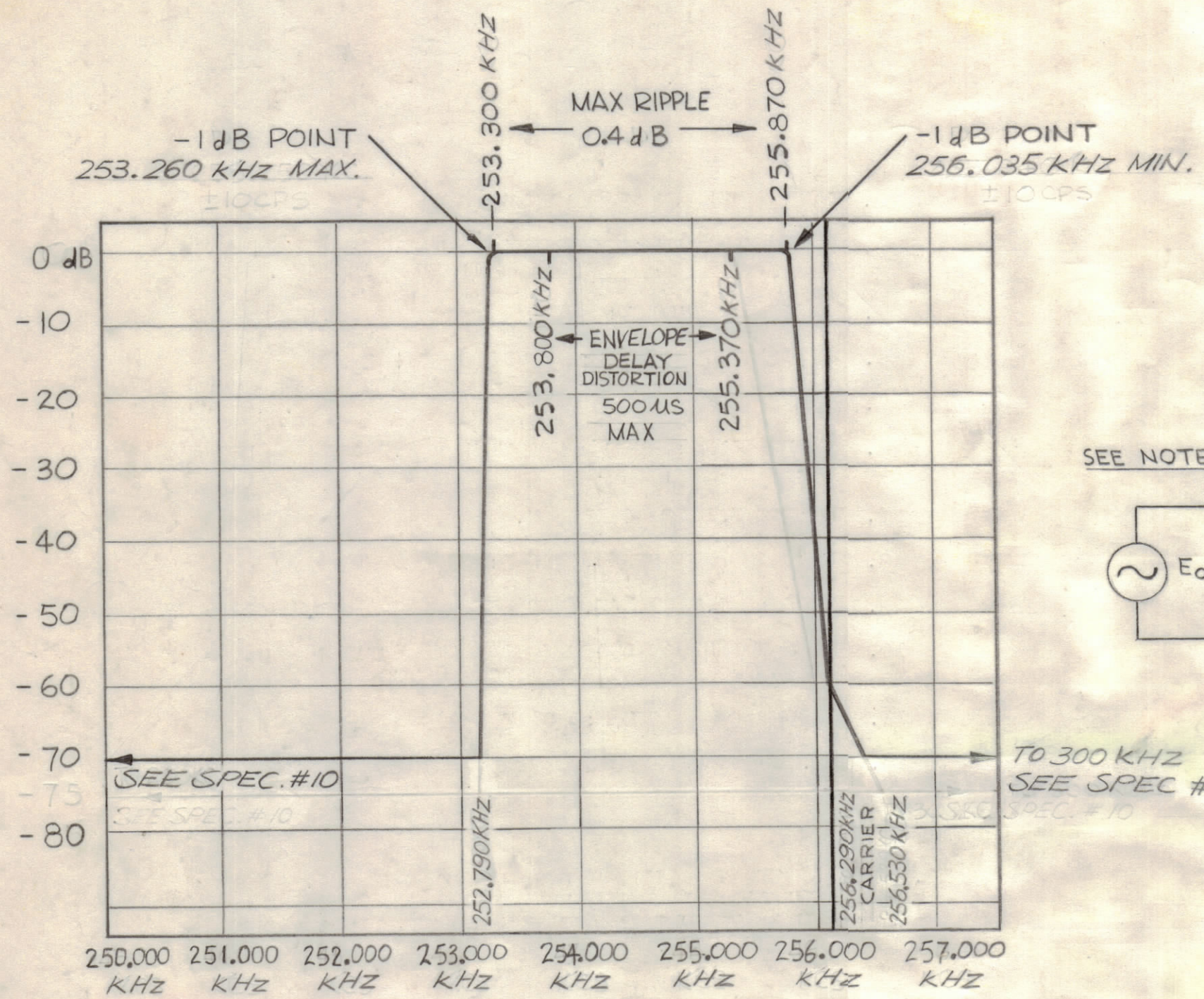


REVISIONS						
SYM	ZONE	DESCRIPTION	DATE	E.M.N.NO.	DRAFT	CHKD APPD
X		EXPERIMENTAL RELEASE	4/2/69	X	K.H.	H.O.
X1		NOTE 10 ON SPEC REVISED	5/6/69	X1	C.V.	H.O.
B		ORIGINAL RELEASE FOR PRODUCTION	5/8/69	B	C.V.	
A		REVNOTE 6, DELETE -70 db FROM CHART	2-23-70	19750	KD	K.H. O.P.



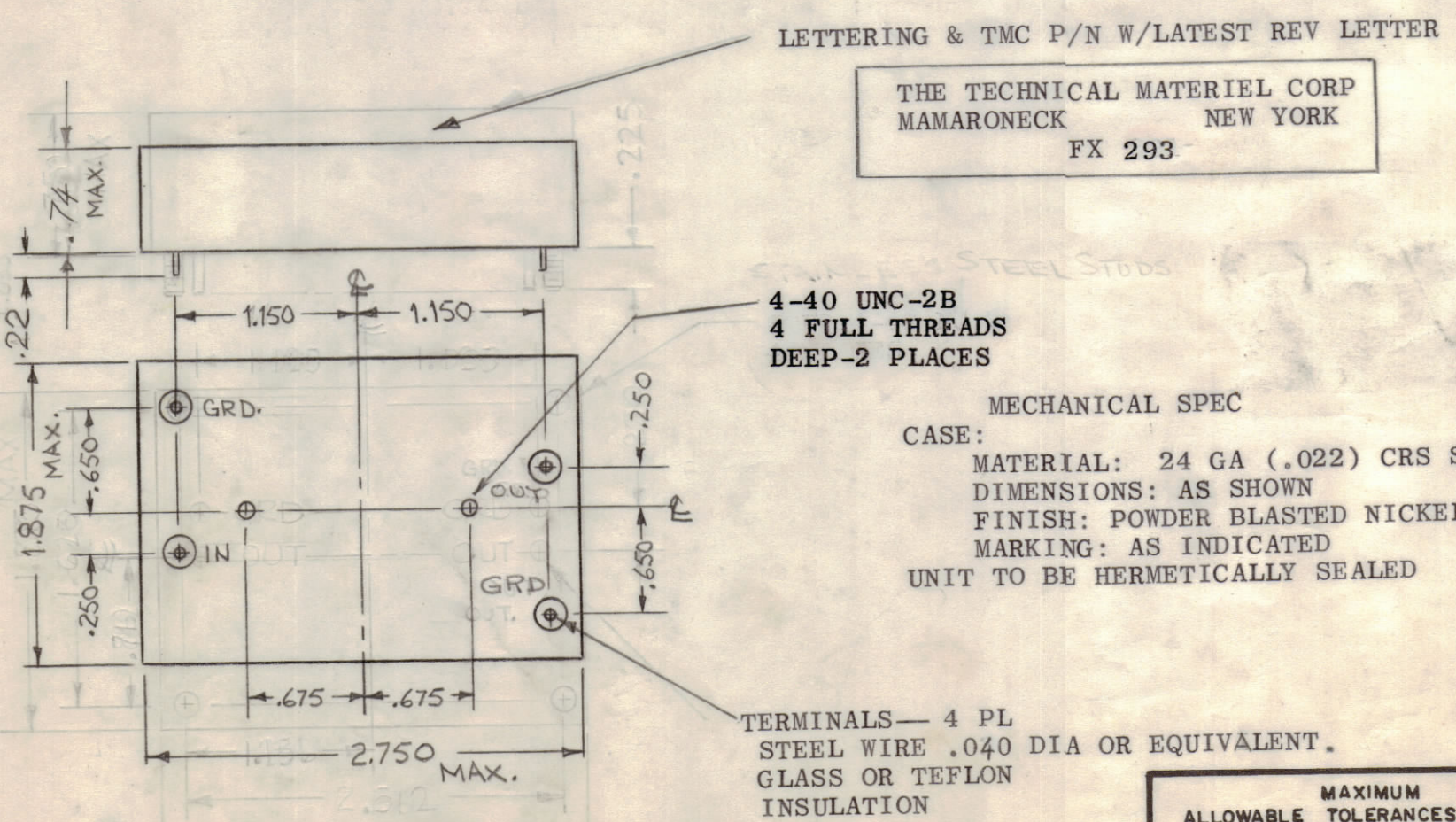
- ### SPECIFICATIONS
- TYPE: OUTER, UPPER SIDEBAND
 - dB MEASUREMENTS: ALL dB MEASUREMENTS ARE RELATIVE TO MAXIMUM SIGNAL RESPONSE IN THE PASSBAND
 - CARRIER FREQUENCY: 256.290 kHz
 - CARRIER SUPPRESSION: AT LEAST 60 dB
 - 1dB POINTS: 253.260 kHz MAX. AND 256.035 kHz MIN
 - 70dB POINTS: NOT LOWER THAN 252.790 kHz MIN & NOT HIGHER THAN 256.530 kHz
 - INSERTION LOSS 4dB MAX
 - SOURCE AND LOAD IMPEDANCE: 500 ±5% OHMS
 - RIPPLE: 0.4 dB MAX BETWEEN 253.300kHz AND 255.870 kHz
 - ALL SPURIOUS RESPONSES AT LEAST 65 dB DOWN FROM 200kHz TO 300kHz
 - OPERATING TEMPERATURE: 0° TO 65°C
 - MAX ENVELOPE DELAY DISTORTION: 500 μs BETWEEN 253.800kHz AND 255.370kHz WHEN TESTED WITH CORRESPONDING EQUALIZER.
 - THIRD ORDER, IN-BAND INTERMODULATION DISTORTION WILL BE AT LEAST 65 dB DOWN FROM THE REFERENCE LEVEL OF EITHER OF TWO EQUAL 30 mv TONES IN THE FILTER PASSBAND, SELECTED IN A MANNER SUCH THAT THE THIRD ORDER PRODUCT FALLS IN THE FILTER PASSBAND.
 - MAXIMUM SIGNAL INPUT: 3 VOLTS rms
 - NON-OPERATING TEMP RANGE: -62°C TO +75°C
 - PEAK SHOCK CAPABILITY: 20 G WITHIN A PERIOD OF 10 MILLISECONDS APPLIED ALONG THREE MUTUALLY PERPENDICULAR AXES
 - VIBRATION CAPABILITY: 5 Hz TO 50 Hz AT AN AMPLITUDE OF 1.3 G

NOTE 1 CHANNEL DESIGNATION REFERS TO 250 kHz. FURTHER SIDEBAND INVERSIONS MUST BE TAKEN INTO ACCOUNT IN DETERMINING THE FINAL CHANNEL DESIGNATION

2 INSERTION LOSS IS DEFINED AS 20 LOG A, WHERE $A = |E_1|/|E_2|$, R_s = SOURCE IMPEDANCE, R_L = LOAD IMPEDANCE SEE SKETCH. E_0 IS FIXED AT ANY FREQUENCY IN THE PASSBAND OF THE FILTER

MARKING PROCESS: AS PER TMC SPECIFICATION S727
 LETTERING: 1/8 HIGH BLACK GOTHIC, LOCATED AS SHOWN

REF: MSAR-5



LETTERING & TMC P/N W/LATEST REV LETTER

THE TECHNICAL MATERIEL CORP
 MAMARONECK NEW YORK
 FX 293

4-40 UNC-2B
 4 FULL THREADS
 DEEP-2 PLACES

MECHANICAL SPEC

CASE:
 MATERIAL: 24 GA (.022) CRS STEEL
 DIMENSIONS: AS SHOWN
 FINISH: POWDER BLASTED NICKEL
 MARKING: AS INDICATED
 UNIT TO BE HERMETICALLY SEALED

TERMINALS— 4 PL
 STEEL WIRE .040 DIA OR EQUIVALENT.
 GLASS OR TEFLON
 INSULATION

MAXIMUM
 ALLOWABLE TOLERANCES HAVE BEEN
 DETERMINED AND ANY DEVIATIONS
 WILL BE CAUSE FOR REJECTION.

QTY REQ	ITEM	PART NO.	DESCRIPTION	SYMBOL
BILL OF MATERIAL				
THE TECHNICAL MATERIEL CORP. MAMARONECK, NEW YORK				
BANDPASS FILTER, CHANNEL A2				
FINAL APPROVAL		DATE	5/8/69	
MECH. DES.		DATE		
ELECT. DES.		DATE		
CHECKED		DATE	4/16/69	
DRAWN		DATE	4/2/69	
APPROVED FOR BUSHIPS			CODE	SIZE DWG. NO.
			82679	C FX 293
CONTRACT NO.			SCALE	SHEET OF
				A