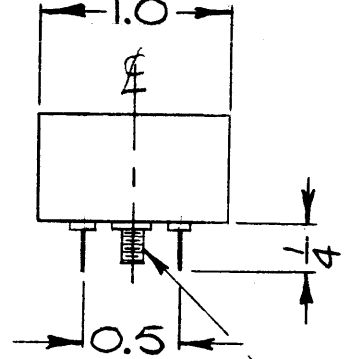
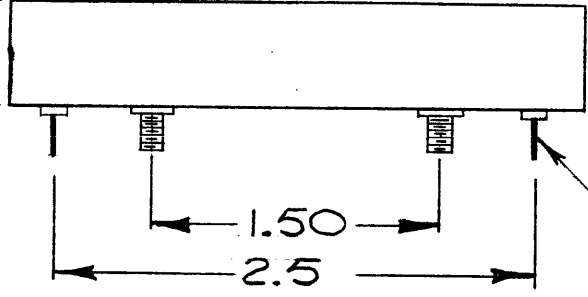
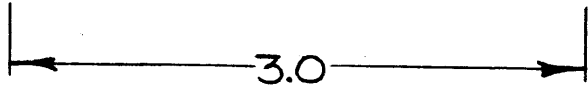


REVISIONS							
ZONE	LTR	DESCRIPTION	DATE	E.M.N.NO	DRAFT	CHKD	APPD
	X	EXP. RELEASE	12-19-67				
	Ø	ORIG. RELEASE FOR PROD	7-22-68		CV		

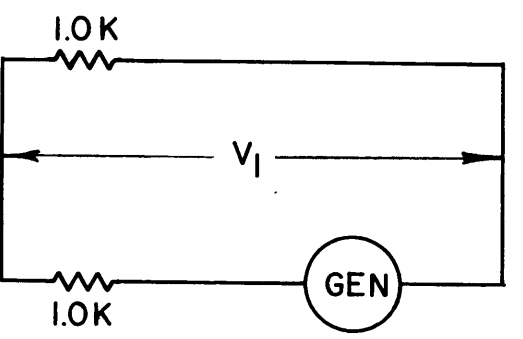
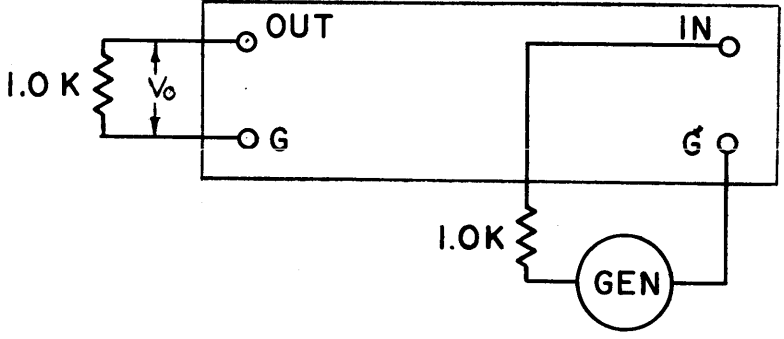
FX286
BANDPASS FILTER
1.417 MHZ SYMMETRICAL

LETTERING APPROX. SIZE SHOWN, BLACK GOTHIC



#4-40 MTG STUDS (2 REQ)

.040 DIA. TERM. PINS (4 REQ.)



SPECIFICATIONS

ELECTRICAL:

- SOURCE & LOAD IMPEDANCE: 1.0 K
- TEMP. RANGE: 0°C TO 70°C
- TYPE: BANDPASS
- ALL dB MEASUREMENTS ARE RELATIVE TO MAX SIGNAL RESPONSE IN THE PASSBAND.
- C.F.: 1.417 MHz
- 1dB POINTS: 1.409 MHz MAX, 1.425 MIN
- 60dB POINTS: 1.665 MAX 1.167 MIN
- RIPPLE: ±.5dB MAX BETWEEN -1dB POINTS
- INSERTION LOSS: 10dB MAX

MECHANICAL:

- CASE: STEEL, HERMETICALLY SEALED
- FINISH: POWDER BLASTED BRIGHT NICKEL
- MOUNTING: 4-40 X 1/4" STUDS (2 REQ)
- TERMINAL: DOUBLE END PIN TYPE, SILVER PLATED, BEAD INSULATION

INSERTION (LOSS OR GAIN) ±(V₁ - V₀) IN dB

REQ'D	ITEM	PART NUMBER	DESCRIPTION	SYM.
	O. POSE LIST OF MATERIAL			
FINAL APPROVAL			DATE	THE TECHNICAL MATERIEL CORP. MAMARONECK, NEW YORK FILTER BANDPASS, SYMMETRICAL 1.417 MHZ
MECH. DES.			DATE	
ELECT. DES.			DATE	
CHECKED			DATE	
DRAWN			DATE	SIZE B CODE IDENT. NO. 82679 DWG NO. FX 286 ISSUE Ø
SCALE			SHEET OF	

1	SME-G	
QTY / UNIT	MODEL USED ON	ASS'Y NO.

APPLICATION	
CODE C	S401-308 ()

NOTICE TO PERSONS RECEIVING THIS DRAWING
THE TECHNICAL MATERIEL CORPORATION claims proprietary right in the material disclosed hereon. This drawing is issued in confidence for engineering information only and may not be reproduced or used to manufacture anything shown hereon without permission from THE TECHNICAL MATERIEL CORPORATION to the user. This drawing is loaned for mutual assistance and is subject to recall at any time.

UNLESS OTHERWISE SPECIFIED DIMENSIONS ARE IN INCHES AND INCLUDE CHEMICALLY APPLIED OR PLATED FINISHES

DECIMALS	FRACTIONS
.X ± .05	1/64
.XX ± .01	TOLS. ANGLES
.XXX ± .005	0° -30'

MATERIAL
SEE MECH SPECS.

FINISH
SEE MECH SPECS.