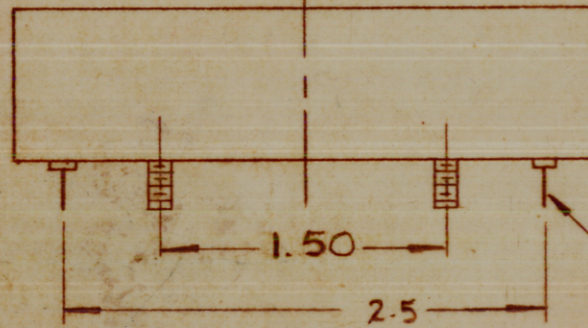


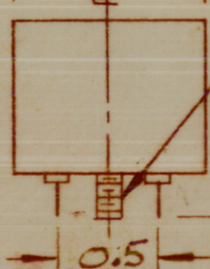
**FX283**  
**BANDPASS FILTER**  
**1.25 MHz SYMMETRICAL**

LETTERING APPROX SIZE SHOWN, BLACK GOTHIC

3.0"



1.0"



.040 DIA TERM PIN (4 REQ)

4-40 MTG STD (2 REQ)

FX283

REVISIONS

SYM	DESCRIPTION	DATE	E.M.N. NO.	DRAFT	CHKD	APPD
X	EXPERIMENTAL RELEASE	6-26-67	X			
Ø	ORIGINAL RELEASE FOR PRODUCTION	2-12-69	Ø	R.G.		

SPECIFICATIONS

ELECTRICAL:

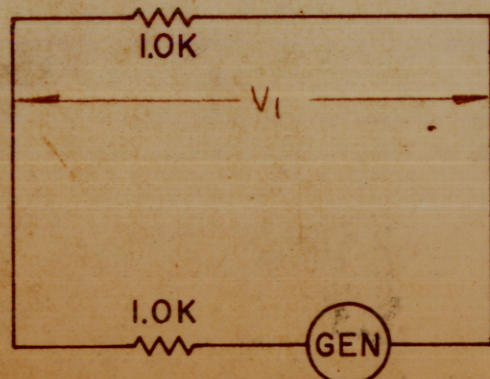
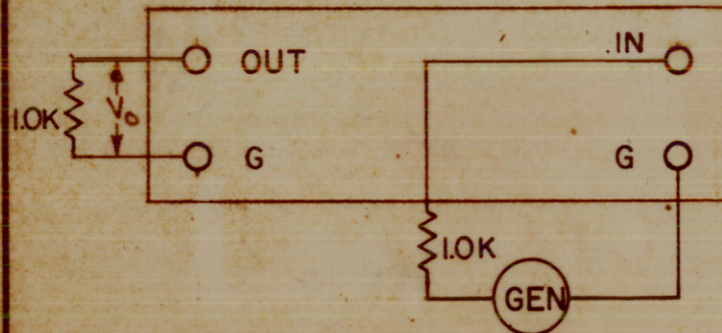
SOURCE & LOAD IMPEDANCE: 1.0 K  
 TEMP. RANGE: 0° TO 70°C  
 TYPE: BANDPASS  
 ALL dB MEASUREMENTS ARE RELATIVE TO MAX SIGNAL RESPONSE IN THE PASS BAND.  
 C.F. = 1.25 MHz  
 -3 dB POINTS: 1.2495 Hz MAX, 1.2505 MHz MIN  
 -60 dB POINTS: 1.125 MHz MIN, 1.375 MHz MAX  
 RIPPLE: ±1.5 dB MAX "BETWEEN -3dB POINTS

INSERTION LOSS: 10 dB MAX

MECHANICAL:

CASE: STEEL, HERMETICALLY SEALED  
 FINISH: POWDER BLASTED BRIGHT NICKEL  
 NOTE: TERMINAL END UNPAINTED  
 MOUNTING: 4-40 x 1/4" STUDS (2 REQ)  
 TERMINAL: DOUBLE END PIN TYPE, BRASS, SILVER PLATED, BEAD INS

INSERTION (LOSS OR GAIN) ± (V<sub>1</sub> - V<sub>0</sub>) IN dB



NOTES

QTY./UNIT	CHG ( ) -4	MODEL USED ON	ASS'Y. NO.
SCALE	CODE	C	S401-308

THE CONTENTS OF THIS DRAWING ARE THE EXCLUSIVE PROPERTY OF THE TECHNICAL MATERIEL CORP. ITS UNAUTHORIZED USE OR REPRODUCTION IN WHOLE OR IN PART IS STRICTLY FORBIDDEN.

REQ'D.	ITEM	PART NUMBER	DESCRIPTION	SYMBOL
O. POSE LIST OF MATERIAL				
MATERIAL		THE TECHNICAL MATERIEL CORP. MAMARONECK, NEW YORK		
FINISH		TITLE FILTER, BANDPASS 1.25 MHz SYMMETRICAL		
UNLESS OTHERWISE SPECIFIED DIMENSIONS ARE IN INCHES AND INCLUDE CHEMICALLY APPLIED OR PLATED FINISHES		DRAWN	DATE	FINAL APPROVAL
		CHECKED	DATE	
DECIMALS		ELECT. DES.	DATE	
.X ± .05		MECH. DES.	DATE	
.XX ± .01		FX 283		Ø
.XXX ± .005		SHEET		REV. LTR.
TOLERANCES		± 1/64		
		ANGLES		
		± 0° 30'		