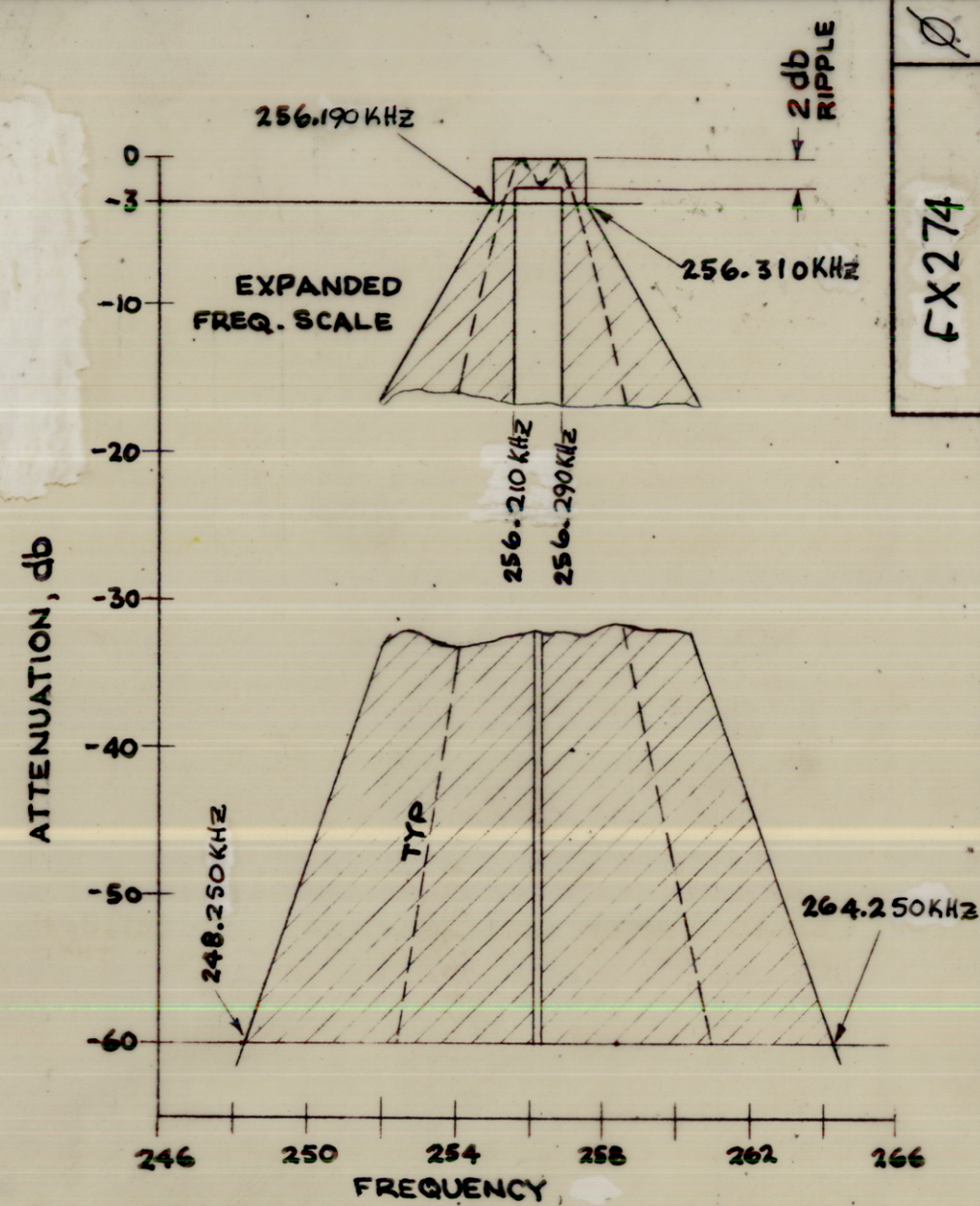
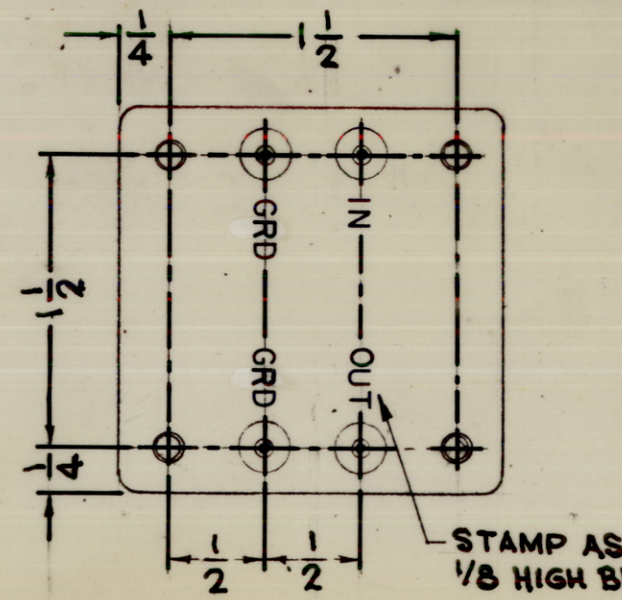
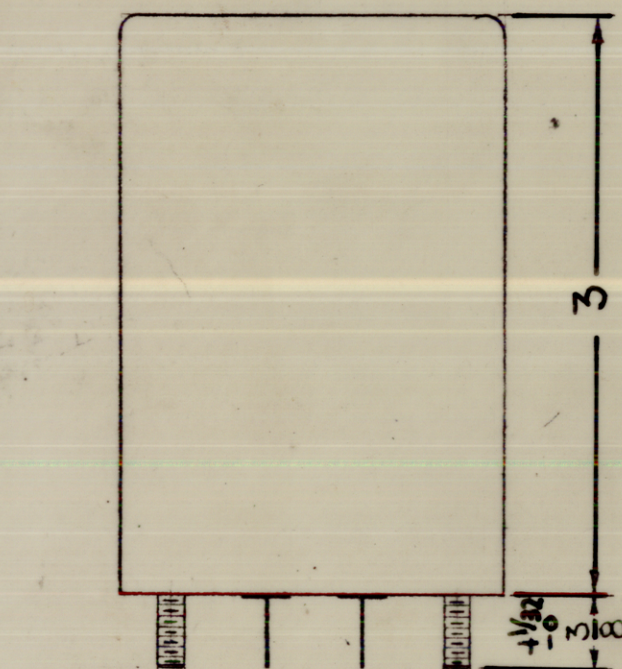
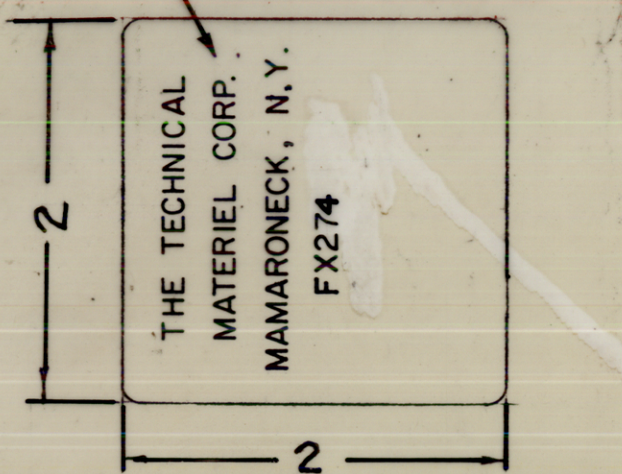
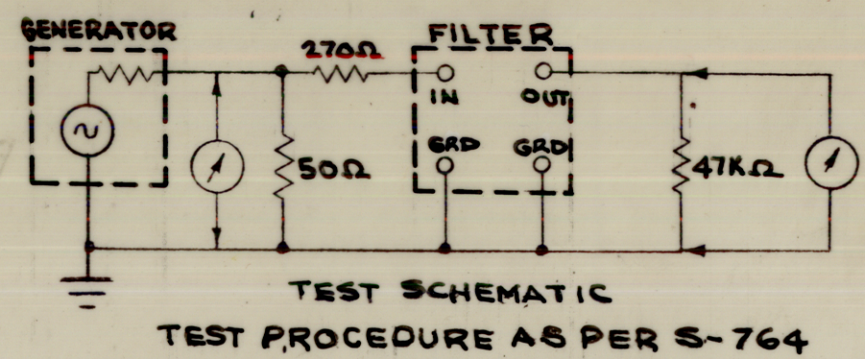


STAMP AS SHOWN
1/8 HIGH BLACK GOTHIC



ATTENUATION, db

NOTE: CURVE MUST BE WITHIN SHADED AREA.



1	MCG-21	
Q'TY./UNIT	MODEL USED ON	ASS'Y. NO.
SCALE 1:1	CODE C	S401-210
THE CONTENTS OF THIS DRAWING ARE THE EXCLUSIVE PROPERTY OF THE TECHNICAL MATERIEL CORP. ITS UNAUTHORIZED USE OR REPRODUCTION IN WHOLE OR IN PART IS STRICTLY FORBIDDEN.		

FX274

REVISIONS

SYM	DESCRIPTION	DATE	E.M.N. NO.	DRAFT	CHKD	APPD
Ø	ORIGINAL RELEASE FOR PROD	2/2/67				

ELECTRICAL SPECIFICATIONS

- NOTE: ALL MEASUREMENTS TAKEN RELATIVE TO MAXIMUM OUTPUT IN PASSBAND
1. TYPE: BANDPASS, 100 CYCLE
 2. CENTER FREQUENCY: 256.250 KHZ
 3. TRAILING SLOPE: -60 db @ 264.250 KHZ OR LESS
 4. LEADING SLOPE: -30 db @ 250 KHZ OR MORE, -60 db @ 248.250 KHZ OR MORE
 5. -3 db POINTS: 256.300 KHZ ± 10 HZ, 256.200 KHZ ± 10 HZ
 6. MAXIMUM PASSBAND VARIATION: 2 db
 7. RETURN LOBES: ATTENUATED GREATER THAN 60 db
 8. FILTER INSERTION GAIN: 13 db ± 1 db
 9. INPUT IMPEDANCE: 300 Ω
 10. OUTPUT IMPEDANCE: 47,000 Ω
 11. TEMPERATURE RANGE: 0°C TO 70°C

MECHANICAL SPECIFICATIONS

1. CASE: STEEL, HERMETICALLY SEALED
2. TERMINAL DATA: (4) MINIATURE SINGLE TERMINALS, GLASS INSULATED WITH .032-.040 DIA. WIRE LEADS, 3/8 LONG ± 1/32
3. MOUNTING DATA: (4) 6-32 THD. STUDS, 3/8 LONG
4. FINISH DATA: S115 TMC GREY ENAMEL OR BRUSHED NICKEL

STANDARD DRAWING

REQ'D.	ITEM	PART NUMBER	DESCRIPTION	SYMBOL
O. POSE LIST OF MATERIAL				
MATERIAL		SEE MECH. SPEC.	THE TECHNICAL MATERIEL CORP. MAMARONECK, NEW YORK	
FINISH		SEE MECH. SPEC.	TITLE FILTER, BANDPASS, CRYSTAL	
UNLESS OTHERWISE SPECIFIED DIMENSIONS ARE IN INCHES AND INCLUDE CHEMICALLY APPLIED OR PLATED FINISHES				
DECIMALS	TOLERANCES	FRACTIONS	DRAWN	DATE
.X ± .05		± 1/64	W. J. [Signature]	2-21-66
.XX ± .01		ANGLES	CHECKED	DATE
.XXX ± .005		± 0° 30'	[Signature]	1-31-67
			ELECT. DES.	DATE
			MECH. DES.	DATE
			FINAL APPROVAL	
			[Signature]	DATE
			FX 274	2/2/67
			SHEET	REV. LTR.