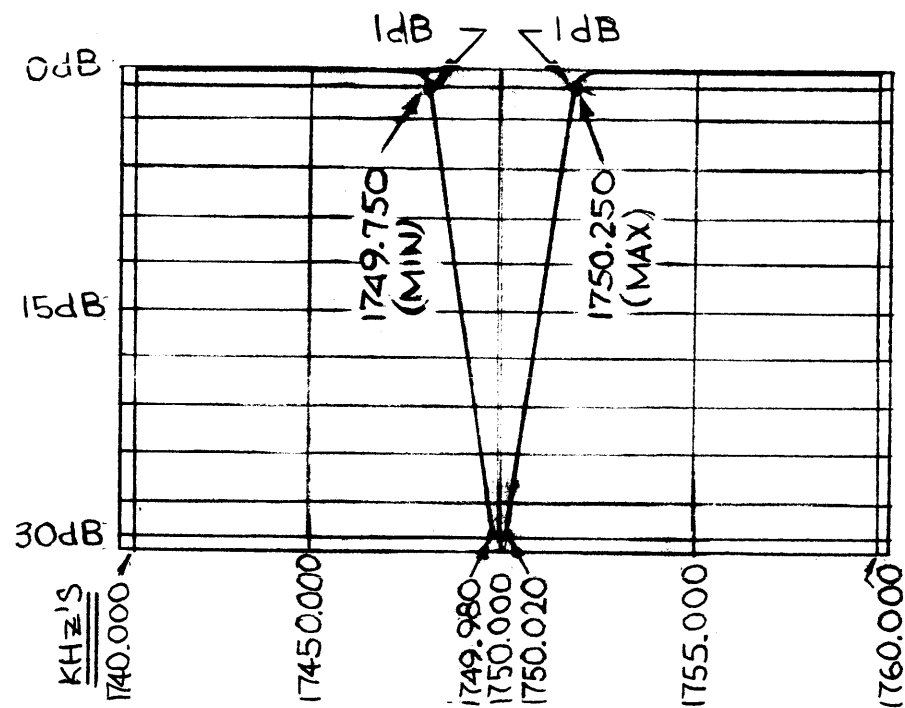


STANDARD DRAWING



FX273

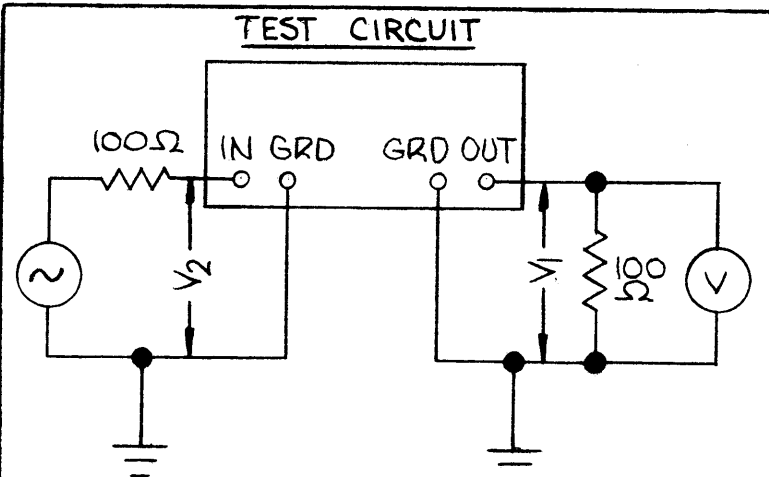
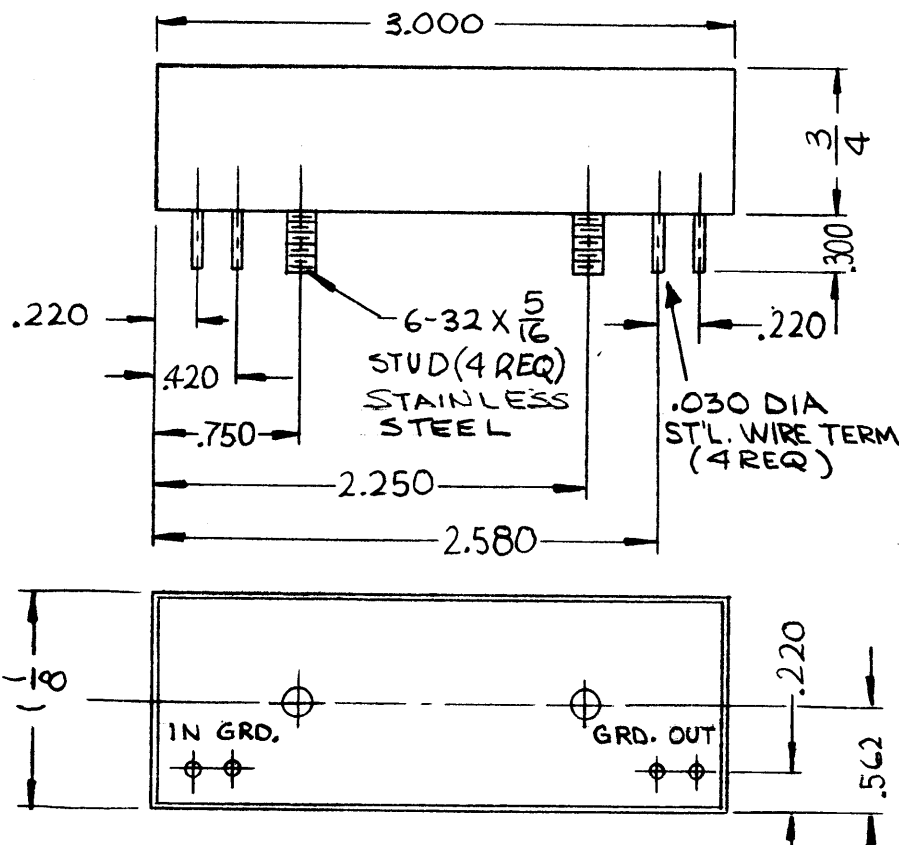
REVISIONS						
SYM	DESCRIPTION	DATE	E.M.N. NO.	DRAFT	CHKD	APPD
X	EXPERIMENTAL RELEASE	11-21-66	X	RME	<i>[Signature]</i>	
Ø	ORIGINAL RELEASE FOR PRODUCTION	11-22-66	Ø	RME		<i>[Signature]</i>

SPECIFICATIONS

TYPE: CRYSTAL NOTCH FILTER
 MEASUREMENTS: ALL dB MEASUREMENTS ARE RELATIVE TO MAX SIGNAL RESPONSE IN PASSBAND
 CARRIER FREQUENCY: 1.750 MHz
 CARRIER SUPPRESSION:
 1dB POINTS: 1749.750 KHz MIN
 1750.250 KHz MAX
 30dB POINTS: 1749.980 KHz MAX
 1750.020 KHz MIN
 ALL RETURN LOBES OR SPURIOUS SHALL BE GREATER THAN -30dB WITHIN NOTCH
 PASSBAND RIPPLE: 0.5 dB WITHIN A BAND WIDTH OF ±10.0 KHz OF CARRIER FREQUENCY
 INSERTION LOSS: 3 dB
 INPUT & OUTPUT IMPEDANCE: 100 Ω
 TEMPERATURE RANGE: 0°C TO 50°C
 TERMINAL DATA:
 QUANTITY OF PIN: 4
 TYPE:
 CASE DATA:
 MATERIAL: .030 BRASS
 FINISH: POWDER BLASTED NICKEL
 MARKING: BLACK EPOXY INK

THE TECHNICAL MATERIEL CORP.
FX273

MARK TMC PART NO.
 1/8 HIGH, BLACK GOTHIC.



GRD TERM GROUNDED TO CASE FOR TEST

NOTES

SMEA-1		ASS'Y. NO.
Q'TY./UNIT	MODEL USED ON	ASS'Y. NO.
SCALE	CODE	S401-308
THE CONTENTS OF THIS DRAWING ARE THE EXCLUSIVE PROPERTY OF THE TECHNICAL MATERIEL CORP. ITS UNAUTHORIZED USE OR REPRODUCTION IN WHOLE OR IN PART IS STRICTLY FORBIDDEN.		

REQ'D.	ITEM	PART NUMBER	DESCRIPTION	SYMBOL
LIST OF MATERIAL				
MATERIAL		THE TECHNICAL MATERIEL CORP. MAMARONECK, NEW YORK		
FINISH		TITLE FILTER, BAND SUPPRESSION		
UNLESS OTHERWISE SPECIFIED DIMENSIONS ARE IN INCHES AND INCLUDE CHEMICALLY APPLIED OR PLATED FINISHES		DRAWN	DATE	FINAL APPROVAL
DECIMALS .X ± .05 .XX ± .01 .XXX ± .005		<i>[Signature]</i>	11-7-66	<i>[Signature]</i>
FRACTIONS ± 1/64 ANGLES ± 0° 30'		CHECKED	DATE	DATE
TOLERANCES		<i>[Signature]</i>	11/21/66	11/22/66
		ELECT. DES.	DATE	
		<i>[Signature]</i>	11/22/66	
		MECH. DES.	DATE	
SHEET				REV. LTR.