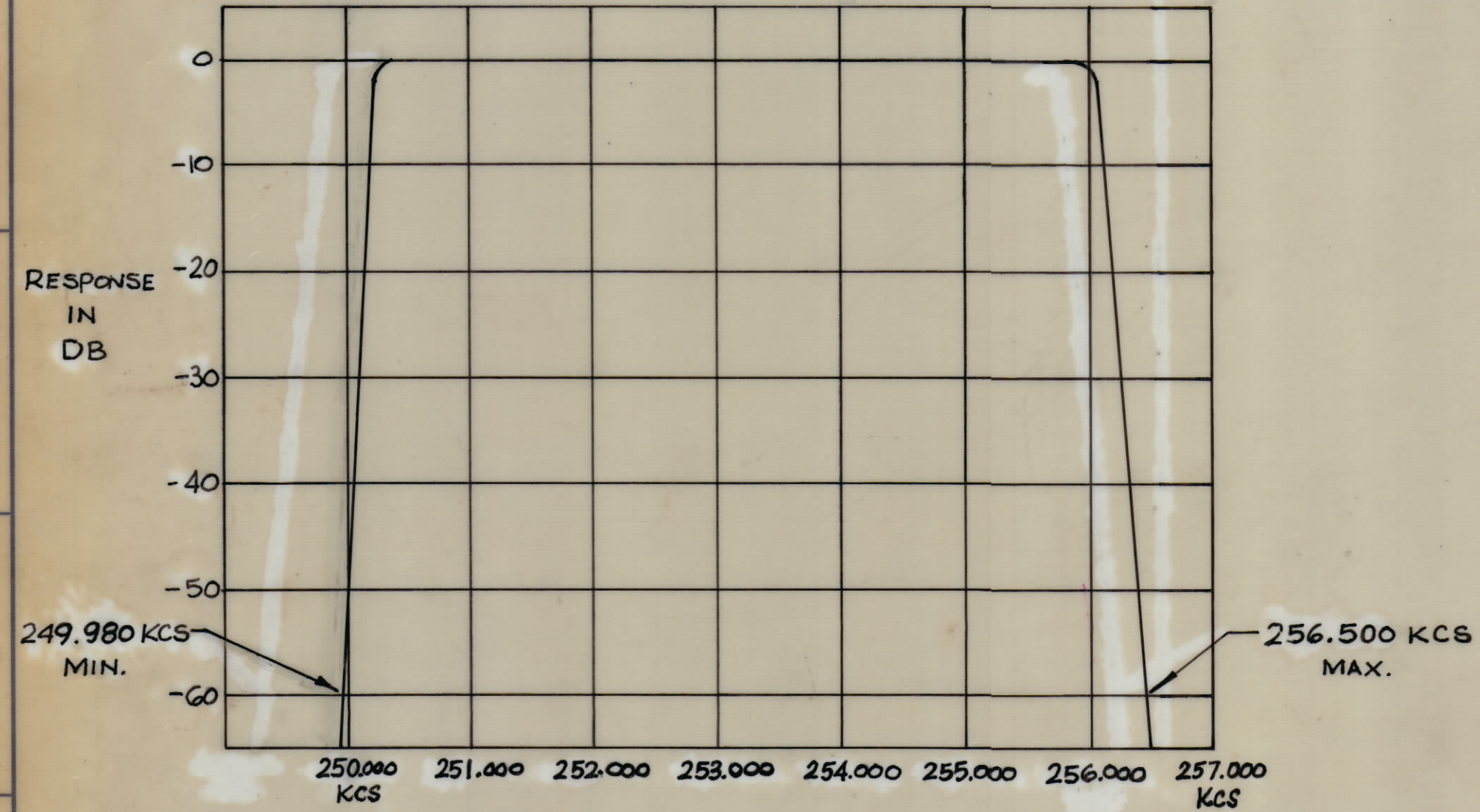
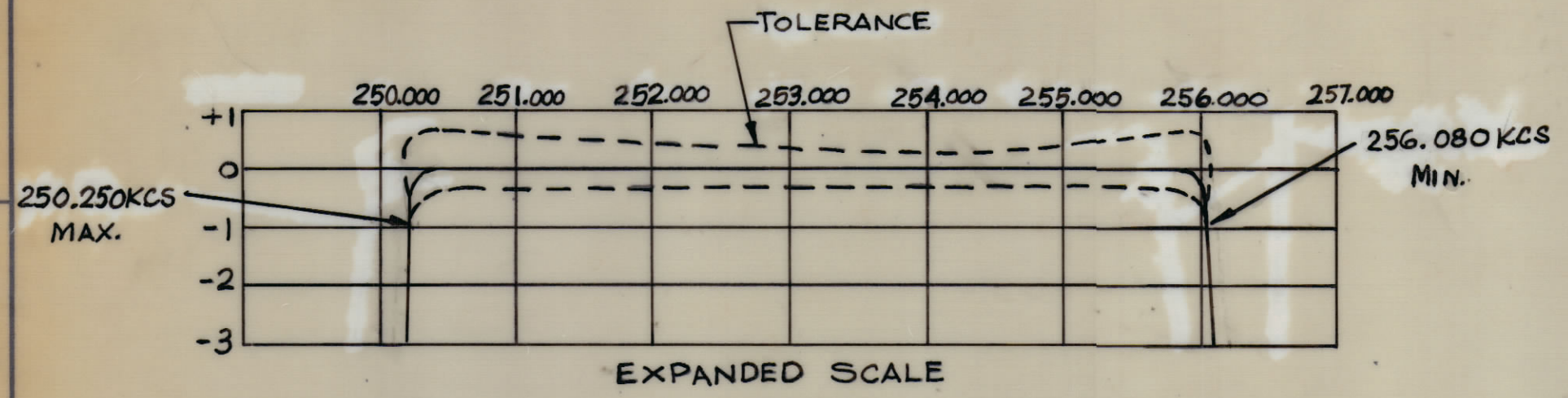


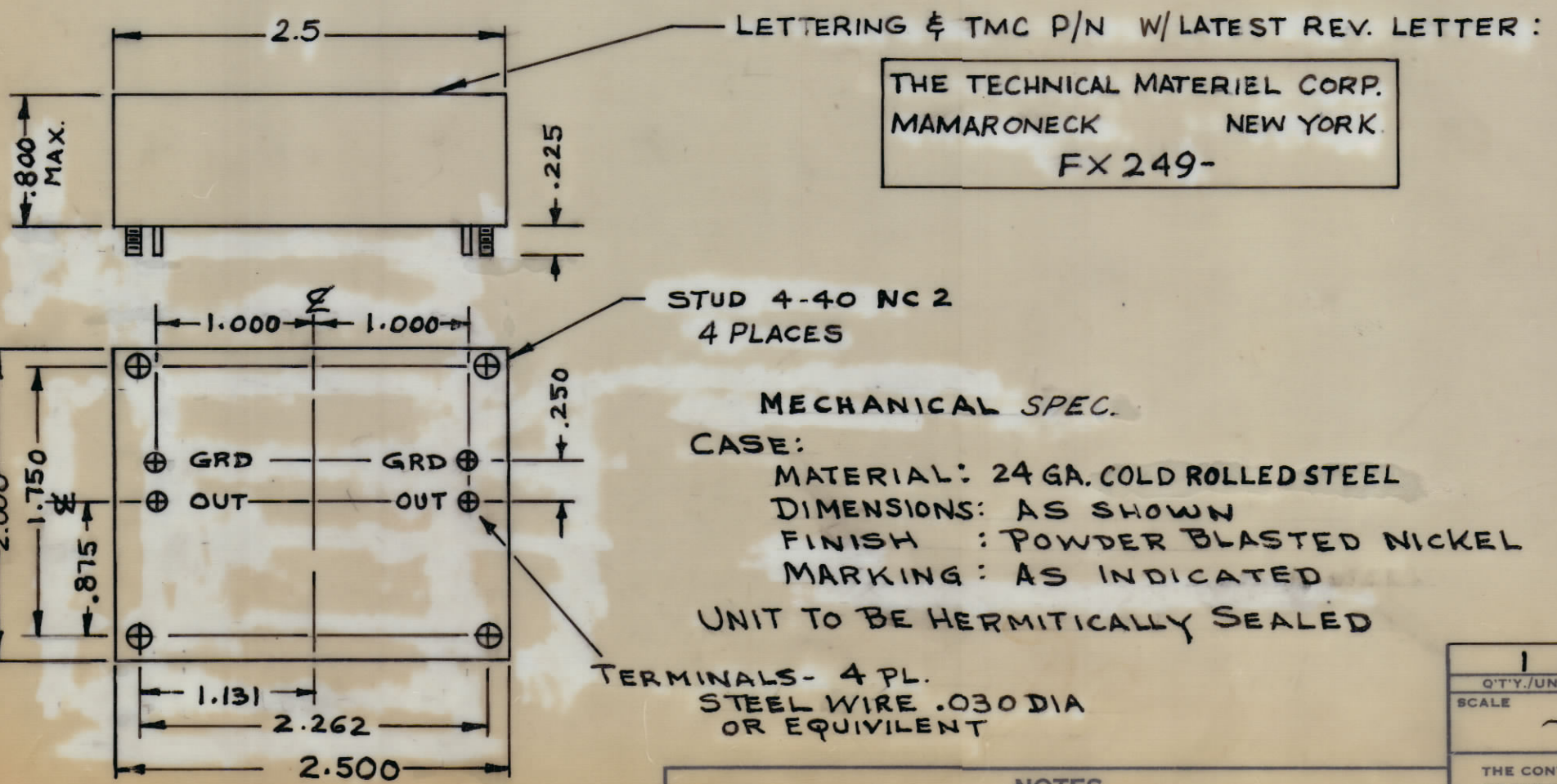
REVISIONS						
ZONE	SYM	DESCRIPTION	DATE	E.M.N. NO.	DRAFT	CHKD APPD
	Ø	ORIGINAL RELEASE FOR PROD	12/26/65			HO



— SPECIFICATIONS —

1. TYPE : INNER, UPPER SIDEBAND
2. DB MEASUREMENTS : ALL DB MEASUREMENTS ARE RELATIVE TO MAXIMUM SIGNAL RESPONSE IN THE PASSBAND.
3. CARRIER FREQUENCY : 250 KCS
4. CARRIER SUPPRESSION : AT LEAST 55 DB
5. -1DB POINTS : NOT HIGHER THAN 250.250 KCS AND NOT LOWER THAN 256.080 KCS
6. -60 DB POINTS : NOT LOWER THAN 249.980 KCS & NOT HIGHER THAN 256.500 KCS
7. INSERTION LOSS : 4 DB MAX.
8. INPUT IMPEDANCE : 500 OHMS
9. OUTPUT IMPEDANCE : 500 OHMS
10. ALL SPURS AT LEAST 60 DB DOWN BETWEEN 150 KCS & 350 KCS.
11. MAXIMUM PASS BAND RIPPLE VS TEMPERATURE :
 - 1 DB FROM +15°C TO +55°C
 - 1.5 DB FROM -30°C TO +15°C
 - 3 DB FROM -40°C TO -30°C

NOTE : CHANNEL DESIGNATION REFERS TO 250 KCS. FURTHER SIDEBAND INVERSIONS MUST BE TAKEN INTO ACCOUNT IN DETERMINING THE FINAL CHANNEL DESIGNATION.



MARKING PROCESS: AS PER TMC SPECIFICATION S-727.
LETTERING: 1/8 HIGH BLACK GOTHIC, LOCATED AS SHOWN.

CMRB-1	
Q'TY./UNIT	MODEL USED ON
SCALE	ASS'Y. NO.
	CODE

REQ'D.	ITEM	PART NUMBER	DESCRIPTION	SYMBOL
POSE				
LIST OF MATERIAL				
MATERIAL			THE TECHNICAL MATERIEL CORP. MAMARONECK, NEW YORK	
FINISH			TITLE BANDPASS FILTER, CHANNEL A	
DRAWN H. AUSTIN		DATE 12-7-65	FINAL APPROVAL <i>[Signature]</i>	
CHECKED HO		DATE 12/11/65	DATE 12/29/65	
ELECT. DES.		DATE FX 249		
MECH. DES.		REV. LTR. Ø		

FX 249