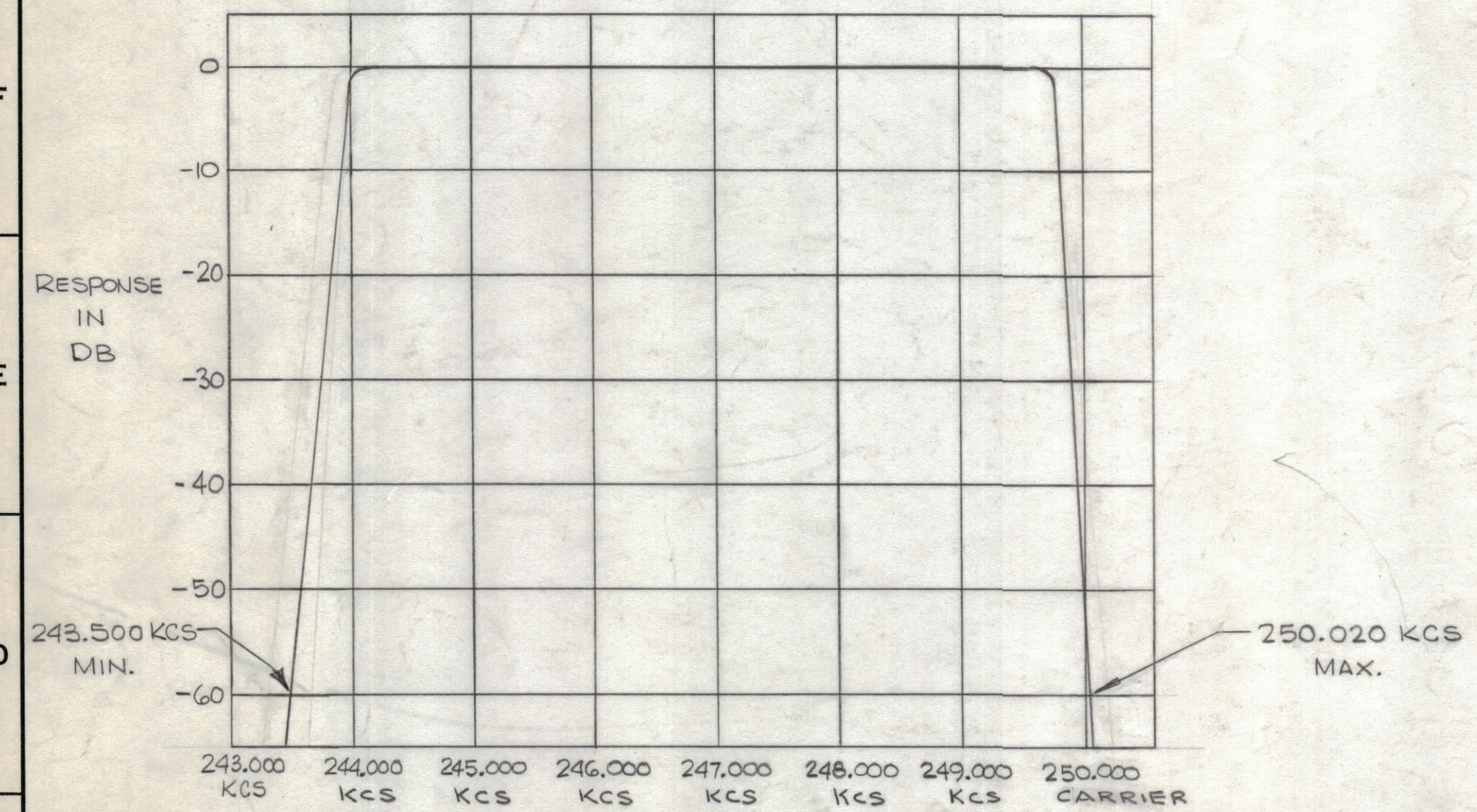
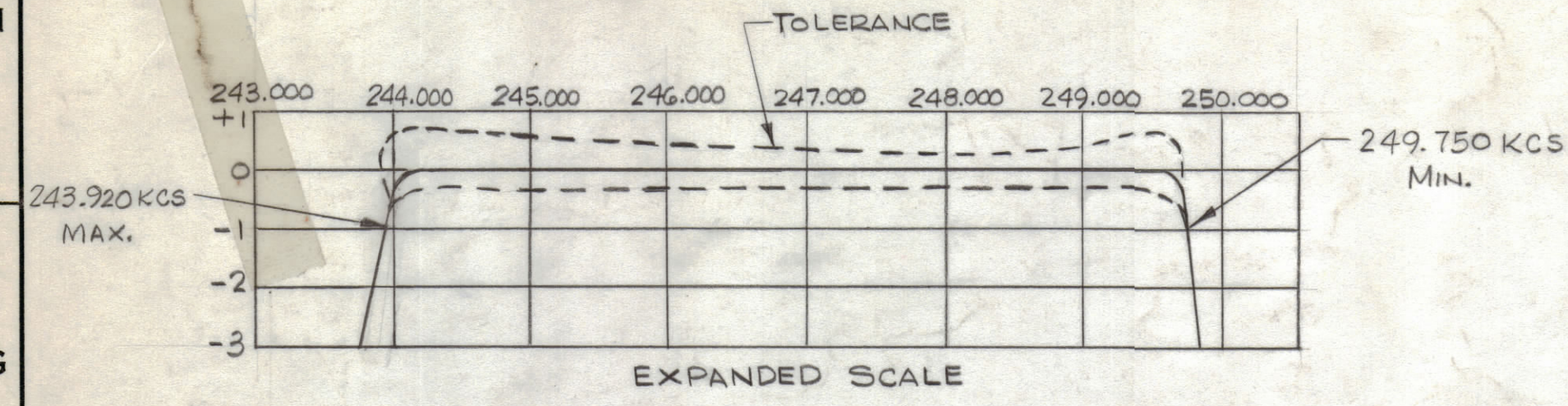


REVISIONS						
ZONE	SYM	DESCRIPTION	DATE	E.M.N. NO.	DRAFT	CHKD APPD
	Ø	ORIGINAL RELEASE FOR PROD	1/20/65			HGD
	A	243.500 WAS 243.920; 243.920 WAS 249.000 KCS	3/20/66	16031	HGD	HGD

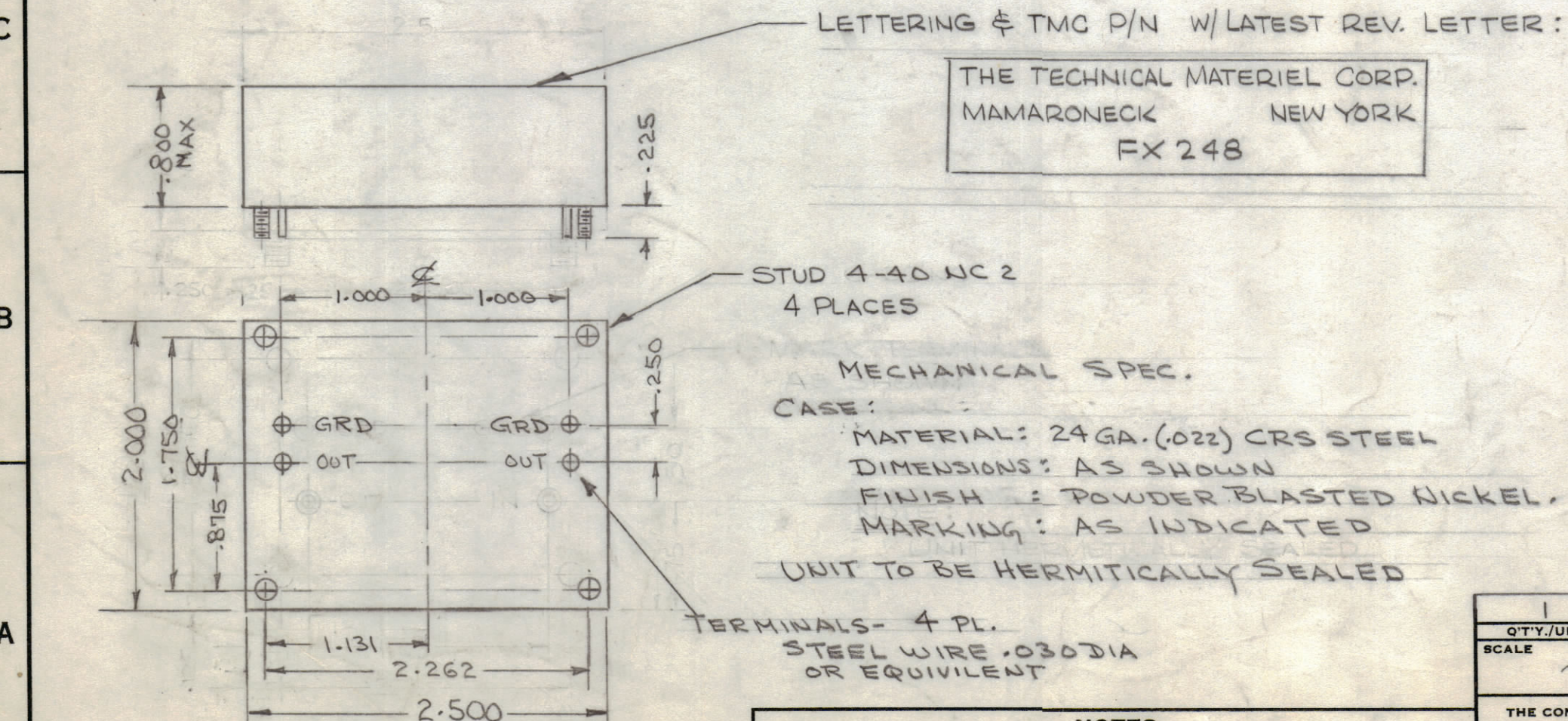


— SPECIFICATIONS —

1. TYPE : INNER, LOWER SIDEBAND
2. DB MEASUREMENTS : ALL DB MEASUREMENTS ARE RELATIVE TO MAXIMUM SIGNAL RESPONSE IN THE PASSBAND.
3. CARRIER FREQUENCY : 250 KCS
4. CARRIER SUPPRESSION : AT LEAST 55 DB
5. -1DB POINTS : NOT HIGHER THAN 243.920 KCS AND NOT LOWER THAN 249.750 KCS
6. -60DB POINTS : NOT LOWER THAN 243.500 KCS & NOT HIGHER THAN 250.020KCS
7. INSERTION LOSS 4DB MAX.
8. INPUT IMPEDANCE : 500 OHMS
9. OUTPUT IMPEDANCE : 500 OHMS
10. ALL SPURS AT LEAST 60 DB DOWN BETWEEN 150 KCS & 350 KCS.
11. MAXIMUM PASS BAND RIPPLE VS. TEMPERATURE :
 - 1 DB FROM +15°C TO +55°C
 - 1.5 DB FROM -30°C TO +15°C
 - 3 DB FROM -40°C TO -30°C

NOTE: CHANNEL DESIGNATION REFERS TO 250 KCS. FURTHER SIDEBAND INVERSIONS MUST BE TAKEN INTO ACCOUNT IN DETERMINING THE FINAL CHANNEL DESIGNATION.

MARKING PROCESS: AS PER TMC SPECIFICATION S-727.
LETTERING: 1/8 HIGH BLACK GOTHIC, LOCATED AS SHOWN.



NOTES

CMRB-1		
Q'TY/UNIT	MODEL USED ON	ASS'Y. NO.
SCALE	CODE	

THE CONTENTS OF THIS DRAWING ARE THE EXCLUSIVE PROPERTY OF THE TECHNICAL MATERIEL CORP. ITS UNAUTHORIZED USE OR REPRODUCTION IN WHOLE OR IN PART IS STRICTLY FORBIDDEN.

REQ'D.	ITEM	PART NUMBER	DESCRIPTION	SYMBOL
POSE LIST OF MATERIAL				
MATERIAL		THE TECHNICAL MATERIEL CORP. MAMARONECK, NEW YORK		
FINISH		TITLE BANDPASS FILTER, CHANNEL B		
UNLESS OTHERWISE SPECIFIED DIMENSIONS ARE IN INCHES AND INCLUDE CHEMICALLY APPLIED OR PLATED FINISHES		DRAWN H. AUSTIN	DATE 12-7-65	FINAL APPROVAL [Signature]
DECIMALS .X ± .05 .XX ± .01 .XXX ± .005		CHECKED HGD	DATE 12-11-65	DATE 12/11/65
FRACTIONS ± 1/64 ANGLES ± 0° 30'		ELECT. DES.	DATE	
TOLERANCES		MECH. DES.	DATE	
SHEET				REV. LTR. A

FX 248
A