

A  
FX 241

REVISIONS					
SYM	DESCRIPTION	DATE	E.M.N. NO.	DRAFT	CHKD APPD
X1	GRAPH & SPES CLARIFIED.	5/16/66	X1	JA	gls
Ø	ORIGINAL RELEASE FOR PRODUCTION	5/17/66	Ø	CV	gls
A	"OR GLASS" ADDED TO TERM INS.	9.30.66	16923	WFO	JCS

**ELECTRICAL SPECIFICATIONS:**

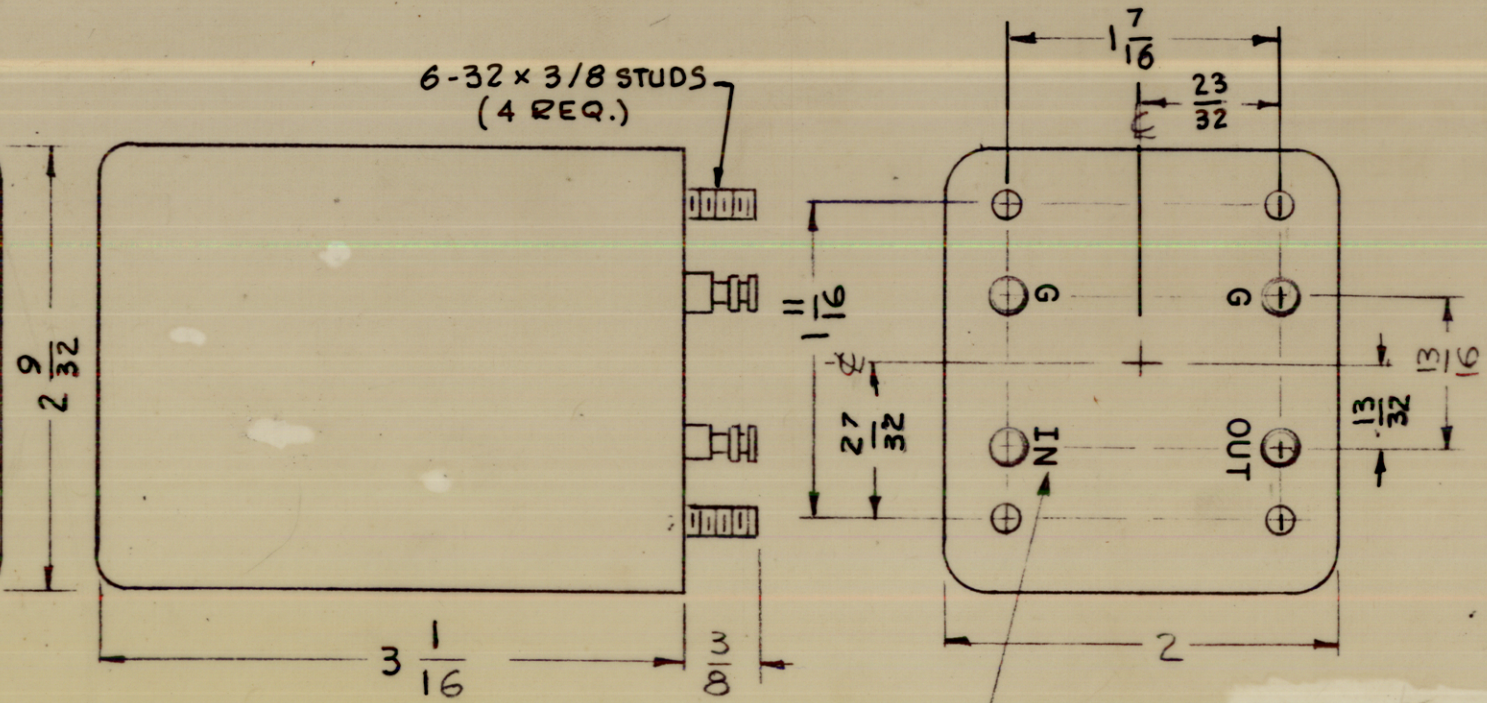
1. TYPE: LOWER SIDEBAND
2. DB MEASUREMENTS: ALL DB MEASUREMENTS ARE RELATIVE TO MAXIMUM SIGNAL RESPONSE IN THE PASS BAND.
3. CARRIER FREQUENCY: 250.000 KCS.
4. CARRIER SUPPRESSION: AT LEAST 55DB.
5. -1DB POINTS: NOT HIGHER THAN 246.960 & NOT LOWER THAN 249.750 KCS
6. -60DB POINTS: 246.750 KCS MINIMUM AND 250.000 KCS MAX.
7. INSERTION LOSS 10DB MAXIMUM
8. INPUT IMPEDANCE: 10K OHMS UNBALANCED.
9. OUTPUT IMPEDANCE: 10K OHMS UNBALANCED.
10. PASS BAND RESPONSE VS. TEMPERATURE:
  - ±0.5db FROM + 15°C TO + 55°C
  - ±1.5db FROM - 30°C TO + 15°C
  - ±3.0db FROM -40°C TO - 30°C

NOTE: CHANNEL DESIGNATION REFERS TO 250.000 KCS FURTHER SIDEBAND INVERSIONS MUST BE TAKEN INTO ACCOUNT IN DETERMINING THE FINAL CHANNEL DESIGNATION.

**MECHANICAL SPECIFICATIONS:**

CASE: STEEL  
 FINISH: TMC GRAY (S-115) OR POWDER BLASTED BRIGHT NICKEL  
 NOTE: TERMINAL END UNPAINTED  
 MOUNTING: 6-32 X 3/8 STUDS (4 required)  
 TERMINAL: DOUBLE END PIN TYPE, BRASS, SILVER PLATED, TEFLON OR GLASS INSULATED

FX 241  
 LOWER SIDEBAND  
 FILTER  
 THE TECHNICAL MATERIEL  
 CORPORATION  
 MAMARONECK NEW YORK



METAL STAMP AS SHOWN 1/8 HIGH GOTHIC

MARKING PROCESS: AS PER TMC SPECIFICATION S-727.

**NOTES**

1	SBE-8	
Q'TY./UNIT	MODEL USED ON	ASS'Y. NO.
SCALE 1:1	CODE C	
THE CONTENTS OF THIS DRAWING ARE THE EXCLUSIVE PROPERTY OF THE TECHNICAL MATERIEL CORP. ITS UNAUTHORIZED USE OR REPRODUCTION IN WHOLE OR IN PART IS STRICTLY FORBIDDEN.		

O. POSE		LIST OF MATERIAL			
MATERIAL		THE TECHNICAL MATERIEL CORP. MAMARONECK, NEW YORK			
FINISH		TITLE FILTER, BANDPASS LOWER SIDEBAND - 3KC			
UNLESS OTHERWISE SPECIFIED DIMENSIONS ARE IN INCHES AND INCLUDE CHEMICALLY APPLIED OR PLATED FINISHES		DRAWN G.D.L	DATE 8.13.66	FINAL APPROVAL	
DECIMALS .X ± .05 .XX ± .01 .XXX ± .005		CHECKED [Signature]	DATE	DATE 5/18/66	
FRACTIONS ± 1/64 ANGLES ± 0° 30'		ELECT. DES.	DATE	FX 241	
TOLERANCES		MECH. DES.	DATE	SHEET	
				REV. LTR.	