

FX 240

REVISIONS						
SYM	DESCRIPTION	DATE	E.M.N. NO.	DRAFT	CHKD	APPD
Ø	ORIGINAL RELEASE FOR PRODUCTION	8/7/69	Ø	Ø		

ELECTRICAL SPECIFICATIONS:

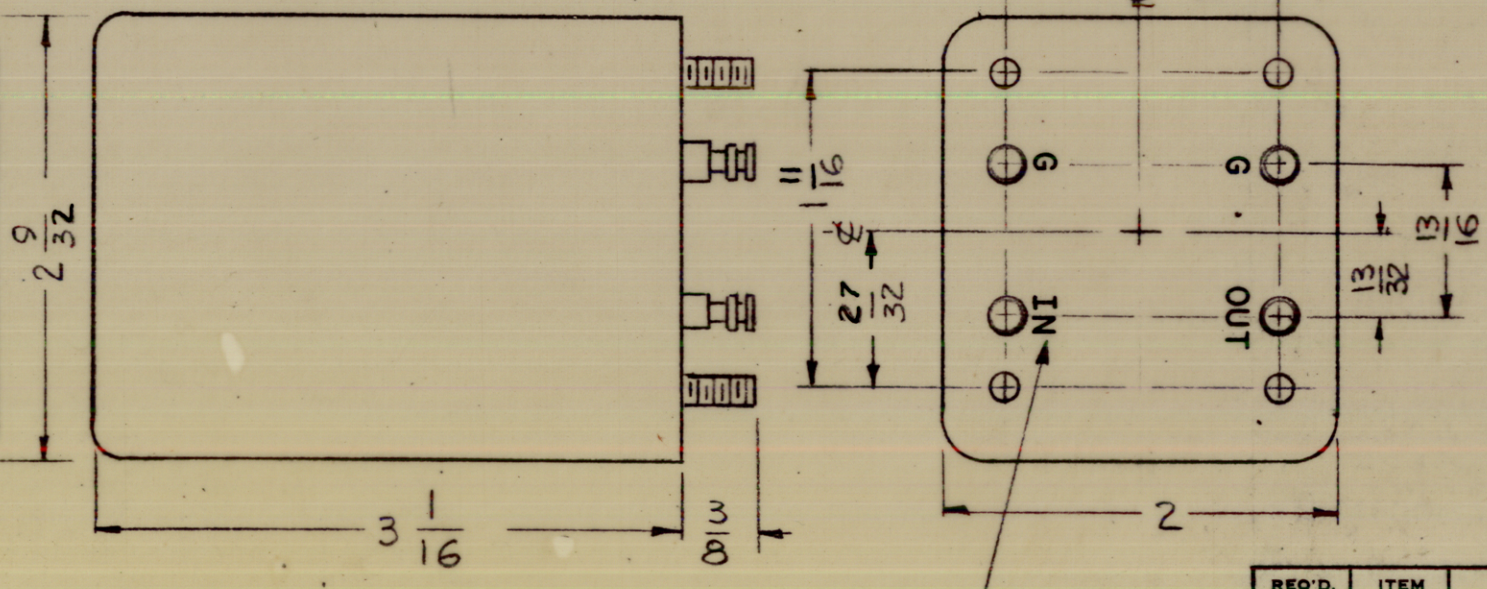
1. TYPE: INNER UPPER SIDEBAND
2. DB MEASUREMENTS: ALL DB MEASUREMENTS ARE RELATIVE TO MAXIMUM SIGNAL RESPONSE IN THE PASS BAND.
3. CARRIER FREQUENCY: 250.000 KCS.
4. CARRIER SUPPRESSION: AT LEAST 55DB.
5. -1DB POINTS: NOT HIGHER THAN 257.500 & NOT LOWER THAN 250.250 KCS
6. -60DB POINTS: 250.000 KCS MINIMUM AND 257.920 KCS MAXIMUM.
7. MAXIMUM PASS BAND RIPPLE: 1DB.
8. INSERTION LOSS OR GAIN 20 DB MAXIMUM.
9. INPUT IMPEDANCE: 10K OHMS UNBALANCED.
10. OUTPUT IMPEDANCE: 10K OHMS UNBALANCED.
11. PASS BAND RESPONSE VS. TEMPERATURE:
 - ± .5 db FROM + 15°C TO + 55°C
 - ± 1.5db FROM - 30°C TO + 15°C
 - ± 3.0db FROM - 40°C TO - 30°C

NOTE: CHANNEL DESIGNATION REFERS TO 250.000 KCS FURTHER SIDEBAND INVERSIONS MUST BE TAKEN INTO ACCOUNT IN DETERMINING THE FINAL CHANNEL DESIGNATION.

MECHANICAL SPECIFICATIONS:

CASE: STEEL
 FINISH: TMC GRAY (S-115) OR POWDER BLASTED BRIGHT NICKEL
 NOTE: TERMINAL END UNPAINTED
 MOUNTING: 6-32 X 3/8 STUDS (4 required)
 TERMINAL: DOUBLE END PIN TYPE, BRASS, SILVER PLATED, TEF, INS.

FX 240
 UPPER SIDE BAND
 FILTER
 THE TECHNICAL MATERIEL
 CORPORATION
 MAMARONECK NEW YORK



MARKING PROCESS: AS PER TMC SPECIFICATION S-727.

NOTES

1	SBE-9	
Q'TY./UNIT	MODEL USED ON	ASS'Y. NO.
SCALE 1:1	CODE C	

THE CONTENTS OF THIS DRAWING ARE THE EXCLUSIVE PROPERTY OF THE TECHNICAL MATERIEL CORP. ITS UNAUTHORIZED USE OR REPRODUCTION IN WHOLE OR IN PART IS STRICTLY FORBIDDEN.

REQ'D.	ITEM	PART NUMBER	DESCRIPTION	SYMBOL
O. POSE LIST OF MATERIAL				
MATERIAL		THE TECHNICAL MATERIEL CORP. MAMARONECK, NEW YORK		
FINISH		TITLE FILTER, BANDPASS UPPER SIDE BAND - 7.5 KC-		
UNLESS OTHERWISE SPECIFIED DIMENSIONS ARE IN INCHES AND INCLUDE CHEMICALLY APPLIED OR PLATED FINISHES		DRAWN G.D.L.	DATE 9-13-65	FINAL APPROVAL [Signature] 8/7/69
DECIMALS .X ± .05 .XX ± .01 .XXX ± .005		CHECKED [Signature]	DATE	
FRACTIONS ± 1/64 ANGLES ± 0° 30'		ELECT. DES.	DATE	
TOLERANCES		MECH. DES.	DATE	
		SHEET		REV. LTR.