

FX 231

THE CONTENTS OF THIS DRAWING ARE THE EXCLUSIVE PROPERTY OF THE TECHNICAL MATERIEL CORP. ITS UNAUTHORIZED USE OR REPRODUCTION IN WHOLE OR IN PART IS STRICTLY FORBIDDEN.

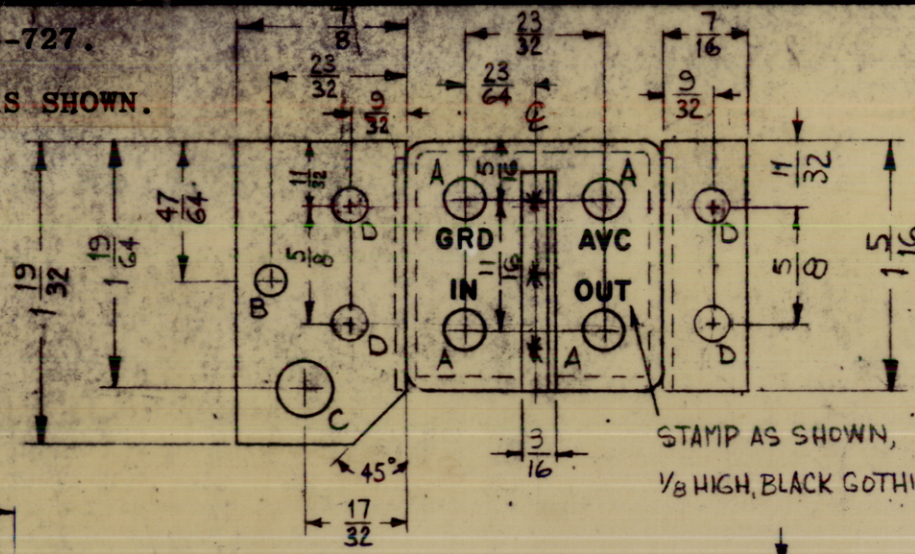
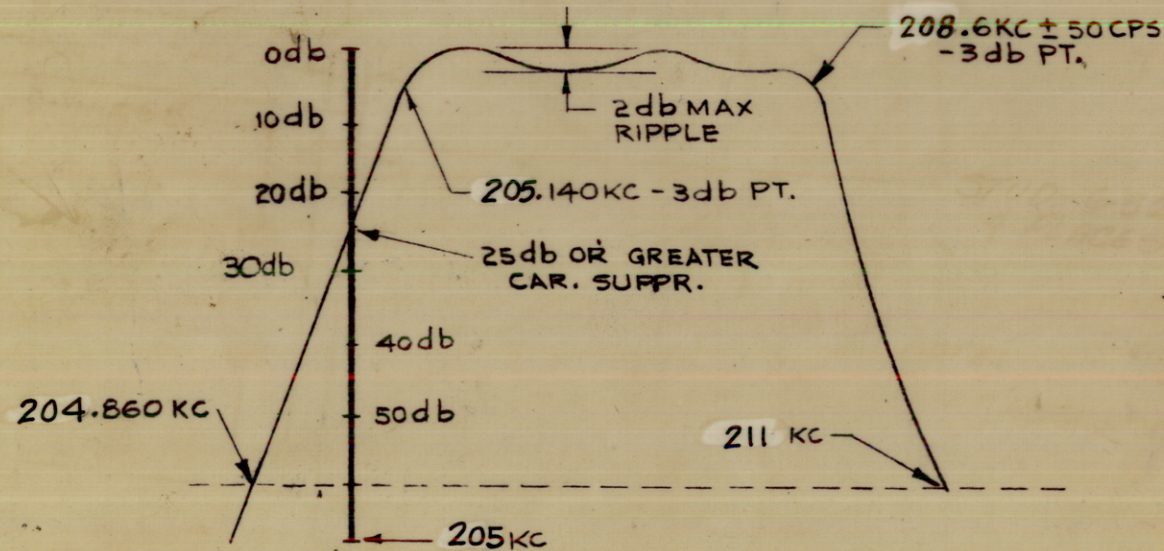
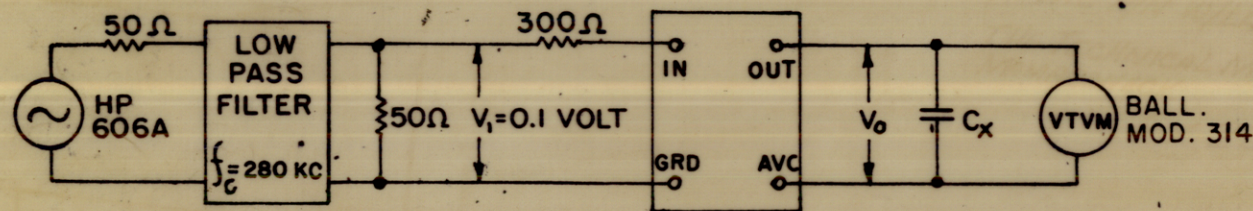
MARKING PROCESS: AS PER TMC SPECIFICATION S-727.

LETTERING: 1/8 HIGH BLACK GOTHIC, LOCATED AS SHOWN.

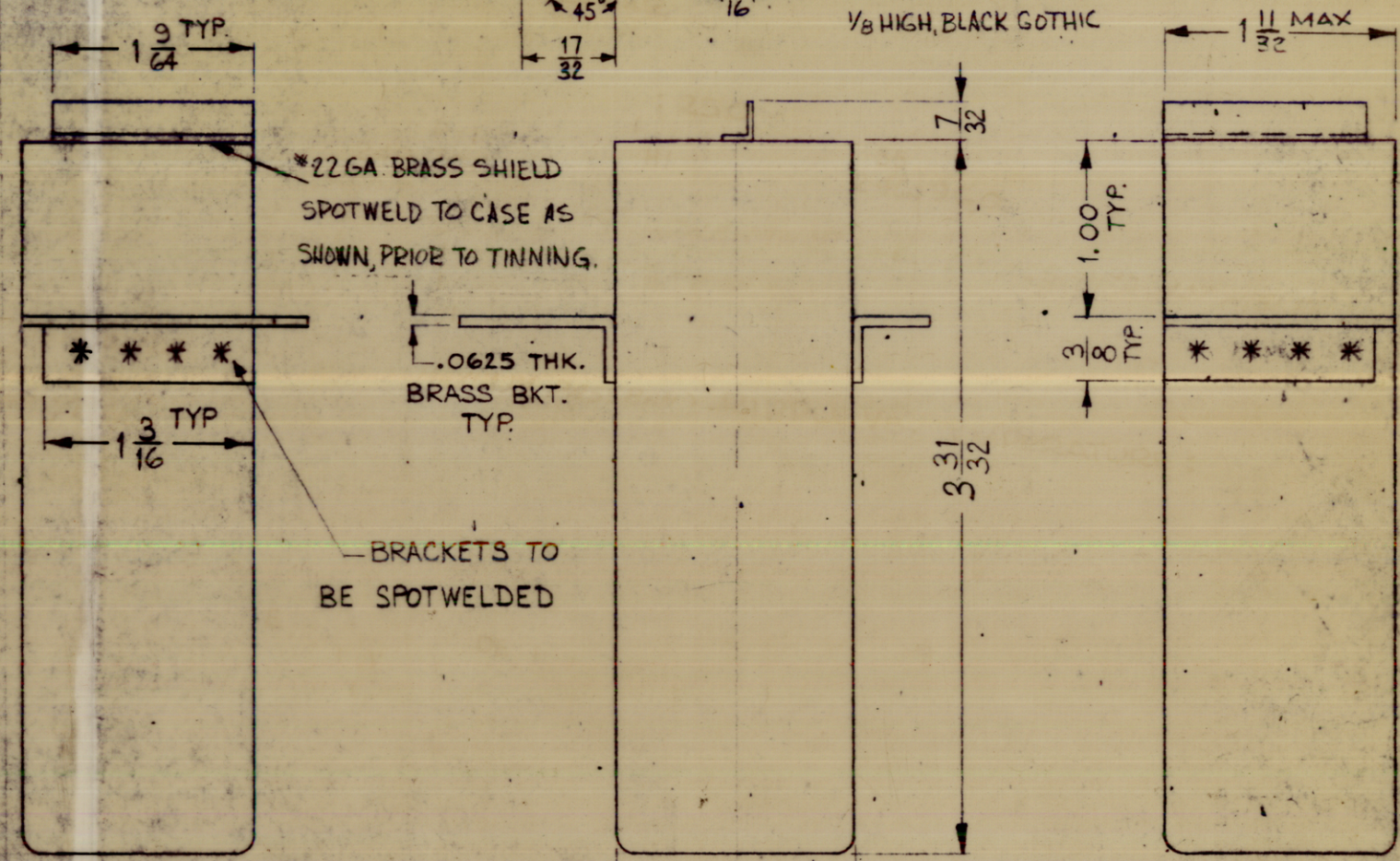
ELECTRICAL SPECIFICATIONS

1. TYPE - UPPER SIDEBAND
2. db MEASUREMENTS - ALL db MEASUREMENTS ARE RELATIVE TO MAXIMUM SIGNAL RESPONSE IN PASSBAND.
3. CARRIER FREQUENCY - 205 KC.
4. CARRIER SUPPRESSION - -25db OR GREATER.
5. -3db POINTS - 205.140 KC OR LESS; 208.6 KC +50CPS.
6. -60db POINTS - 204.860 KC OR GREATER; 211.0 KC OR LESS. ALL RETURN LOBES AND SPURIOUS SHALL BE -60db OR GREATER, OVER THE RANGE OF +50 KC FROM CARRIER FREQUENCY.
7. MAXIMUM PASSBAND RIPPLE .2db.
8. INSERTION (LOSS OR GAIN): - +3db +1db.
9. INPUT IMPEDANCE - 300 OHMS (NOMINAL).
10. OUTPUT IMPEDANCE - NOT TO EXCEED 50 K OHMS (INTERNALLY TERMINATED)
11. D.C. RESISTANCE ACROSS OUTPUT - NOT TO EXCEED 5 K OHMS.
12. TEMPERATURE RANGE - 0° TO 70° C.

SEE TEST PROCEDURE S-764. INSERTION (LOSS OR GAIN) = $\pm(V_0 - V_1)$ IN DB.



- A - .209 DIA. 4 REQ
- B - 5/32 DIA. 1 "
- C - 9/32 DIA. 1 "
- D - 1/16 DIA. 4 "



FX 231-3.5KC USB

STAMP AS SHOWN 1/8 HIGH BLACK GOTHIC. W/LATEST REV. LETTER

Ø	ORIGINAL RELEASE FOR PRODUCTION	3-10-61	L.A.K.		
X1	ADDED "OR BRUSHED NICKEL" TO FINISH	8/25/66	X1	CE D	

DESCRIPTION	DATE	CH. NO.	DRAFTS	CHECKER	ENG. APP.
UNLESS OTHERWISE SPECIFIED:	SCALE: DO NOT SCALE (S401-308)				
DIMENSIONS ARE IN INCHES	MAXIMUM ALLOWABLE TOLERANCES HAVE BEEN DETERMINED AND ANY DEVIATIONS WILL BE CAUSE FOR REJECTION.				
TOLERANCES ON FRACTIONS ± 1/64 DECIMALS ± .005 ANGLES ± 1/2°	REMOVE ALL BURRS AND SHARP EDGES.				

REQ. PER UNIT	MODEL	SECTION	ASS'Y. NO.	DATE
1	SBS-7			6-28-65

REQ. ITEM	PART NO.	POSE	DESCRIPTION	SYMBOL
THE TECHNICAL MATERIEL CORP. MAMARONECK, NEW YORK				
STOCK SIZE		FILTER, ASYMMETRICAL CRYSTAL		
MATERIAL		3.5 KC UPPER SIDEBAND		
HOT TIN DIP		W. Austin		
TYPE & TEMPER		HEAT TREAT. SPEC.	CHECKER	FINAL APPROVAL
S115 TMC SMOOTH GRAY ENAMEL OR BRUSHED NICKEL				
FINISH & SPEC. NO.		ELEC. DES. APP.	MECH. DES. APP.	
				FX 231