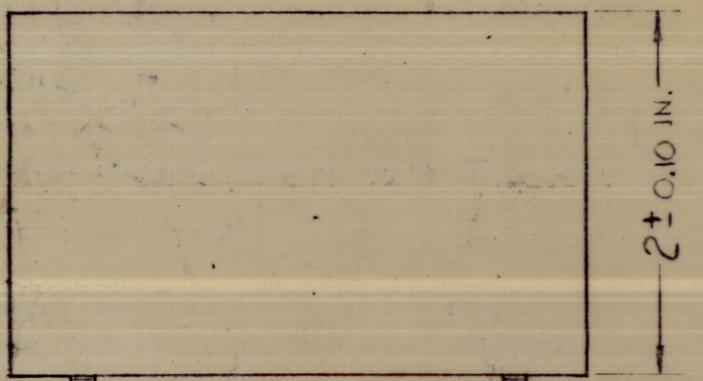


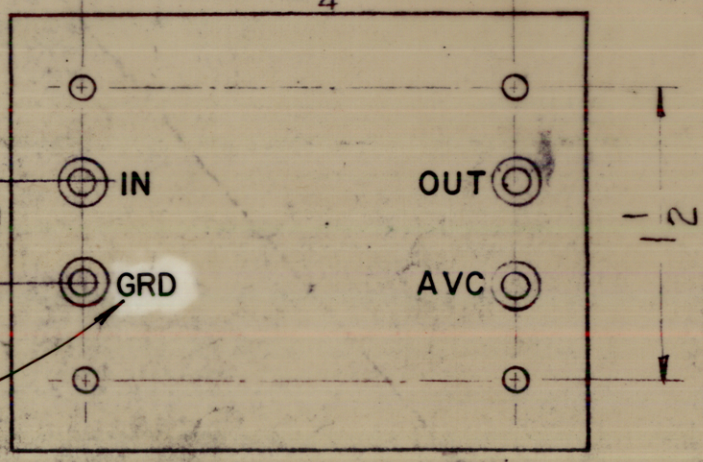
FX 229



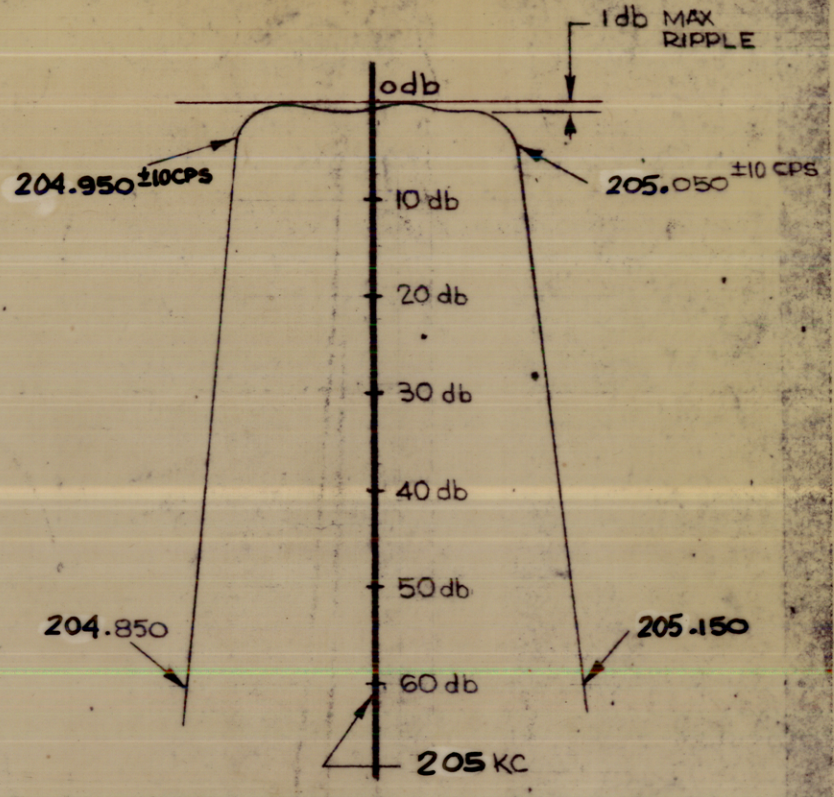
MARK TMC PT. NO. W/LATEST REV. LETTER



6-32 THDS



MARK TERMINALS AS SHOWN

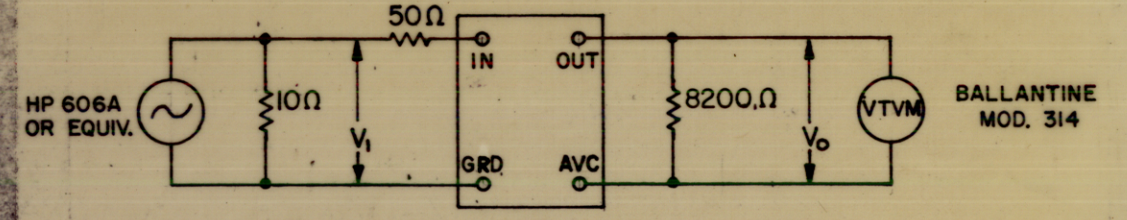


**ELECTRICAL SPECIFICATIONS**

1. TYPE: SYMMETRICAL.
2. db MEASUREMENTS: ALL db MEASUREMENTS ARE RELATIVE TO MAXIMUM SIGNAL RESPONSE IN PASSBAND.
3. FREQUENCY: 205 KC.
4. -3 db POINTS: 205.050 KC +10 CPS, 204.950 +10 CPS
5. -60 db POINTS: 205.150 OR LESS, 204.850 OR GREATER.
6. ALL RETURN LOBES AND SPURIOUS SHALL BE -60 db OR GREATER.
7. MAXIMUM PASSBAND RIPPLE: 1 db.
8. INSERTION (LOSS OR GAIN): + 11db MINIMUM.
9. INPUT IMPEDANCE: 50 OHMS.
10. OUTPUT IMPEDANCE: 8.2 K OHMS.
11. TEMPERATURE RANGE: 0° TO 70° C.

MARKING PROCESS: AS PER TMC SPECIFICATION S-727.  
 LETTERING: 1/8 HIGH BLACK GOTHIC, LOCATED AS SHOWN.

INSERTION (LOSS OR GAIN) = ±(V<sub>O</sub>-V<sub>I</sub>) IN db.



**PERSONS RECEIVING THIS DRAWING**

THE TECHNICAL MATERIEL CORPORATION claims proprietary right in the material disclosed herein. This drawing is issued in confidence for engineering information only and may not be reproduced or used to manufacture anything shown hereon without permission from THE TECHNICAL MATERIEL CORPORATION to the effect. This drawing is loaned for mutual assistance and is subject to recall at any time.

Property of:  
 THE TECHNICAL MATERIEL CORPORATION  
 MAMARONECK, NEW YORK  
**STANDARD DRAWING**

Ø	ORIGINAL RELEASE FOR PRODUCTION	3-10-67				L.R.K.	JHE
X1	ADDED "OR BRUSHED NICKEL" TO FINISH	8/25/66	X1	CE D	OCB		
SYM	DESCRIPTION	DATE	CH. NO.	DRAFTS	CHECKER	ENG. APP.	
UNLESS OTHERWISE SPECIFIED:		SCALE: S401-308					
DIMENSIONS ARE IN INCHES		MAXIMUM ALLOWABLE TOLERANCES HAVE BEEN DETERMINED AND ANY DEVIATIONS WILL BE CAUSE FOR REJECTION. REMOVE ALL BURRS AND SHARP EDGES					
TOLERANCES ON FRACTIONS ± 1/64 DECIMALS ± .005 ANGLES ± 1/2°		REQ. PER UNIT					

AFC-7			6-28-65
MODEL	SECTION	ASSY. NO.	DATE
USED ON			

REQ.	ITEM	PART NO.	DESCRIPTION	SYMBOL
			THE TECHNICAL MATERIEL CORP. MAMARONECK, NEW YORK	
			STEEL CASE	
			MATERIAL	
			STOCK SIZE	
			100 CPS	
			8200Ω	
			50Ω	
			10Ω	
			HP 606A OR EQUIV.	
			VTVM	
			BALLANTINE MOD. 314	
			H. AUSTIN	
			OCB	
			JHE	
			FX 229	
			FINISH & SPEC. NO.	
			ELEC. DES. APP.	
			MECH. DES. APP.	