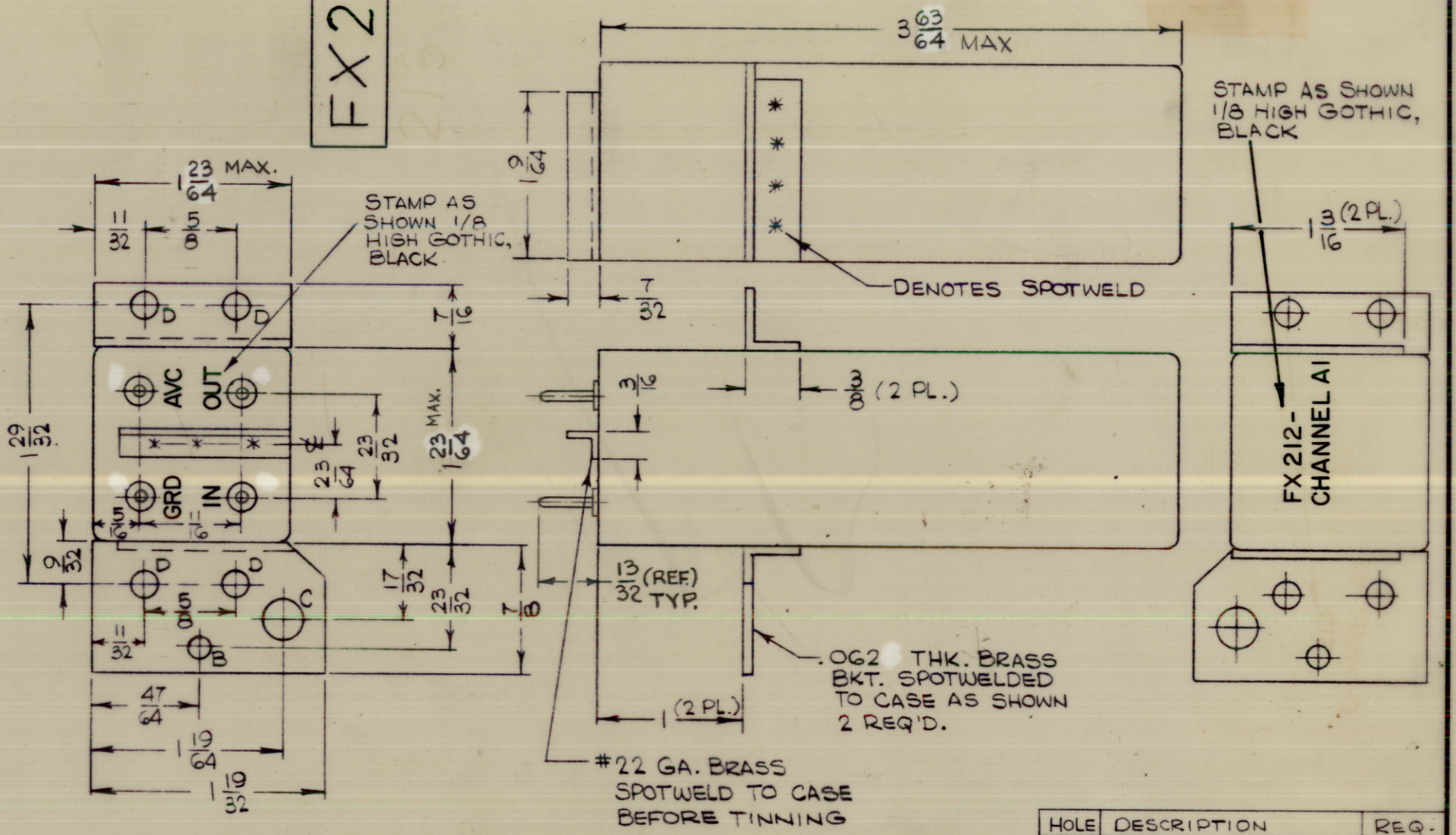
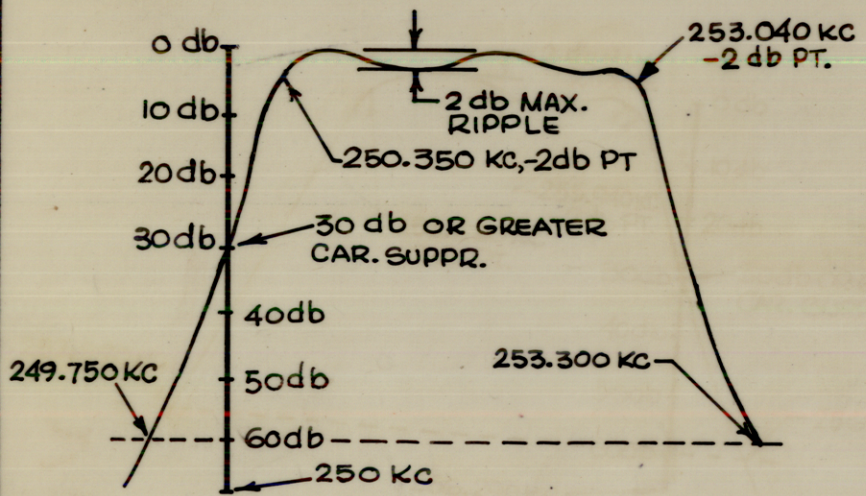


ELECTRICAL SPECIFICATIONS

1. TYPE: INNER UPPER SIDEBAND
2. DB MEASUREMENTS: ALL DB MEASUREMENTS ARE RELATIVE TO MAXIMUM SIGNAL RESPONSE IN PASSBAND.
3. CARRIER FREQUENCY: 250 KC
4. CARRIER SUPPRESSION: -30 DB OR GREATER.
5. -2 DB POINTS: 250.350 KC OR LESS; 253.040 KC OR GREATER.
6. -60DB POINTS: 249.750 KC OR GREATER; 253.300 KC OR LESS.
ALL RETURN LOBES AND SPURIOUS SHALL BE -60DB OR GREATER, OVER THE RANGE OF ± 50 KC FROM CARRIER FREQ.
7. MAX. PASSBAND RIPPLE: 2 DB
8. INSERTION (LOSS OR GAIN): -3DB ± 1 DB
9. INPUT IMPEDANCE: 300 OHMS (NOMINAL)
10. OUTPUT IMPEDANCE: (NOT TO EXCEED 50K OHMS INTERNALLY TERMINATED) $C_X = 10.5$ PF
11. D.C. RESISTANCE ACROSS OUTPUT: NOT TO EXCEED 5K OHMS
12. PASSBAND RESPONSE VS TEMPERATURE:
 ± 1.0 DB FROM $+15^\circ\text{C}$ TO $+55^\circ\text{C}$
 ± 1.5 DB FROM -30°C TO $+15^\circ\text{C}$
 ± 3.0 DB FROM -40°C TO -30°C
13. ENVELOPE DELAY SHALL NOT EXCEED ± 350 MICROSECONDS FROM NOMINAL OVER 80 PER CENT OF THE FILTER PASSBAND.

A
FX212

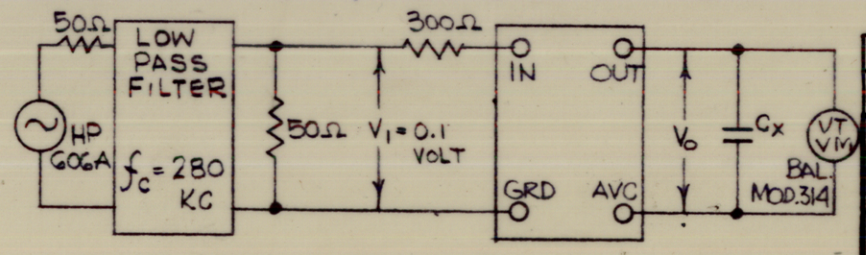
REVISIONS						
SYM	DESCRIPTION	DATE	E.M.N. NO.	DRAFT	CHKD	APPD
\emptyset	ORIGINAL RELEASE FOR PROD.	2/21/66				
A	REVISED PER EMN	6-23-66	16643			



SEE TEST PROCEDURE S764. INSERTION (LOSS OR GAIN) = $\pm (V_o - V_i)$ IN DB

NOTE: TERMINAL DIM. ARE REF.

HOLE	DESCRIPTION	REQ.
B	5/32 DIA.	1
C	9/32 DIA.	1
D	3/16 DIA.	4



FINISH: MOUNTING BRACKETS DO NOT PAINT EDGES, TOP AND BOTTOM SURFACES OF MOUNTING BRACKETS.

NOTES

1	MSAA-1	
Q'TY./UNIT	MODEL USED ON	ASS'Y. NO.
SCALE	CODE	
	C	

THE CONTENTS OF THIS DRAWING ARE THE EXCLUSIVE PROPERTY OF THE TECHNICAL MATERIEL CORP. ITS UNAUTHORIZED USE OR REPRODUCTION IN WHOLE OR IN PART IS STRICTLY FORBIDDEN.

REQ'D.	ITEM	PART NUMBER	DESCRIPTION	SYMBOL
LIST OF MATERIAL				
MATERIAL		BRASS		
FINISH		HOT TIN DIP S115 TMC SMOOTH GREY ENAMEL - SEE MTG. BRKT. NOTE		
TITLE		THE TECHNICAL MATERIEL CORP. MAMARONECK, NEW YORK FILTER CRYSTAL, ASYMMETRICAL INNER UPPER SIDEBAND		
DRAWN		H. AUSTIN	DATE	7-28-65
CHECKED			DATE	
ELECT. DES.			DATE	
MECH. DES.			DATE	
FINAL APPROVAL				DATE
FX212				2/21/66
SHEET				REV. LTR.
A				