

# STANDARD DRAWING

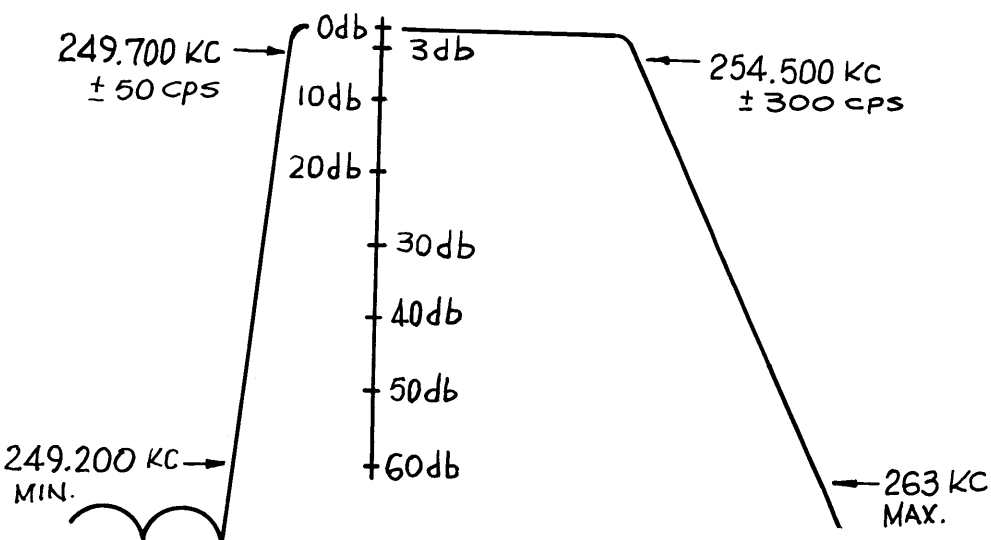
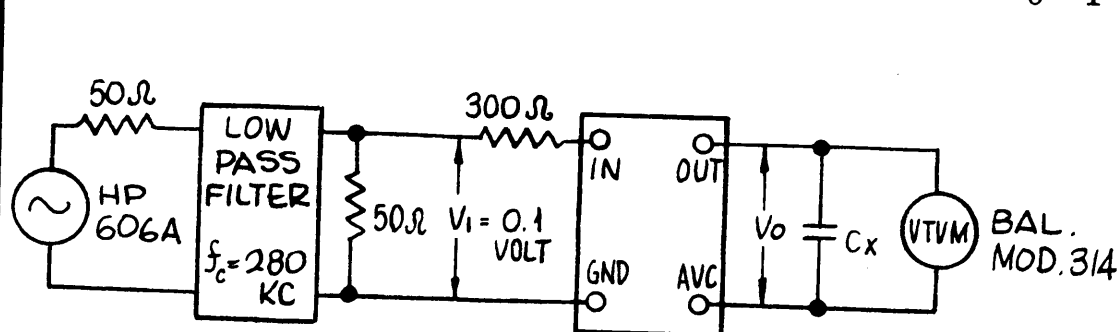
## ELECTRICAL SPECIFICATIONS

1. TYPE: UPPER SIDEBAND
2. db MEASUREMENTS: ALL db MEASUREMENTS ARE RELATIVE TO MAX. SIGNAL RESPONSE IN PASSBAND.
3. CARRIER FREQ: SEE ATTEN. CHARACTERISTIC
4. CARRIER SUPPR: SEE ATTEN. CHARACTERISTIC
5. -3db POINTS: 249.700 kc  $\pm$  50 cps -254.500 kc  $\pm$  300 cps
6. -60db POINTS: 249.200 kc MIN - 263 kc MAX  
ALL RETURN LOBES AND SPURIOUS SHALL BE -60 db OR GREATER, OVER THE RANGE OF  $\pm$ 50KC FROM CARRIER FREQUENCY.
7. MAXIMUM PASSBAND RIPPLE: 2.5 db
8. INSERTION (LOSS OR GAIN):  $\pm$  3 db  $\pm$  1 db
9. INPUT IMPEDANCE: 300 OHMS (NOMINAL)
10. OUTPUT IMPEDANCE: NOT TO EXCEED 12.5K OHMS (INTERNALLY TERMINATED)
11. D.C. RESISTANCE ACROSS OUTPUT: NOT TO EXCEED 5K OHMS.
12. TEMP. RANGE: 0° TO 70°C

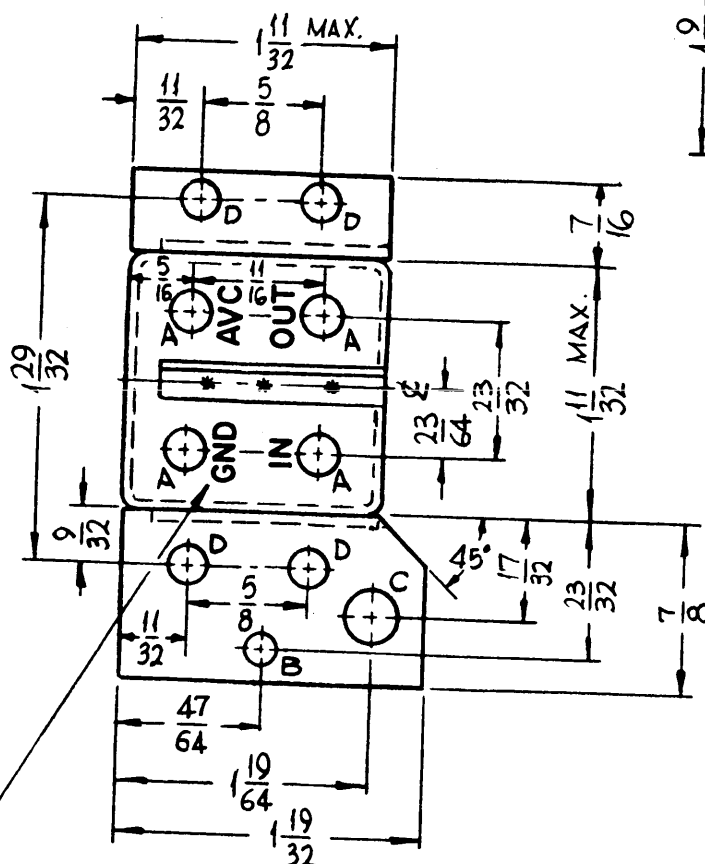
FX 203	REVISION						
	SYM	DESCRIPTION	DATE	E.M.N. NO.	DRAFT	CHKD	APPD
	X	EXPERIMENTAL RELEASE	10-5-64	X	SRG		
	Ø	ORIGINAL RELEASE FOR PRODUCTION	10.15.64	Ø	JTB		
	A	ADDED "OR BRUSHED NICKEL" TO FINISH	8/25/64	16772	CED	JTB	X

SEE TEST PROCEDURE

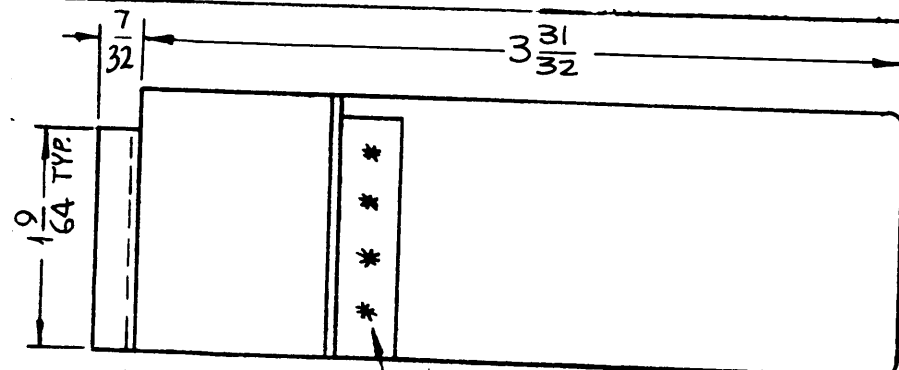
INSERTION (LOSS OR GAIN) =  $\pm (V_0 - V_1)$  IN DB



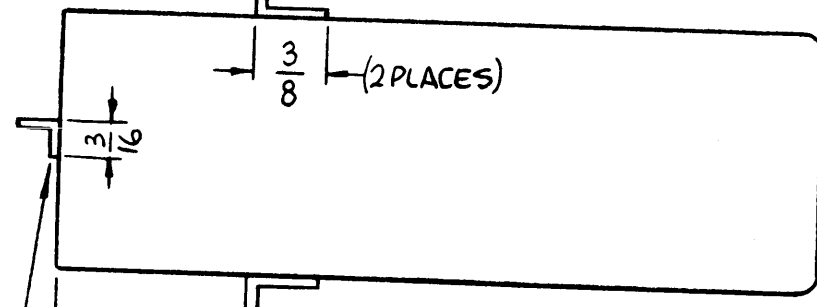
ATTENUATION CHARACTERISTIC



STAMP AS SHOWN  
1/8 HIGH GOTHIC, BLACK.

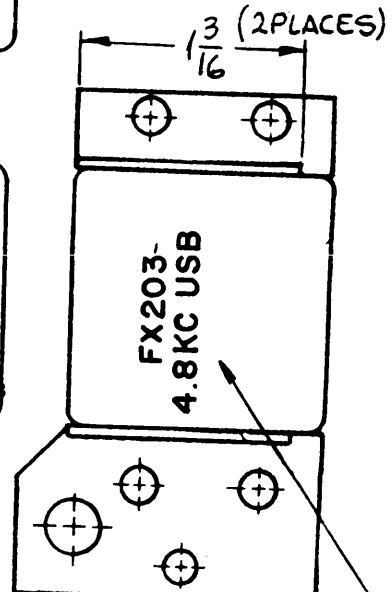


DENOTES SPOTWELD



.0625 THK. BRASS  
BKT. SPOTWELDED  
TO CASE AS SHOWN  
(2 REQ'D)

\* 22 GA. BRASS  
SPOTWELD TO CASE  
BEFORE TINNING.



STAMP AS SHOWN  
1/8 HIGH GOTHIC,  
BLACK. W/LATEST  
REV. LETTER

HOLE	DESCRIPTION	REQ.
A	209 DIA.	4
B	5/32 DIA.	1
C	9/32 DIA.	1
D	3/16 DIA.	4

## STANDARD DRAWING

FINISH; MTG. BRACKETS:  
DO NOT PAINT EDGES, TOP & BOTTOM  
SURFACES OF MTG. BRACKETS.

### NOTES

KIT 190		
Q'TY./UNIT	MODEL USED ON	ASS'Y. NO.
SCALE 1:1	CODE C	5401-210

THE CONTENTS OF THIS DRAWING ARE THE EXCLUSIVE PROPERTY OF THE TECHNICAL MATERIEL CORP. ITS UNAUTHORIZED USE OR REPRODUCTION IN WHOLE OR IN PART IS STRICTLY FORBIDDEN.

REQ'D.	ITEM	PART NUMBER	DESCRIPTION	SYMB L
LIST OF MATERIAL				
MATERIAL BRASS			THE TECHNICAL MATERIEL CORP. MAMARONECK, NEW YORK	
FINISH HOTTIN DIP, S115 TMC SMOOTH GRAY ENAMEL OR BRUSHED NICKEL. SEE MTG. BKT. NOTE			TITLE FILTER BAND PASS 4.8 KC BW 250 KC USB	
UNLESS OTHERWISE SPECIFIED DIMENSIONS ARE IN INCHES AND INCLUDE CHEMICALLY APPLIED OR PLATED FINISHES				
DRAWN SRG		DATE 10-5-64		FINAL APPROVAL
CHECKED @		DATE 10-8-64		DATE
ELECT. DES. JC		DATE 10/15/64		REV. LTR. A
MECH. DES.		DATE		SHEET

## STANDARD DRAWING