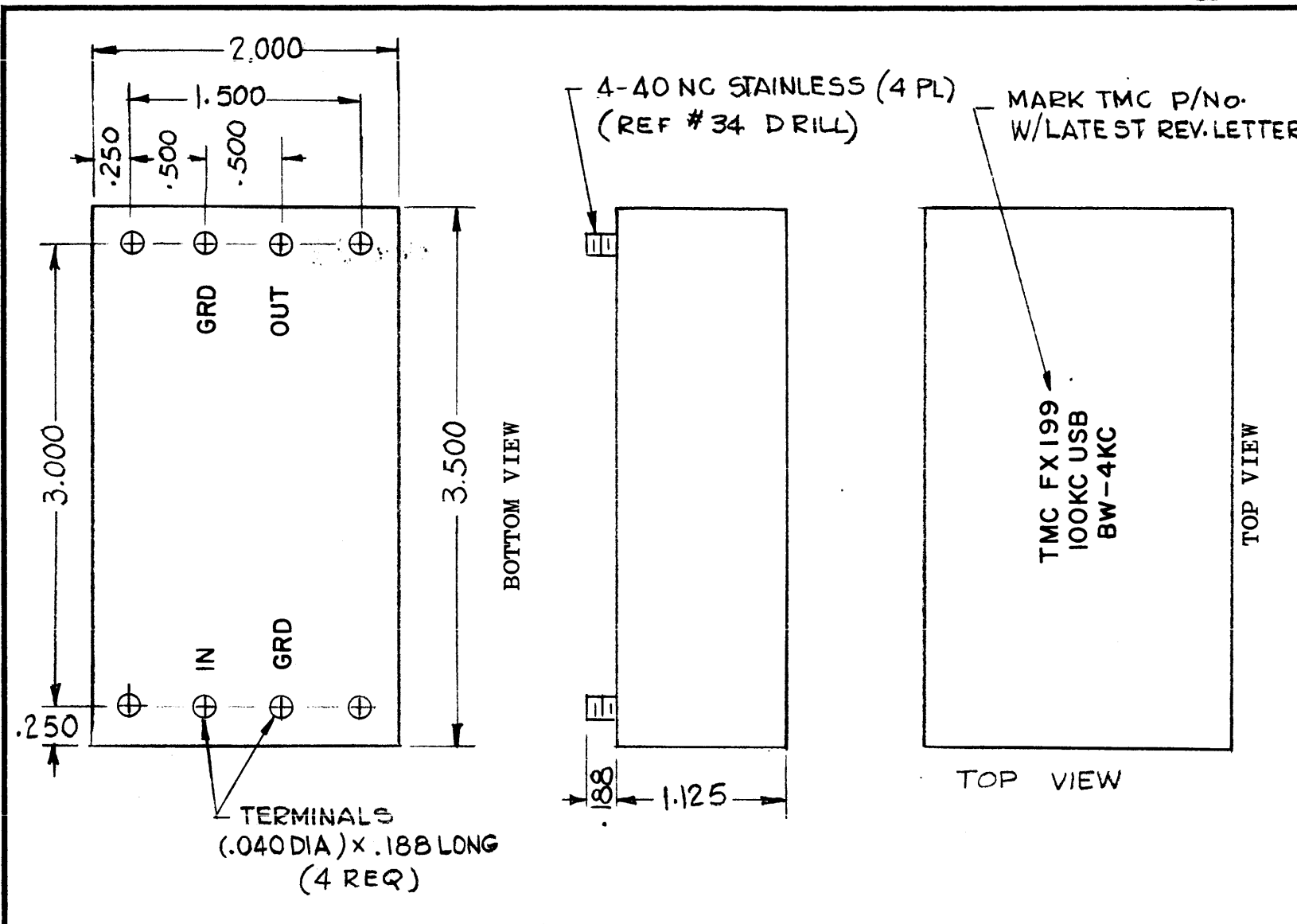


STANDARD DRAWING



REVISIONS						
SYM	DESCRIPTION	DATE	E.M.N. NO.	DRAFT	CHKD	APPD
X	EXPER. RELEASE	12-23-64		G.D.L		
Ø	ORIGINAL RELEASE FOR PRODUCTION	12.31.64	Ø	ASB		

FX199

ELECTRICAL SPECIFICATIONS

1. TYPE: BAND PASS, CRYSTAL
2. db MEASUREMENT ARE RELATIVE TO MAXIMUM SIGNAL RESPONSE IN PASS BAND
3. CARRIER FREQUENCY: 100.000Kc
4. CARRIER SUPPRESSION: 20db MIN.
5. 3 db POINTS: 100.250 Kc MAX, 104.000 KC MINIMUM
6. 60 db POINTS; 99.750Kc MAX, 107,000 Kc MAX.
ALL RETURN LOBES AND SPURIOUS SHALL BE -60db OR GREATER OVER THE RANGE OF ± 50Kc FROM CARRIER.
7. MAXIMUM PASS BAND RIPPLE: 2.5db MAX.
8. VOLTAGE LOSS OR GAIN: 0db ± 2db
9. INPUT IMPEDANCE: 10K Ω ± 5% RESISTIVE
10. OUTPUT IMPEDANCE: 1000Ω ± 5% RESISTIVE

ENVIRONMENTAL SPECIFICATIONS

1. TEMPERATURE RANGE: 0° - 70°C

MECHANICAL SPECIFICATIONS

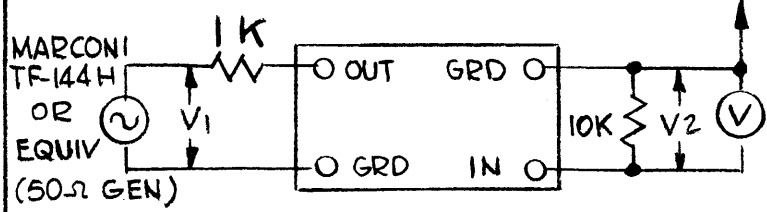
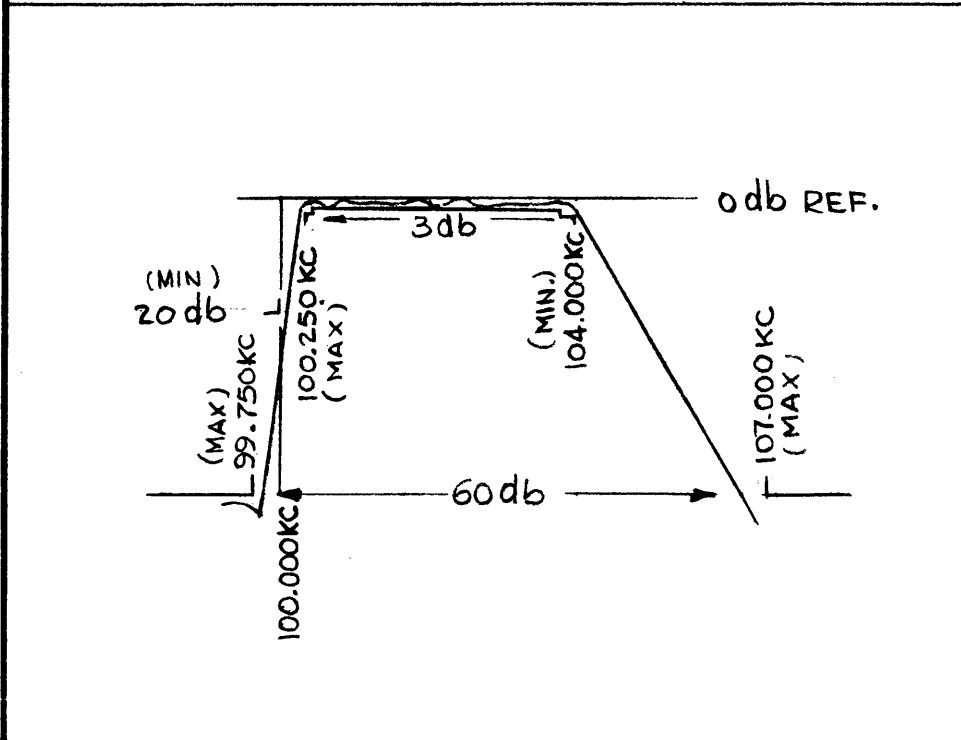
1. HERMETICALLY SEALED
2. MARKING: 1/8" HIGH GOTHIC, BLACK
3. TERMINALS: PIN TYPE

TEST CIRCUIT

1. TO MEASURE 60 db, FILTER SOURCE AND LOAD IS REVERSED
2. VOLTAGE LOSS DEFINED AS:

HP 400LR OR EQUIV. $I.L. = 20 \log_{10} \frac{V_1}{V_2} = 0db \pm 2db$

AT POINT OF MINIMUM LOSS IN FILTER PASS BAND.
NOTE: CAPACITY OF VTVM AND CONNECTING CABLES MUST BE TURNED OUT SEE S-764 FOR REFERENCE ONLY.



TEST CIRCUIT

STANDARD DRAWING

Q'TY./UNIT	MODEL USED ON	ASS'Y. NO.
SCALE	CODE	
1:1		

THE CONTENTS OF THIS DRAWING ARE THE EXCLUSIVE PROPERTY OF THE TECHNICAL MATERIEL CORP. ITS UNAUTHORIZED USE OR REPRODUCTION IN WHOLE OR IN PART IS STRICTLY FORBIDDEN.

REQ'D.	ITEM	PART NUMBER	DESCRIPTION	SYMBOL
			LIST OF MATERIAL	
			BRASS	
			THE TECHNICAL MATERIEL CORP.	
			MAMARONECK, NEW YORK	
			FINISH BRUSH, BRIGHT NICKEL PLATE	
			TITLE FILTER BANDPASS 4KC BW 100 KC LSB	
			UNLESS OTHERWISE SPECIFIED DIMENSIONS ARE IN INCHES AND INCLUDE CHEMICALLY APPLIED OR PLATED FINISHES	
			DECIMALS	
			FRACTIONS	
			TOLERANCES	
			ANGLES	
			± 0° 30'	
			DRAWN G.D.L	
			DATE 12-23-64	
			CHECKED @	
			DATE 12-31-64	
			ELECT. DES.	
			DATE	
			MECH. DES.	
			DATE 1-4-65	
			SHEET	
			FX199	
			REV. LTR.	

NOTES

STANDARD DRAWING