

STANDARD DRAWING

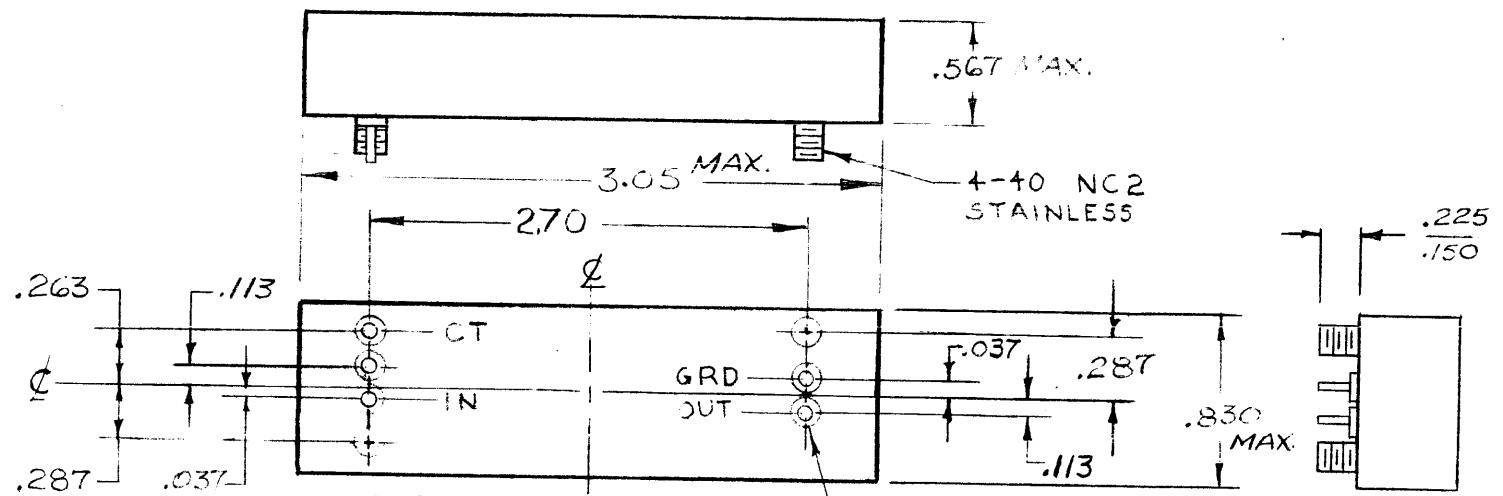
A
FX198

REVISIONS

SYM	DESCRIPTION	DATE	E.M.N. NO.	DRAFT	CHKD	APPD
Ø	ORIGINAL RELEASE FOR PRODUCTION	10-16-64		9c		
A	COMPLETELY REVISED DIMENSIONS	11-30-64	18044	ENJ		EFM

TMC FX-198
6.4 MC SYM FILTER
8KC 3db BW

TOP VIEW MARKING

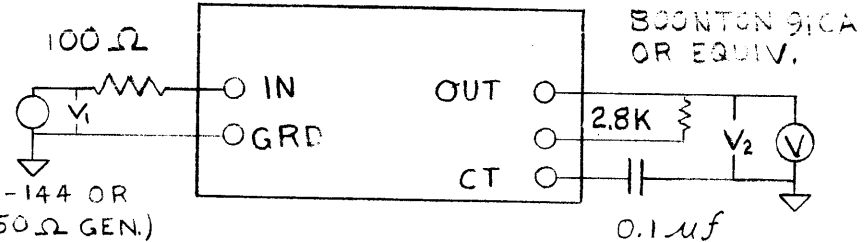


BOTTOM VIEW MARKING

ST. WIRE TERMINALS
.030 DIA. .188 LONG

FIGURE II
SEE SPEC. NO. 3

MARCONI TF-144 OR
EQUIVALENT (50 Ω GEN.)



TEST CIRCUIT
SEE SPEC. NO. 4

SPECIFICATIONS

- ELECTRICAL REQUIREMENTS: UNITS SHALL MEET THE FOLLOWING ELECTRICAL REQUIREMENTS OVER THE OPERATING TEMPERATURE RANGE.
 - SOURCE IMPEDANCE: 2.8K + 5% RESISTIVE (SEE TEST CIRCUIT).
 - LOAD IMPEDANCE: 150 + 5% RESISTIVE.
 - INSERTION LOSS: 3 db MAXIMUM (SEE TEST CIRCUIT).
 - PEAK TO VALLEY RATIO: ± 1 db MAXIMUM.
- ENVIRONMENTAL REQUIREMENTS:
 - OPERATING TEMPERATURE RANGE: 0 TO 70 C
- MECHANICAL REQUIREMENTS:
 - UNIT TO BE HERMETICALLY SEALED.
 - MARKING BLACK 1/8" HIGH GOTHIC.
- TEST CIRCUIT:
 - FOR PURPOSE OF TEST, FILTER SOURCE AND LOAD ARE REVERSED.
 - INSERTION LOSS: INSERTION LOSS IS DETERMINED AT POINT OF MINIMUM ATTENUATION AND IS DEFINED BY:

$$I.L. = 20 \log_{10} \frac{V_2}{V_1} = 3 \text{ db MAXIMUM}$$

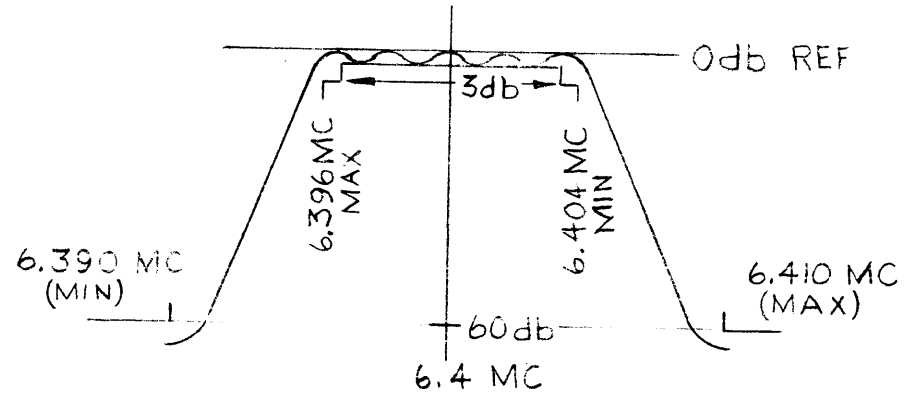


FIGURE I
ATTENUATION: SEE SPEC. NO. 1

STANDARD DRAWING

Q'TY./UNIT	MODEL USED ON	ASS'Y. NO.
	VLRB-1	
SCALE	CODE	S401-308
	C	

THE CONTENTS OF THIS DRAWING ARE THE EXCLUSIVE PROPERTY OF THE TECHNICAL MATERIEL CORP. ITS UNAUTHORIZED USE OR REPRODUCTION IN WHOLE OR IN PART IS STRICTLY FORBIDDEN.

REQ'D.	ITEM	PART NUMBER	DESCRIPTION	SYMBOL
LIST OF MATERIAL				
MATERIAL		THE TECHNICAL MATERIEL CORP. MAMARONECK, NEW YORK		
FINISH		TITLE FILTER, CRYSTAL, BAND PASS 8KC B.W. 6.4 MC SYMETRICAL		
UNLESS OTHERWISE SPECIFIED DIMENSIONS ARE IN INCHES AND INCLUDE CHEMICALLY APPLIED OR PLATED FINISHES		DRAWN <i>J. J. J.</i>	DATE 9-10-64	FINAL APPROVAL <i>[Signature]</i>
TOLERANCES		ELECT. DES.	DATE	
.X ± .05	FRACTIONS ± 1/64	MECH. DES.	DATE	
.XX ± .01	ANGLES ± 0° 30'			
.XXX ± .005				
		DATE 10/19/64		SHEET
		FX198		A
				REV. LTR.

NOTES