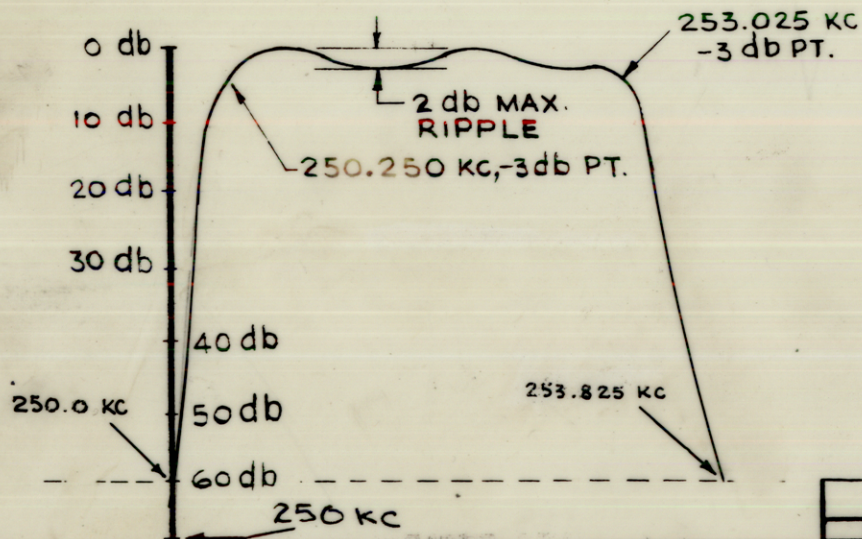
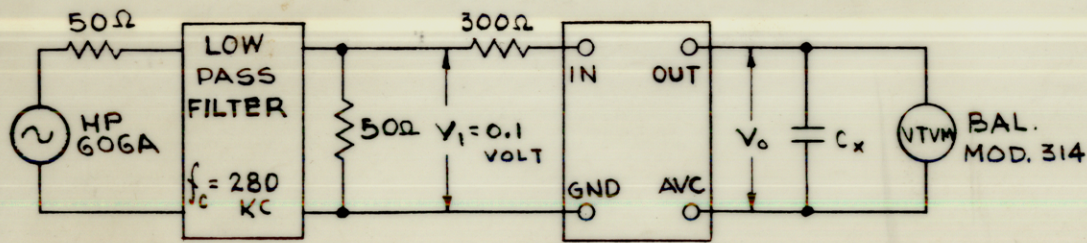


ELECTRICAL SPECIFICATIONS

1. Type: INNER UPPER SIDEBAND
2. db MEASUREMENTS: ALL db MEASUREMENTS ARE RELATIVE TO MAXIMUM SIGNAL RESPONSE IN PASSBAND.
3. CARRIER FREQUENCY: 250 KC
4. CARRIER SUPPRESSION: GREATER THAN 60 db
5. -3 db POINTS: 250.250KC OR LESS; 253.025 KC OR GREATER.
6. -60 db POINTS: 250.0 KC OR GREATER; 253.825 KC LESS. ALL RETURN LOBES AND SPURIOUS SHALL BE -60 db OR GREATER, OVER THE RANGE ±50 KC FROM CARRIER FREQUENCY.
7. MAXIMUM PASSBAND RIPPLE: 2 db
8. INSERTION (LOSS OR GAIN): +3 db±1 db.
9. INPUT IMPEDANCE: 300 OHMS (NOMINAL).
10. OUTPUT IMPEDANCE: NOT TO EXCEED 50K OHMS (INTERNALLY TERMINATED).
11. D.C. RESISTANCE ACROSS OUTPUT: NOT TO EXCEED 5K OHMS
12. TEMPERATURE RANGE: 0° TO 70° C.

SEE TEST PROCEDURE S-764. INSERTION (LOSS OR GAIN) = $\pm(V_0 - V_1)$ IN db

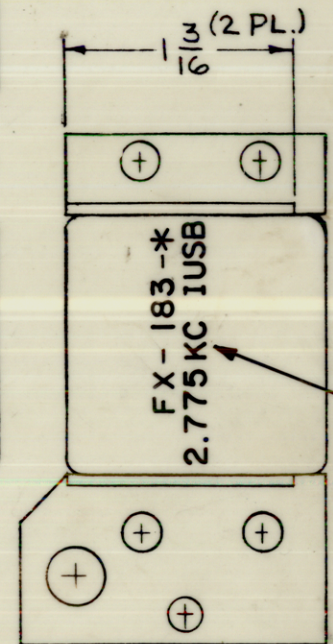
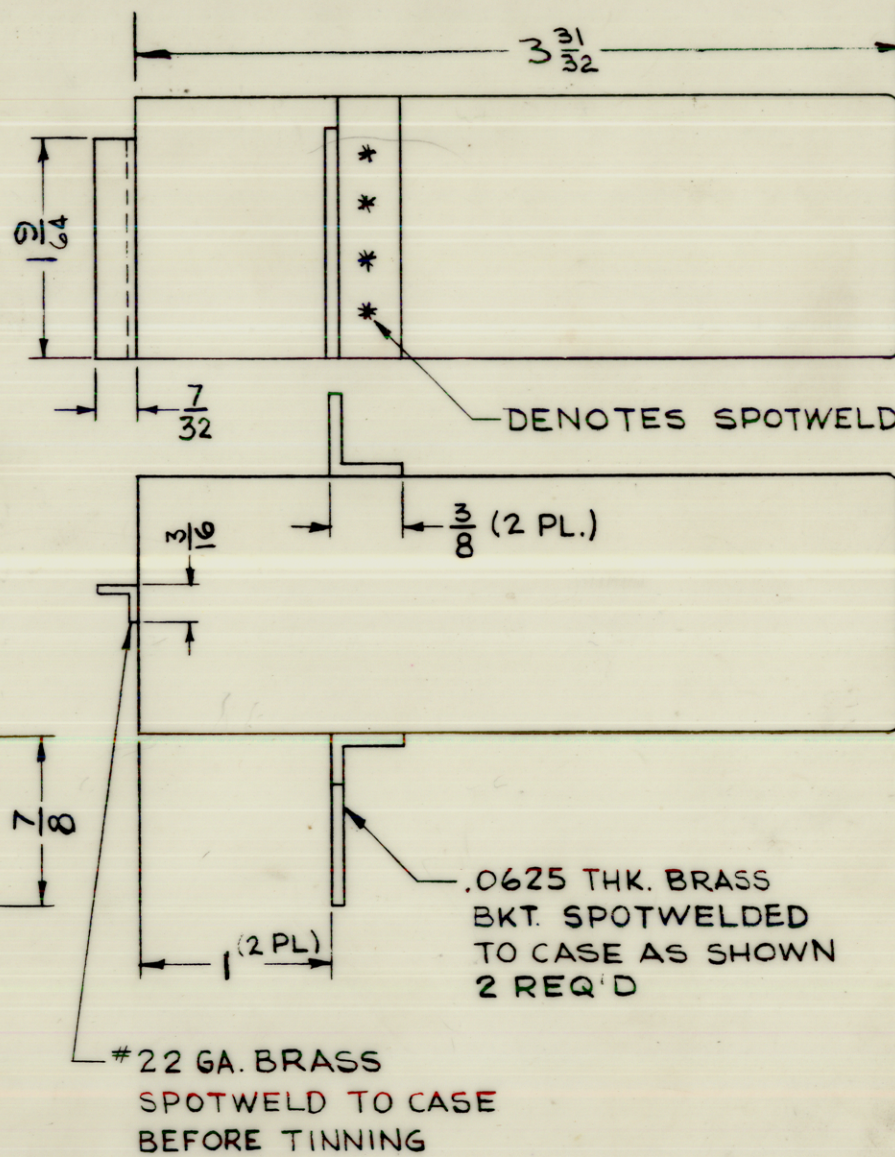
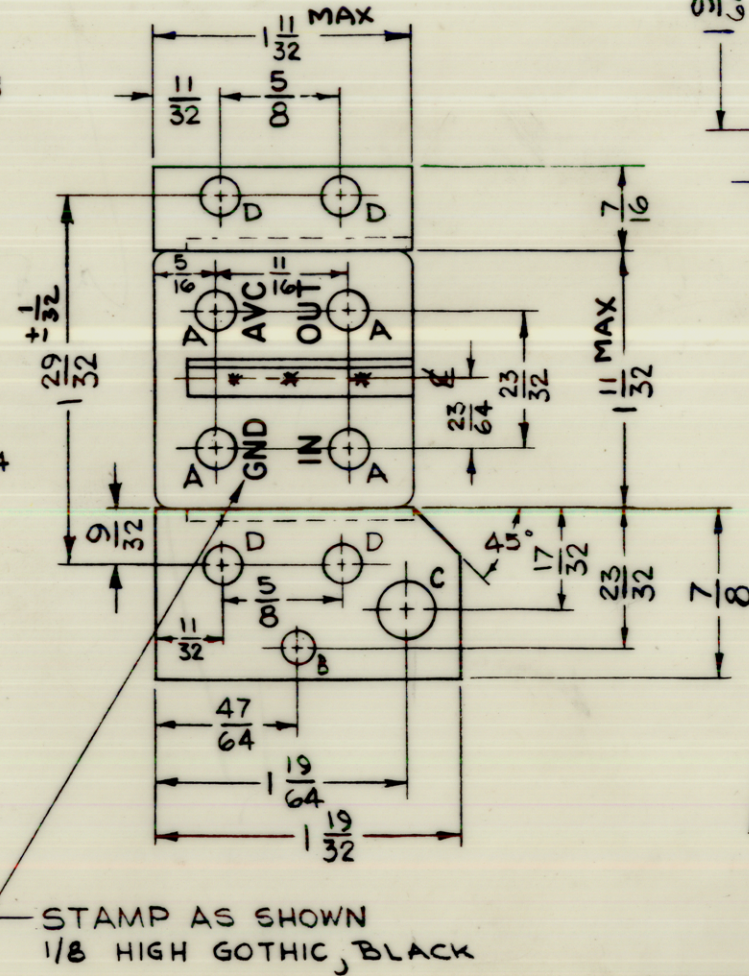


FINISH: MOUNTING BRACKETS DO NOT PAINT EDGES, TOP AND BOTTOM SURFACES OF MOUNTING BRACKETS.

LEGEND		
HOLE	DESCRIPTION	REQ'D
A	.209 DIA.	4
B	5/32 DIA.	1
C	9/32 DIA.	1
D	3/16 DIA.	4

B
FX-183

REVISIONS					
SYM	DESCRIPTION	DATE	E.M.N. NO.	DRAFT	CHKD
O	ORIGINAL RELEASE FOR PRODUCTION	4-17-64	0	A.M.	@
A	ON DIMS. 29/32, ± 1/32 ADD., ON 1/32, MAX ADD. (2 PL)	7-30-64	11982	WFB	JC
B	R.VIEW: (FX-183-*) WAS (FX-184-0); STAMP NOTE: "WITH LATEST REV. LETTER" ADD.	12-29-64	13161	J.F.	@



STAMP AS SHOWN WITH LATEST REVISION LETTER, 1/8 HIGH GOTHIC, BLACK.

REQ'D.	ITEM	PART NUMBER	DESCRIPTION	SYMBOL
T.K. AALTONEN LIST OF MATERIAL				
MATERIAL		THE TECHNICAL MATERIEL CORP.		
BRASS		MAMARONECK, NEW YORK		
FINISH		TITLE		
HOT TIN DIP		FILTER, CRYSTAL, ASYMMETRICAL		
S115 TMC SMOOTH GREY ENAMEL		2.775 KC INNER UPPER SIDEBAND		
SEE MOUNTING BRACKET NOTE				
UNLESS OTHERWISE SPECIFIED		DRAWN		DATE
DIMENSIONS ARE IN INCHES AND INCLUDE		T. RAMIREZ		2/26/64
CHEMICALLY APPLIED OR PLATED FINISHES		CHECKED		DATE
		@		3-12-64
DECIMALS		ELECT. DES.		DATE
.X ± .05		J.F.C.		2/27/64
.XX ± .01		MECH. DES.		DATE
.XXX ± .005		WFB		3-12-64
TOLERANCES		FINAL APPROVAL		DATE
FRACTIONS ± 1/64		R.F.		
ANGLES ± 0° 30'		FX-183		B
		SHEET		REV. LTR.

I	MSA-1	
Q'TY./UNIT	MODEL USED ON	ASS'Y. NO.
SCALE	CODE	
1:1	C	S401-129
THE CONTENTS OF THIS DRAWING ARE THE EXCLUSIVE PROPERTY OF THE TECHNICAL MATERIEL CORP. ITS UNAUTHORIZED USE OR REPRODUCTION IN WHOLE OR IN PART IS STRICTLY FORBIDDEN.		