

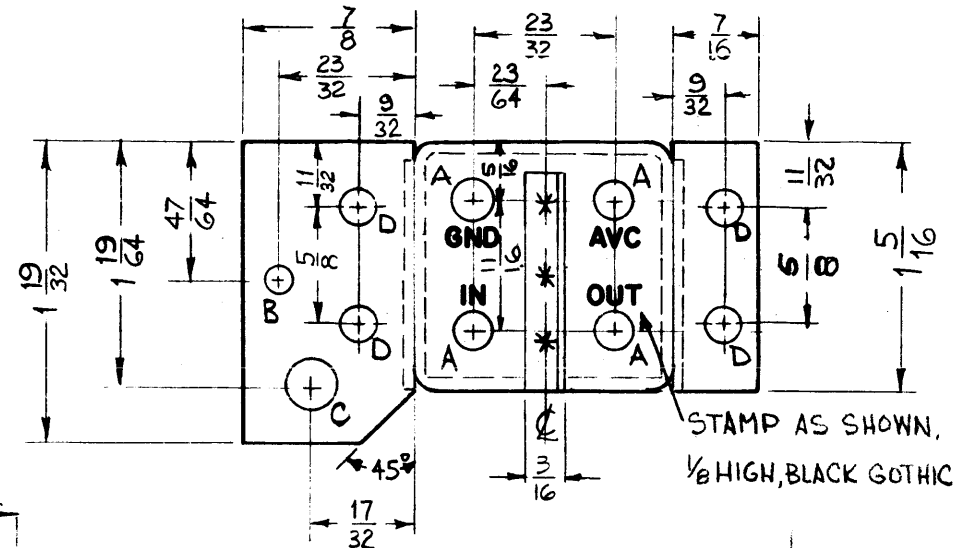
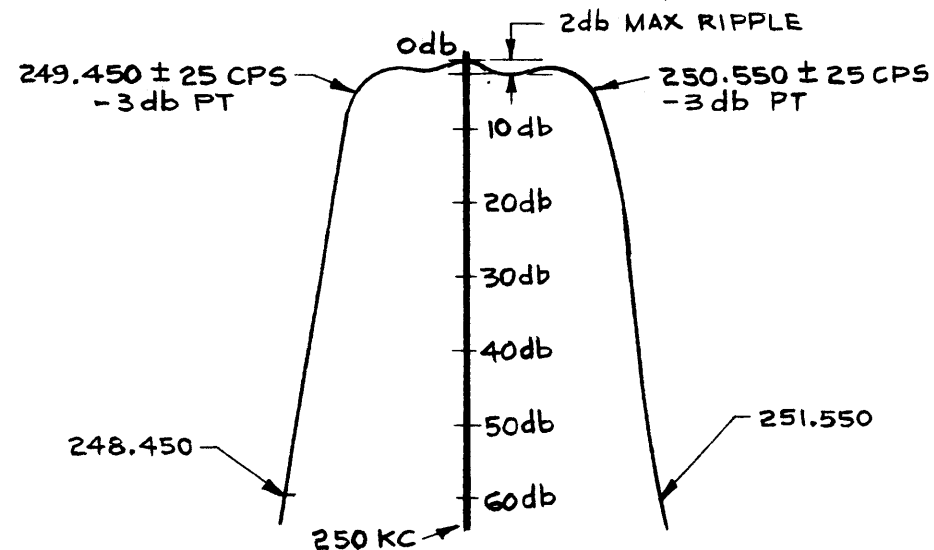
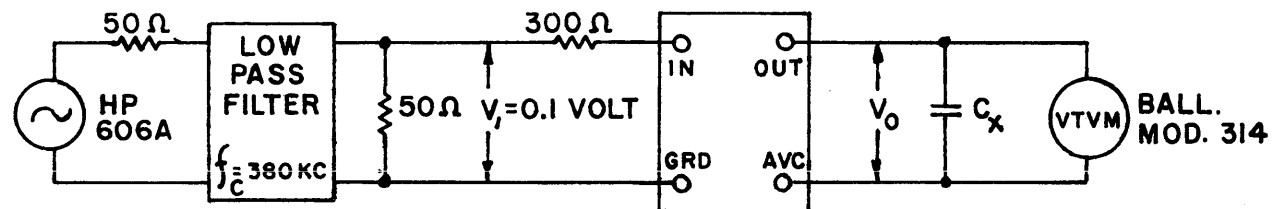
EX-175

THE CONTENTS OF THIS DRAWING ARE THE EXCLUSIVE PROPERTY OF THE TECHNICAL MATERIEL CORP. ITS UNAUTHORIZED USE OR REPRODUCTION IN WHOLE OR IN PART IS STRICTLY FORBIDDEN.

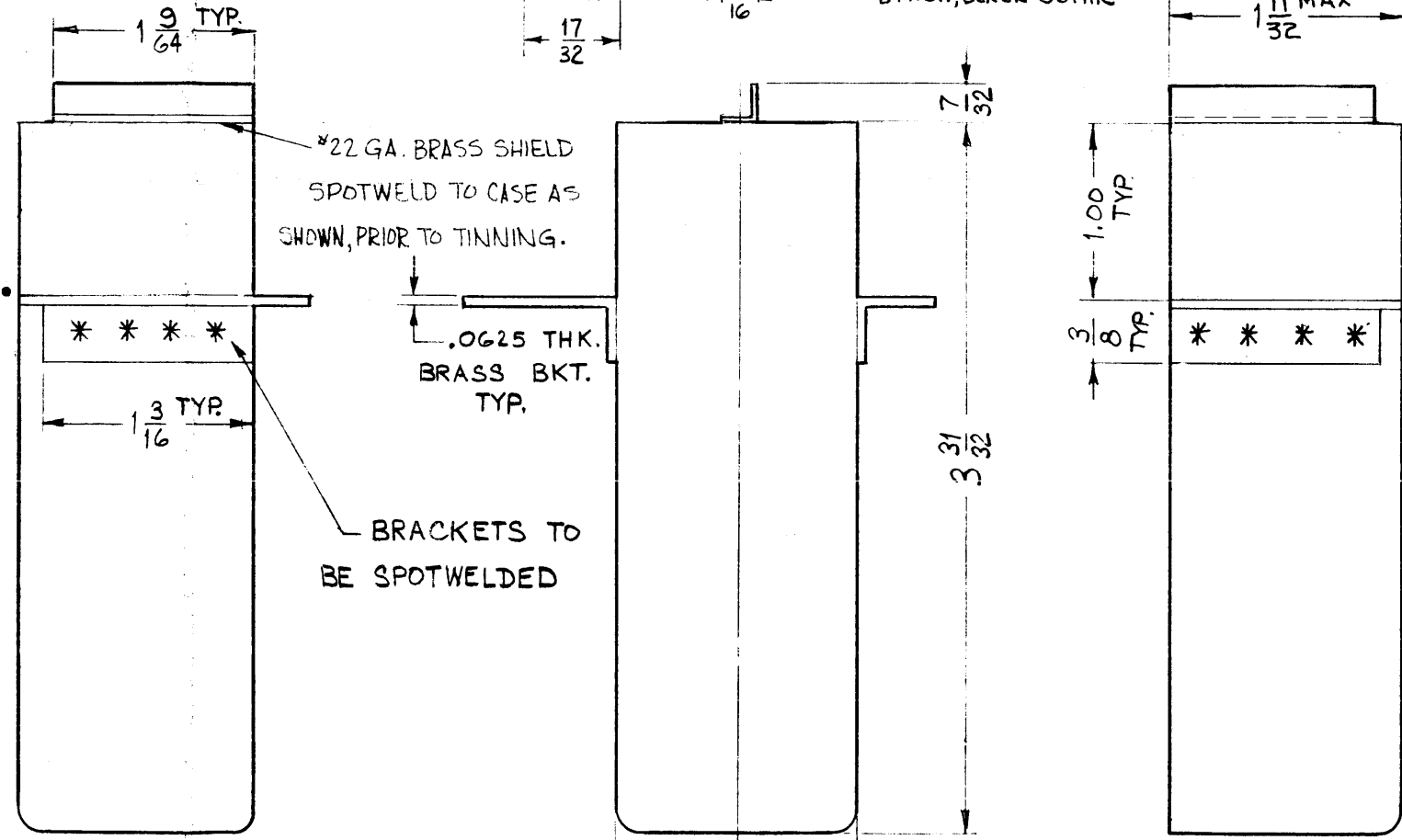
ELECTRICAL SPECIFICATIONS

1. TYPE: SYMMETRICAL.
2. db MEASUREMENTS: ALL db MEASUREMENTS ARE RELATIVE TO THE MAXIMUM SIGNAL RESPONSE IN PASSBAND.
3. CARRIER FREQUENCY: 250 KC.
4. -3 db POINTS: 249.450 KC +25 CPS, 250.550 KC +25 CPS.
5. -60 db POINTS: 248.450 KC OR GREATER, 251.550 KC OR LESS. ALL RETURN LOBES AND SPURIOUS SHALL BE -60 db OR GREATER, OVER THE RANGE +50 KC FROM CARRIER FREQUENCY.
6. MAXIMUM PASSBAND RIPPLE: 2 db.
7. INSERTION (LOSS OR GAIN): +14 db +2 db.
8. INPUT IMPEDANCE: 300 OHMS (NOMINAL).
9. OUTPUT IMPEDANCE: NOT TO EXCEED 50K OHMS (INTERNALLY TERMINATED).
10. D.C. RESISTANCE ACROSS OUTPUT: NOT TO EXCEED 5K OHMS.
11. TEMPERATURE RANGE: 0° TO 70° C.

SEE TEST PROCEDURE S-764. INSERTION (LOSS OR GAIN) = $\pm(V_0 - V_1)$ IN db.



- A - .209 DIA. 4 REQ.
- B - 5/32 DIA 1 "
- C - 9/32 DIA 1 "
- D - 3/16 DIA 4 "



STAMP AS SHOWN 1/8 HIGH BLACK GOTHIC.
FX-175E
1.0KC SYM

REQ.	ITEM	PART NO.	M. GELLMAN	DESCRIPTION	SYMBOL
			THE TECHNICAL MATERIEL CORP. MAMARONECK, NEW YORK		
		BRASS	FILTER, SYMMETRICAL CRYSTAL 1 KC		
		HOT TIN DIP	M.F.	Q.E.	J.P.
		TYPE & TEMPER	DRAWN	CHECKER	FINAL APPROVAL
		SI15 TMC SMOOTH GREY ENAMEL	R.P.L.	R.P.L.	FX-175
		FINISH & SPEC. NO.	ELEC. DES. APP.	MECH. DES. APP.	E

SYM	DESCRIPTION	DATE	CH. NO.	DRAFTS	CHECKER	ENG. APP.
	UNLESS OTHERWISE SPECIFIED:					
	DIM 1-11/32 MAX WAS 1-5/16 REF					
	"D" HOLES WERE 1/8 x 1/16 SLOTS					
	SPECS, TEST SCHEMATIC & PICT. REVISED					
	DIMENSIONS ARE IN INCHES					
	TOLERANCES ON					
	FRACTIONS ± 1/64 DECIMALS ± .005 ANGLES ± 1/2°					
	SCALE: DO NOT SCALE (S401-95)					
	MAXIMUM ALLOWABLE TOLERANCES HAVE BEEN DETERMINED AND ANY DEVIATIONS WILL BE CAUSE FOR REJECTION. REMOVE ALL BURRS AND SHARP EDGES					
	1 HFI-1					
	REQ. PER UNIT					
	MODEL					
	SECTION					
	ASS'Y. NO.					
	DATE					
	USED ON					