

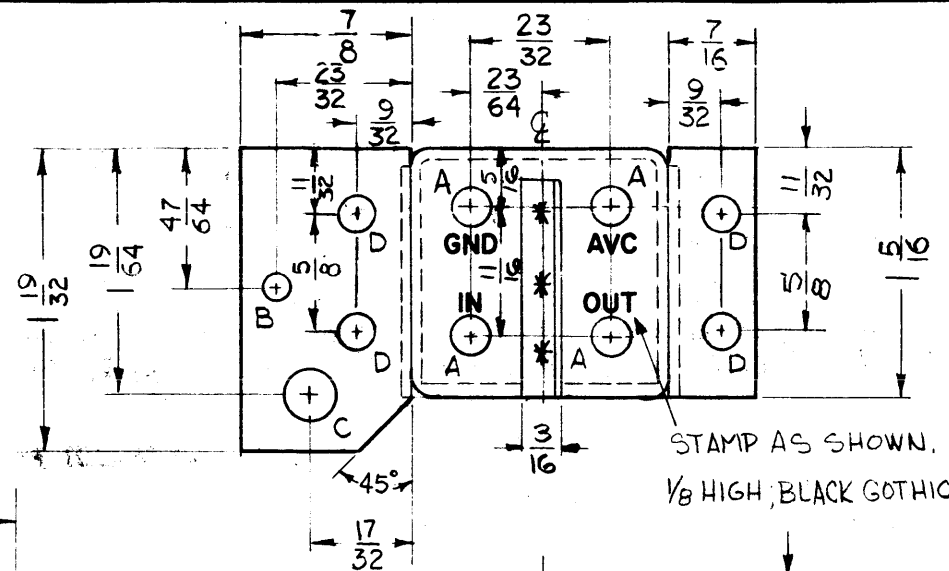
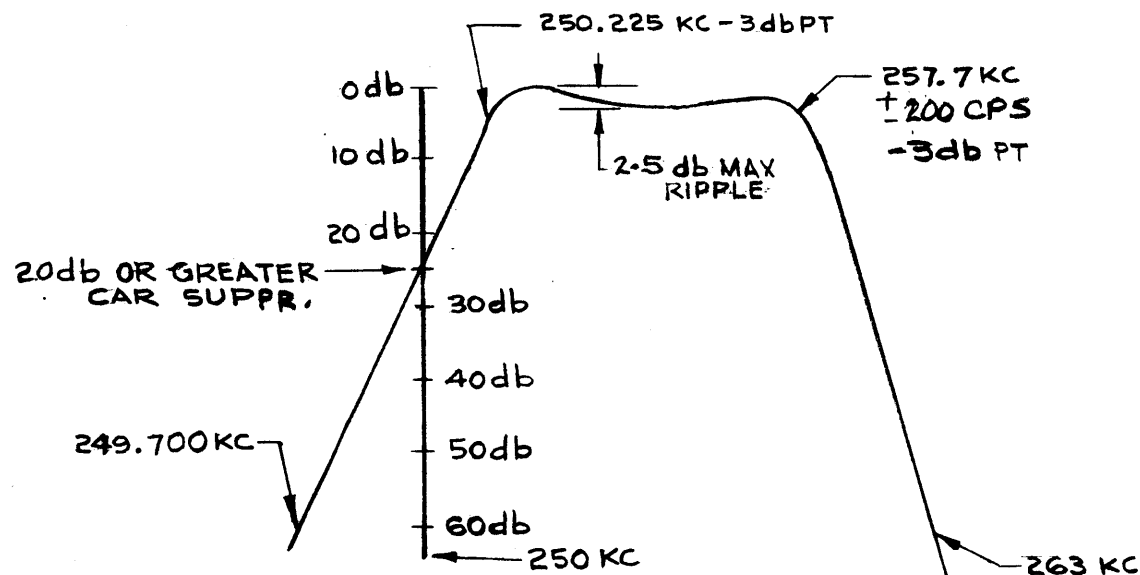
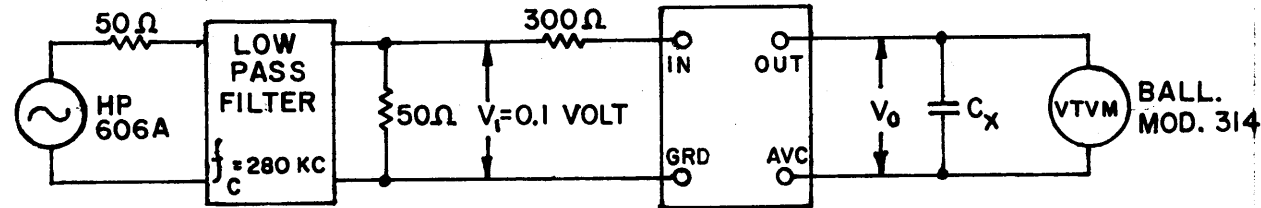
FX-172 L

THE CONTENTS OF THIS DRAWING ARE THE EXCLUSIVE PROPERTY OF THE TECHNICAL MATERIEL CORP. ITS UNAUTHORIZED USE OR REPRODUCTION IN WHOLE OR IN PART IS STRICTLY FORBIDDEN.

ELECTRICAL SPECIFICATIONS

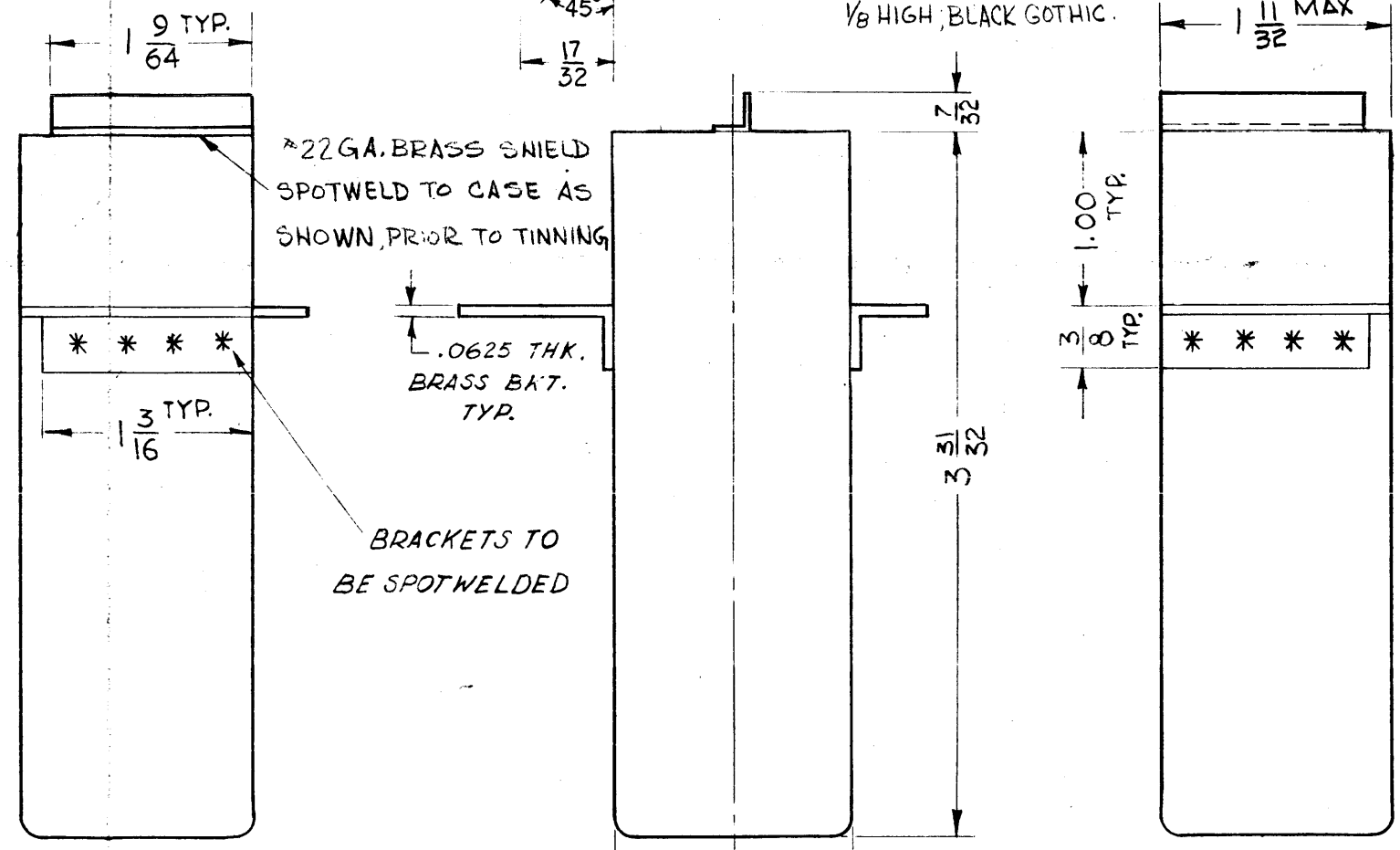
1. TYPE: UPPER SIDEBAND.
2. db MEASUREMENTS: ALL db MEASUREMENTS ARE RELATIVE TO MAXIMUM SIGNAL RESPONSE IN PASSBAND.
3. CARRIER FREQUENCY: 250 KC.
4. CARRIER SUPPRESSION: -20 db OR GREATER.
5. -3db POINTS: 250.225 KC OR LESS, 257.7 KC OR GREATER.
6. -60db POINTS: 249.700 KC OR GREATER, 263.0 KC OR LESS
ALL RETURN LOSSES AND SPURIOUS SHALL BE -60 db OR GREATER, OVER THE RANGE +50 KC FROM CARRIER FREQUENCY.
7. MAXIMUM PASSBAND RIPPLE 2.5 db
8. INSERTION (LOSS OR GAIN): +8 db +2db.
9. INPUT IMPEDANCE: 300 OHMS (NOMINAL).
10. OUTPUT IMPEDANCE: NOT TO EXCEED 300 OHMS (INTERNALLY TERMINATED).
11. D.C. RESISTANCE ACROSS OUTPUT: NOT TO EXCEED 5K OHMS.
12. TEMPERATURE RANGE: 0° TO 70° C.

SEE TEST PROCEDURE S-764. INSERTION (LOSS OR GAIN) = $20 \log(V_0/V_1)$ IN db.



- A ~ .209 DIA. 4 Req.
- B ~ 5/32 DIA. 1 "
- C ~ 9/32 DIA. 1 "
- D ~ 3/16 DIA. 4 "

STAMP AS SHOWN, 1/8 HIGH, BLACK GOTHIC.



FX-172-7.5KC USB

L	257.7 KC ± 200 CPS WAS 257.6 KC ± 100 CPS	2-16-68	18769	HG		EFM
K	ON ELEC. SPECS #5 WAS "± 100 CPS"	10-26-67	18570	HCA		OP
J	ADD "OR BRUSHED NICKEL" TO FINISH	8/24/66	16772	CEP		
H	SEE EMN #10975 FOR CHG.	22764	10975	A.M.		
SYM	DESCRIPTION	DATE	CH. NO.	DRAFTS	CHECKER	ENG. APP.

UNLESS OTHERWISE SPECIFIED:
 DIMENSIONS ARE IN INCHES
 TOLERANCES ON FRACTIONS ± 1/64 DECIMALS ± .005 ANGLES ± 1/20
 SCALE: DO NOT SCALE (5401-9.5)
 MAXIMUM ALLOWABLE TOLERANCES HAVE BEEN DETERMINED AND ANY DEVIATIONS WILL BE CAUSE FOR REJECTION.
 REMOVE ALL BURRS AND SHARP EDGES

REQ. PER UNIT	MODEL	SECTION	ASS'Y. NO.	DATE
1	HFI-1			9-9-61
1	SBS-1			9-9-61
USED ON				

REQ. ITEM	PART NO.	M. GELLMAN	DESCRIPTION	SYMBOL
		THE TECHNICAL MATERIEL CORP. MAMARONECK, NEW YORK		
STOCK SIZE		BRASS		
MATERIAL		HOT TIN DIP		
TYPE & TEMPER		SILS TMC SMOOTH GRAY ENAMEL OR BRUSHED NICKEL		
FINISH & SPEC. NO.		DRAWN	CHECKER	FINAL APPROVAL
		R.P.B.	R.P.B.	FX-172
		ELEC. DES. APP.	MECH. DES. APP.	L