

FX-170

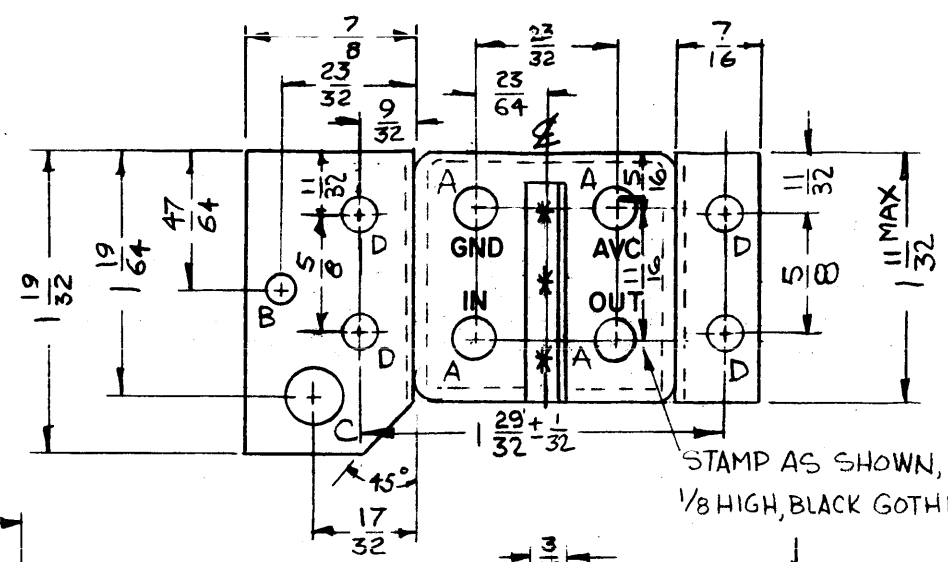
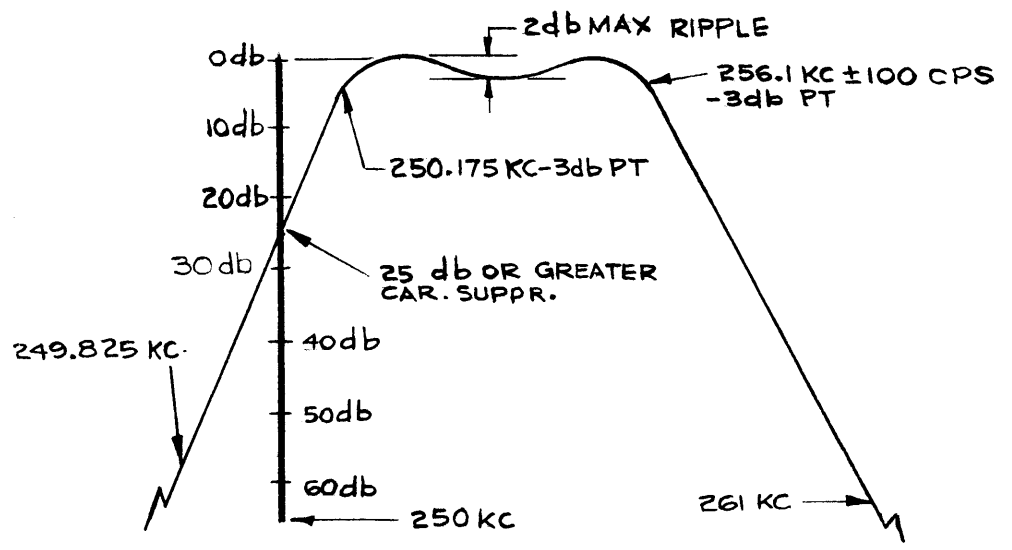
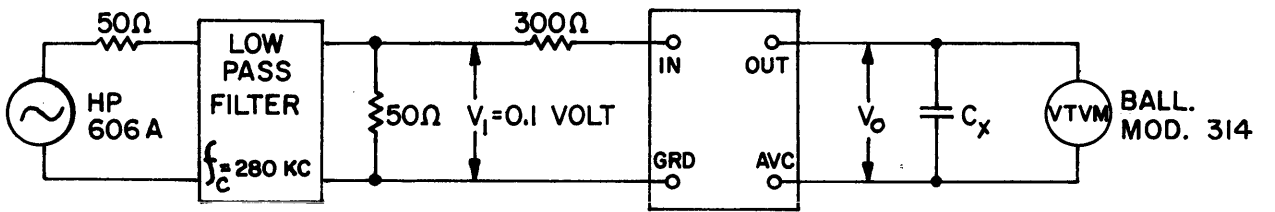
THE CONTENTS OF THIS DRAWING ARE THE EXCLUSIVE PROPERTY OF THE TECHNICAL MATERIEL CORP. ITS UNAUTHORIZED USE OR REPRODUCTION IN WHOLE OR IN PART IS STRICTLY FORBIDDEN.

STANDARD DWG.

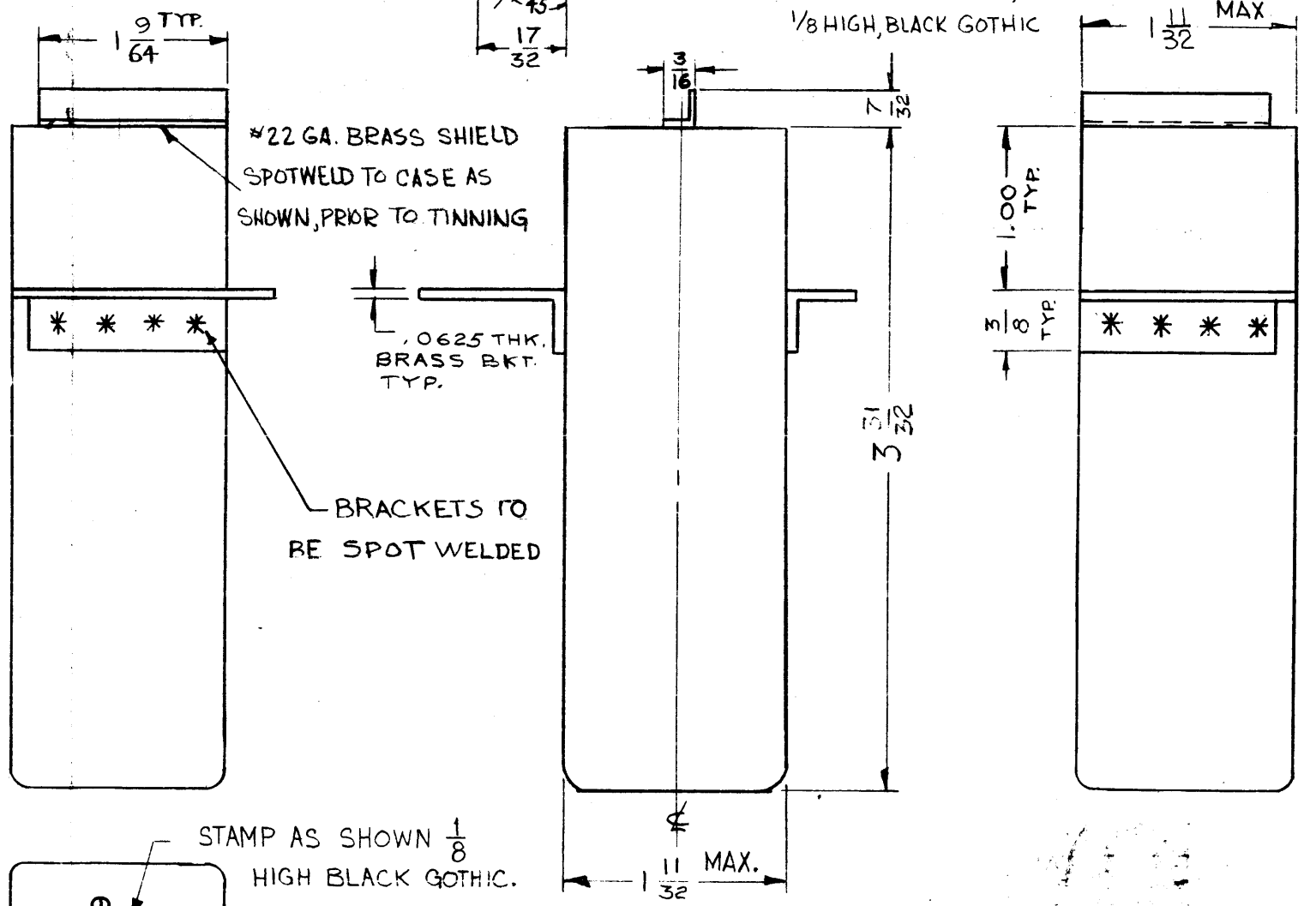
ELECTRICAL SPECIFICATIONS

1. TYPE: UPPER SIDEBAND
2. db MEASUREMENTS: ALL db MEASUREMENTS ARE RELATIVE TO MAXIMUM SIGNAL RESPONSE IN PASSBAND.
3. CARRIER FREQUENCY: 250 KC.
4. CARRIER SUPPRESSION: -25 db OR GREATER.
5. -3 db POINTS: 250.175 KC OR LESS, 256.1 KC +100CPS.
6. -60 db POINTS: 249.825 KC OR GREATER, 261.0 KC OR LESS; ALL RETURN LOBES AND SPURIOUS SHALL BE -60 DB OR GREATER, OVER THE RANGE OF +50KC FROM CARRIER FREQUENCY.
7. MAXIMUM PASSBAND RIPPLE: 2 DB
8. INSERTION (LOSS OR GAIN): +14 db +2 db
9. INPUT IMPEDANCE: 300 OHMS (NOMINAL).
10. OUTPUT IMPEDANCE: NOT TO EXCEED 50K OHMS (INTERNALLY TERMINATED).
11. D.C. RESISTANCE ACROSS OUTPUT: NOT TO EXCEED 5K OHMS.
12. TEMPERATURE RANGE: 0° TO 70° C.

SEE TEST PROCEDURE S-764. INSERTION (LOSS OR GAIN) = $-20 \log(V_0/V_1)$ IN DB.



- A - .209 DIA. 4 REQ
- B - 5/32 DIA. 1 "
- C - 9/32 DIA. 1 "
- D - 11/16 DIA. 4 "



FX-170-E
6.0KC USB

F	ONELEC. SPEC. #4 WAS ±50 CPS ON PICT. 129/32 DIM ADD, 11/32 WAS 15/16, 9/32 DEL	7.29.64	11981	WB	JCB	JC
E	DIM 11/32 MAX. WAS 17/16 REF. HOLES WERE 1/8 X 3/16 SLOTS. SPECS. TEST SCHEMATIC, PICTORIAL REVISES	C-28-63	9345		JCB	JCB
SYM	DESCRIPTION	DATE	CH. NO.	DRAFTS	CHECKER	ENG. APP.
UNLESS OTHERWISE SPECIFIED:		SCALE: DO NOT SCALE (5401-05)				
DIMENSIONS ARE IN INCHES		MAXIMUM ALLOWABLE TOLERANCES HAVE BEEN DETERMINED AND ANY DEVIATIONS WILL BE CAUSE FOR REJECTION. REMOVE ALL BURRS AND SHARP EDGES				
TOLERANCES ON FRACTIONS ± 1/64 DECIMALS ± .05 ANGLES ± 1/20		1	HFI-1			
REQ. PER UNIT	MODEL	SECTION	ASS'Y. NO.	DATE	USED ON	

REQ. ITEM	PART NO.	M. GELLMAN	DESCRIPTION	SYMBOL
STOCK SIZE		THE TECHNICAL MATERIEL CORP. MAMARONECK, NEW YORK		
BRASS		FILTER, ASYMMETRICAL CRYSTAL		
MATERIAL		6 KC UPPER SIDEBAND		
HOT TIN DIP		R. LODGE 8-9-61	AB	JCB
TYPE & TEMPER	HEAT TREAT. SPEC.	DRAWN	CHECKER	FINAL APPROVAL
S115 TMC SMOOTH GREY ENAMEL		R.P.L.	JCB	JCB
FINISH & SPEC. NO.		ELEC. DES. APP.	MECH. DES. APP.	FX-170 F