

FX-160

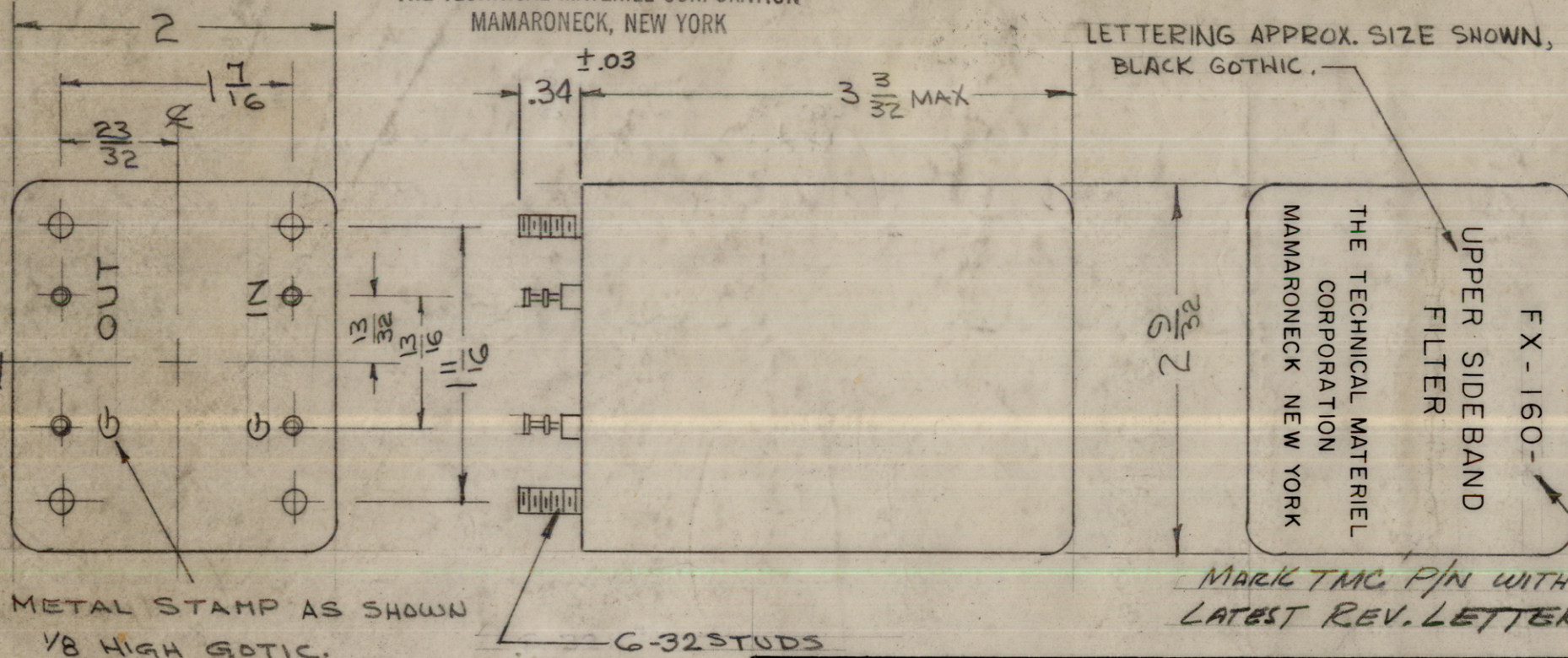
NOTICE TO PERSONS RECEIVING THIS DRAWING

THE TECHNICAL MATERIEL CORPORATION claims proprietary right in the material disclosed hereon. This drawing is issued in confidence for engineering information only and may not be reproduced or used to manufacture anything shown hereon without permission from THE TECHNICAL MATERIEL CORPORATION to the user. This drawing is loaned for mutual assistance and is subject to recall at any time.

Property of:

THE TECHNICAL MATERIEL CORPORATION
MAMARONECK, NEW YORK

LETTERING APPROX. SIZE SHOWN,
BLACK GOTHIC.



ELECTRICAL SPECIFICATIONS

TYPE: UPPER SIDEBAND

CARRIER FREQUENCY: 250 KC
CARRIER SUPPRESSION: -20 db or greater
-2db POINTS: NOT MORE THAN 250.250 KC, 258.500 KC \pm 500 CPS

TRAILING SLOPE: -40 db or more at 266 KC.

UNWANTED SIDEBAND ATTENUATION: GREATER THAN -60db FOR
FREQUENCIES LESS THAN 249.600 KC INCLUDING
ALL RETURN LOBES AND SPURIOUS

MAXIMUM PASSBAND RIPPLE: 2 db

INSERTION LOSS: -7db \pm 2db (SEE SCHEMATIC BELOW FOR
MEASURING FILTER LOSS)

INPUT IMPEDANCE: 10,000 OHMS UNBALANCED

OUTPUT IMPEDANCE: 10,000 OHMS UNBALANCED

TEMPERATURE RANGE: - 0° TO +70° C.

MECHANICAL SPECIFICATION:

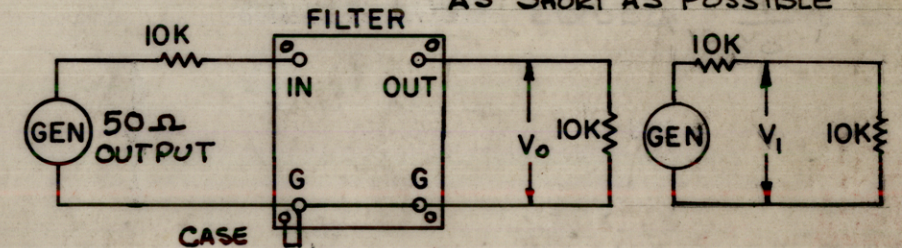
CASE: STEEL

FINISH: TMC Gray (S-115) Or Brushed Nickel
NOTE: Terminal End Unpainted

MOUNTING: 6-32 Studs (4 req.)

TERMINAL: Double End Pin Type, Brass, Silver Plated, GLASS OR
Teflon Insulated

ALL TEST LEADS TO BE
AS SHORT AS POSSIBLE



INSERTION (LOSS OR GAIN) = $\pm(V_1 - V_0)$ IN DB



K	LGTH. OF STUDS WAS 3/8	7-3-67	18343	AK	AK	AK
J	"GLASS OR" ADD. MECH. SP.	9-30-66	16923	AK	AK	AK
H	ON PERF. CURVE MAX. RIPPLE WAS 3db	6-9-66	16365	AK	AK	AK
G	ELEC. MECH. SPECS & SCHEMATIC REVISED	2-1-66	15602	HLA	AK	AK
F	1 CLERICAL CHANGE	14-3/16	CC	AK	AK	AK
E	1 IN ELEC. SPECS, INSERTION LOSS WAS -7db \pm 2db	8-14-63	9746	AK	AK	AK
D	1 TEST SCHEM. SPECS REVISED	6-20-63	9396	AK	AK	AK
C	1 3-3/32 DIM WAS 3-1/16	2-4-63	9168	AK	AK	AK
B	1 CHART SPECS CLARIFIED	4-23-63	8848	AK	AK	AK
A	3 SCHEMATIC ADDED	2-	8353	AK	AK	AK
	2 PERFORMANCE CHART ADDED	26-				
	1 ELEC. SPECS. CLARIFIED	63				

TOLERANCES		SCALE:		REQ. PER UNIT	
DEC. DIM. \pm		MAXIMUM ALLOWABLE TOLERANCES HAVE BEEN DETERMINED AND ANY DEVIATIONS WILL BE CAUSE FOR REJECTION: REMOVE ALL BURRS AND SHARP EDGES		1	
FRAC. DIM. \pm				SBE-3,9	
ANGULAR DIM. \pm				AX-205	
				7-8-59	
				USED ON	

REQ. ITEM	PART NO.	DESCRIPTION	SYMBOL
THE TECHNICAL MATERIEL CORP. MAMARONECK, NEW YORK			
STOCK SIZE			
UPPER SIDEBAND FILTER BANDPASS			
MATERIAL			
TYPE & TEMPER		HEATTREAT. SPEC.	DRAWN
			AKB
FINISH & SPEC. NO.		ELEC. DES. APP	MECH. DES. APP
		RWR	RWR
		FX-160 K	